



2017/18

WORKWEAR | OUTDOOR | SAFETYSHOES





ALBATROS® is one of the leading German brands in the sector of performance safety footwear as well as work & outdoor fashion. All ALBATROS® products are designed and developed by an international team of PPE experts in Germany - and are „powered by function.

For over 35 years ALBATROS® constantly improves quality, comfort, functionality and design of their products supporting professionals to successfully master their work. ALBATROS® products make the world of work safer and ensure a convincing and self-assured appearance.

ALBATROS® - powered by function -
for real professionals.





CONTENT

WORK & OUTDOOR FASHION

JACKETS	8 - 13
SOFTSHELL	14 - 17
KNITTED-/FLEECE	18 - 20
FLEECE	21 - 24
VESTS	25 - 27
KNITWEAR & SWEATSHIRTS	28 - 29
HUNTING	30 - 31
SHIRTS	32 - 37
TROUSERS & JEANS	38 - 39

WORKWEAR

OVERVIEW	42 - 43
PROFI LINE	44 - 45
ALLROUND GREEN	46 - 47
ALLROUND BLACK	48 - 49
FREESTYLE SR	50 - 51

RAINWEAR

AQUALOCK	54 - 60
OTHER	61

ACCESSORIES

THERMIC UNDERWEAR	64
GLOVES	65
KNITTED CAPS	66 - 67
HATS & CAPS	68 - 69
SOCKS	70 - 71

SAFETY SHOES EN ISO 20345

OVERVIEW	74 - 77
LADIES LINE	78 - 80
DUAL IMPULSE	81 - 84
SPORT XTS	85 - 89
FREESTYLE SR	90 - 92
CASUAL SAFETY	93 - 95
PROFI LINE CSL	96 - 98
CRAFT ^{HD}	99 - 102
CLEAR TPU	103 - 105
X-TREME	106 - 107
RIGGER BOOT	108 - 109
TREKSTAR WORK	110 - 113
FOOTGUARD	114 - 115

WORK & HIKE EN ISO 20347

TREKKING

OVERVIEW	118 - 120
WORK & HIKE LDS	122 - 123
WORK & HIKE XTS	124 - 128
HIKER PRO	129 - 131
MULTITREK	132 - 135

BOOTS

OVERVIEW	138 - 139
SAFETY <small>EN ISO 20345</small>	140 - 141
OCCUPATIONAL <small>EN ISO 20347</small>	142 - 143
NATURAL RUBBER	144 - 147
ANKLE BOOTS & CLOGS	148 - 149

GLOSSARY	150 - 159
INDEX	160 - 163

POWERED BY FUNCTION - MORE THAN EMPTY WORDS!

TESTED IN LABORATORY - PROVEN IN PRACTICE!

2

INNOVATIVE TECHNOLOGY AS A BENCHMARK

Innovative technologies and high quality materials in combination with our long years of experience serve as a basis for the production of our ALBATROS® products.

An international team of experts for PSA (Personal Safety Equipment) accompanies actively the manufacturing and production of our products and with our internal ALBATROS® KVP-programme (guide for continuous improvement processes) it counts on the application of most modern management of production.

Our product development and product management staff work closely with research centres and universities to ensure the quality, performance-focused protective function and premium materials.

Designed and developed in Germany.

MAXIMUM QUALITY STANDARDS AS A SERVICE COMMITMENT

The success of ALBATROS® products is based on seamless quality management. Our quality team continually tracks the development process of ALBATROS® products. From the material selection via manufacturing processes to delivery quality. Inspections and audits in our premises as well as at our partners ensure sustainable product and production improvements.

Training in accordance with international standards guarantees the constant optimisation of inspections, both at the production site and at our headquarter in Lippstadt.

All our products shall be checked externally in recognized testing institutes as well as in the company's own lab with regard to the compliance with safety and quality features.

We won't accept any compromises!

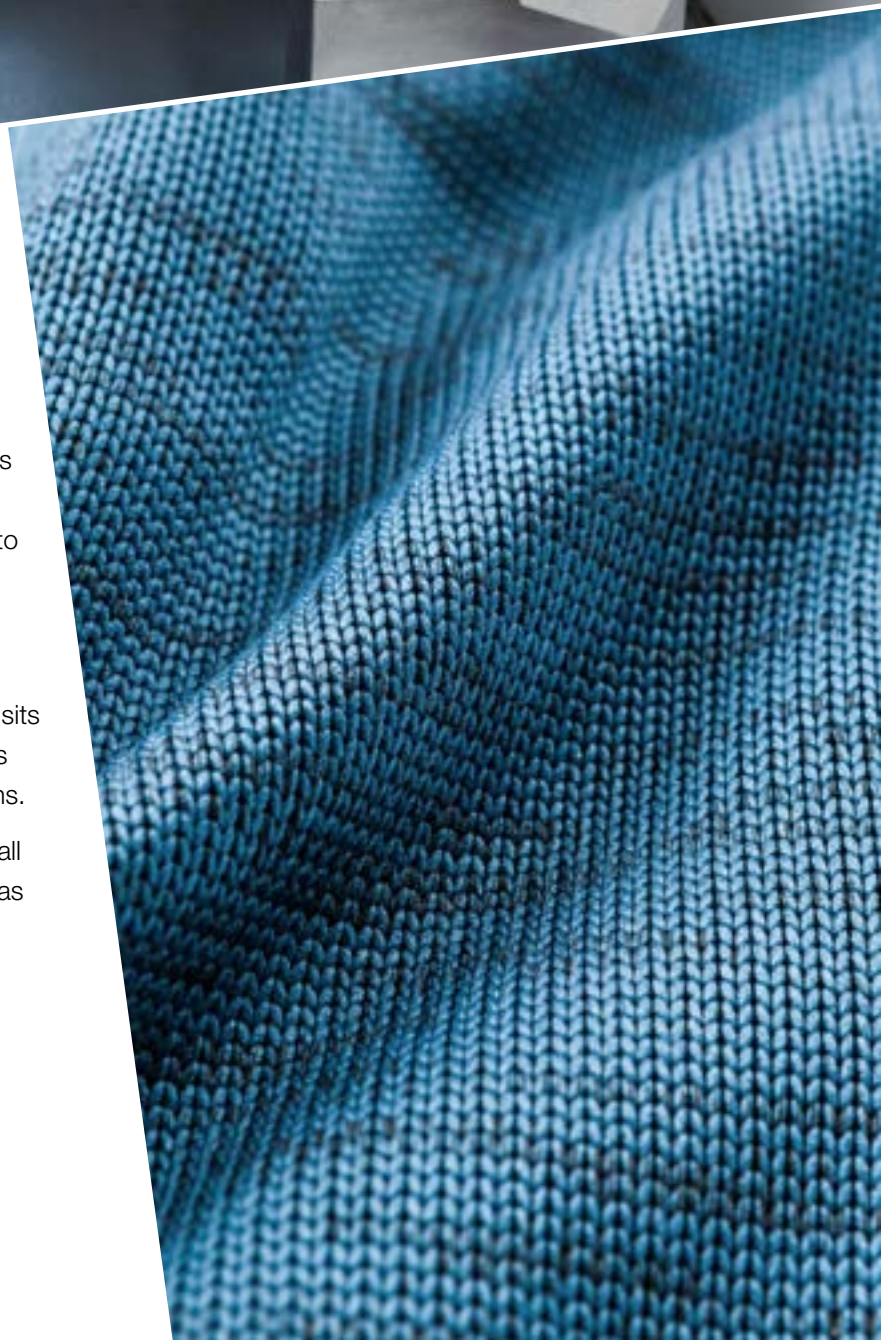


DESIGN - POWERED BY FUNCTION

We design and develop our ALBATROS® products according to the needs of their wearer. The concepts for safety shoes, workwear and outdoor equipment arise not only in Germany but worldwide according to our instructions.

Proposals for new products are centrally combined, and only the best ideas make it onto the shelves of ALBATROS® specialist retailers. Suggestions from visits to exhibitions, trade conferences and design tenders complete the pool of new opportunities and creations.

Design follows function - according to this principle all features of a product are tailored. Because quality has long been a central issue for us and follows the high standard of our customers.



WE TAKE RESPONSIBILITY! FOR PEOPLE AND THE ENVIRONMENT

BEING ENVIRONMENTALLY CONSCIOUS!

German companies are amongst the most innovative and competitive in the world. This is mainly the result of modern technology, high quality standards and unique specialisation.

However, „designed & developed in Germany“ is more: It stands for companies characterised by social justice, environmental responsibility and economic success. This is beneficial not only to the individual company because it motivates staff and consumers. Responsible management also strengthens our company overall and promotes the development in other countries.

As a family-owned company in its third generation, a healthy balance between social justice and ecological as well as economic success has now been an integral part of our corporate culture for more than 85 years. We have a long-term outlook and do not intend to conduct our business at the expense of tomorrow.

TRUST IS GOOD - CONTROL IS BETTER

Fair labour and social standards should not be a luxury that only rich countries can afford. Human work conditions and sustainable production must be requirements applied across the world. Therefore, we check and certify our production sites continuously in order to ensure together with our partners a responsible supply chain management.

SUSTAINABLE USAGE

For our brand ALBATROS® our ISM team works continually on the optimisation of our value-added activities - with the aim of preventing unnecessary burdens on human beings and nature.

Because we want to leave our children a world which is worth living and where a fair working environment and a clean environment are no empty promises.

We can lay down the tracks for a more social, more sustainable and better world - and fully accept this responsibility!

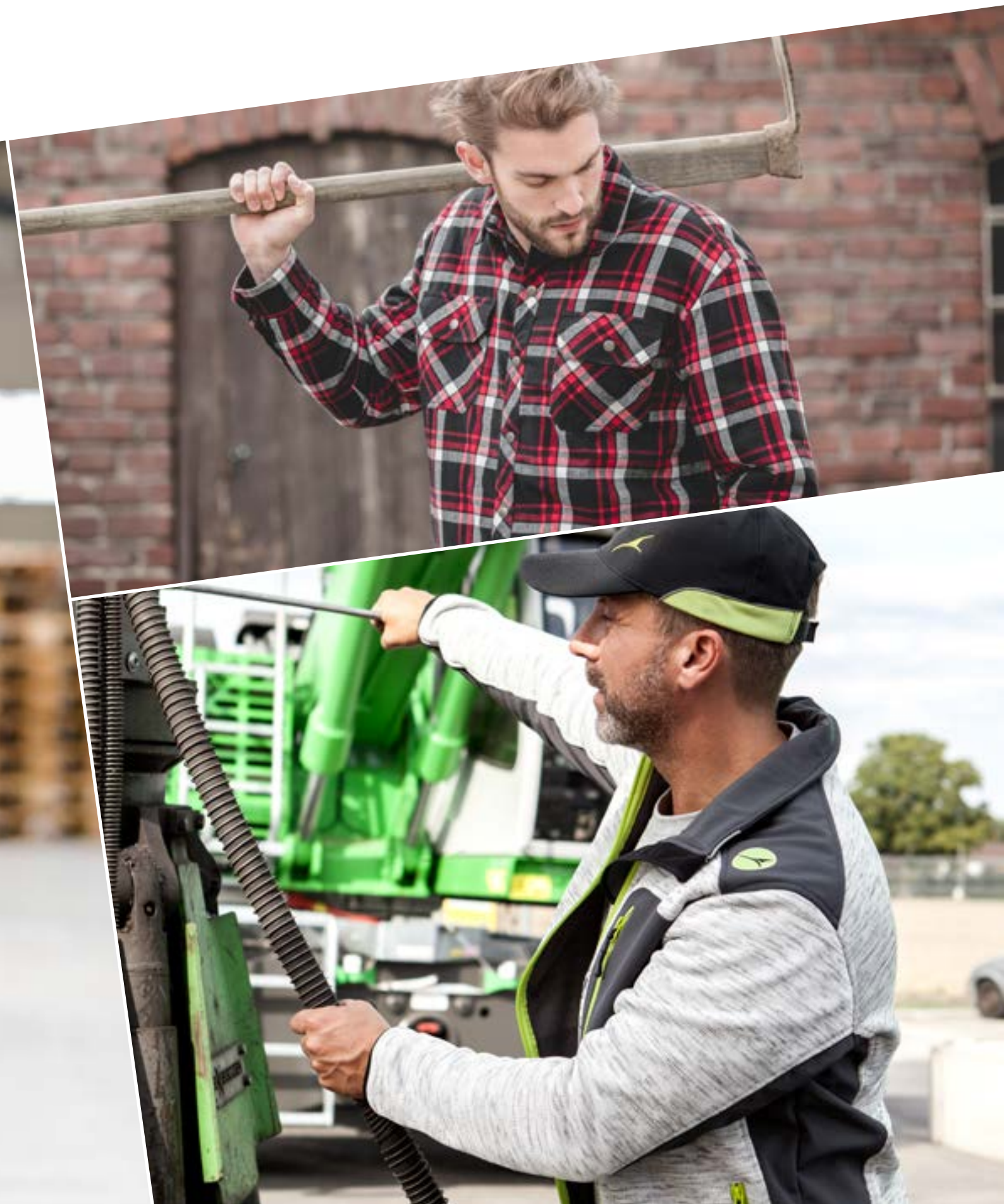


WORK & OUTDOOR FASHION

AS VARIED AS YOUR LIFE!

ALBATROS® competently links the demands of the working environment with the innovations of new outdoor functional clothing.







CELSIUS // WORKER PARKA

Art. No. 27.092.0

- material polyester Oxford, 600 D, PU coated
- normal fit
- wind- and waterproof, hood inside collar
- reflective stripe for better visibility
- two chest pockets and sleeve pocket with flap and velcro
- chest pocket with waterproof zipper
- two slit pockets with zipper at the sides
- pocket inside with velcro
- covered two-way zipper
- adjustable cuffs with velcro
- thickly fleece lining in the back area
- customisable by an opening in the lining in the back area

Material: 100% polyester **Coating:** 100% polyurethane

Lining: 100% polyester **Padding:** 100% polyamide

Colours: blue-black (351), grey-black (808)

Sizes: S - 4XL



NEWTON // WORKER PARKA

Art. No. 27.045.0

- material polyester Oxford, 600 D, PU coated
- normal fit
- wind- and waterproof
- removable hood
- reflecting stripes on the back for better visibility
- patch two-way pocket
- sleeve pocket with flap and additional zipper pocket
- pocket inside with velcro
- covered front zipper
- adjustable cuffs with velcro
- warm lining

Material: 100% polyester **Coating:** 100% polyurethane

Lining: 100% polyamide **Padding:** 100% polyester

Colour: black-grey (202)

Sizes: S - 4XL



IMPULS // JACKET

Art. No. 27.070.0

- material polyester Oxford, 600 D, PU coated
- comfortable fit
- wind- and waterproof
- reflective stripe for better visibility
- innovative smartphone Pocket with SMARTLIFTER function
- waterproof zipper on the left chest pocket
- many functional pockets outside and inside
- covered front zipper
- adjustable cuffs with velcro
- striking fleece lining in the back area
- customisable by an opening in the lining in the back area
- high-quality logo embroidery

Material: 100% polyester **Coating:** 100% polyurethane

Lining: 100% polyester **Padding:** 100% polyester

Colour: black (200)

Sizes: S - 4XL



removable
sleeves



AMPERE // PILOT JACKET 2 IN 1

Art. No. 27.093.0

- material hard wearing polyester Oxford, 600D, PU coated, comfortable fit
- wind- and waterproof through welded seams
- can also be used as a vest due to removable sleeves
- reflecting stripes on the back for better visibility
- rolled-up hood inside collar, fleece lining inside collar
- chest pocket with waterproof zipper
- two slit pockets with zipper at the sides
- adjustable cuffs with velcro
- comfortable elastic waistband for optimal adjustment
- all season lining with comfortable padding
- customisable by an opening in the lining in the back area

Material: 100% polyester **Coating:** 100% polyurethane

Lining: 100% polyamide **Padding:** 100% polyester

Colour: black (200)

Sizes: S - 4XL



PROFI LINE // BLOUSON JACKET

Art. No. 28.634.0

- material polyester Oxford, 600 D, PU coated
- wind- and waterproof, comfortable fit, rolled-up hood inside collar
- reflective stripe for better visibility
- two chest pockets with flap and velcro, Pen pocket on sleeve
- two large side pockets with zipper
- inside pocket with pass-through for headphone cord, covered front zipper
- adjustable cuffs with velcro
- customisable by an opening in the lining in the back area

Material: 100% polyester **Coating:** 100% polyurethane

Lining: 100% polyester **Padding:** 100% polyester

Colour: blue-royal (335)

Sizes: XS - 4XL | 46 - 60

More details p. 45





quilted, red lining
with mobile pocket



FREESTYLE SR // JACKET

Art. No. 27.043.0

- material polyester Oxford, 600 D, PU coated, modern fit
- wind- and waterrepellent, rolled-up hood inside collar
- two chest pockets with flap and velcro
- patch mobile phone pocket and zip pocket
- sleeve pocket with flap and additional pen pocket
- two slit pockets with zipper at the sides
- covered front zipper
- adjustable sleeve cuffs and jacket seam with velcro
- two coloured all season lining with comfortable padding
- customisable by an opening in the lining in the back area
- high-quality logo embroidery

Material: 100% polyester **Coating:** 100% polyurethane

Lining: 100% polyester **Padding:** 100% polyester

Colour: grey (800)

Sizes: XS - 3XL



GRAY // PILOT JACKET

Art. No. 27.099.0

- material polyester Oxford, PU coated
- comfortable fit
- wind- and waterrepellent
- reflecting stripes for better visibility
- two-way flap pockets
- patch chest pocket with extra zipper pocket
- two inside pockets with velcro
- covered front zipper
- adjustable cuffs with velcro and knitted cuff
- warm lining

Material: 100% polyester **Coating:** 100% polyurethane

Lining: 100% polyamide **Padding:** 100% polyester

Colour: grey-black (808)

Sizes: S - 3XL



removable
quilted jacket



LUX // HIGH VISIBILITY PARKA 2 IN 1

Art. No. 27.206.0

- material polyester Oxford, PU coated, comfortable fit
- wind- and waterproof, hood inside collar
- 3M™ Scotchlite™ reflecting stripes for better visibility
- patch flap pockets
- chest pocket with an extra zipper pocket
- covered two-way front zipper
- adjustable sleeve cuffs with press button and knitted waistband
- removable quilted jacketlining

Material: 100% polyester **Coating:** 100% polyurethane

Lining: 100% polyamide **Padding:** 100% polyester

Colour: orange (994)

Sizes: S - 3XL

**NEW
STYLE**



available from **MID SEPTEMBER**



ATMOSPHERE // PU-STRETCH RAIN JACKET

Art. No. 27.485.0

- flexible, durable stretch material, PU coated, 170 g/m²
- elastic with high tenacity even at subzero temperatures
- longer fit
- wind- and waterproof, 8.000 mm water column
- waterproof welded seams and zippers
- reflective stripe for better visibility
- removable, adjustable hood with light microfleece lining
- chest pocket with zipper
- two slit pockets with zipper at the sides, covered front zipper with wind protection border, additionally closable with velcro
- comfortable neoprene-cuffs
- elastic hem
- microfleece lining with comfortable padding
- smooth sleeve lining for comfortable put on and take off
- discreet, reflecting logo print

Material: 100% polyester **Coating:** 100% polyurethane

Lining: 100% polyester **Padding:** 100% polyester

Colour: black (200)

Sizes: S - 4XL



PASCAL // RAIN COAT

Art. No. 27.476.0

- material polyamide taslan fabric, PU coated
- normal fit
- wind- and waterproof, 4.000 mm water column
- removable and adjustable hood
- side pockets
- waterproof chest pocket and sleeve pocket with zipper
- waterproof front zipper
- adjustable cuffs with velcro
- comfortable net lining in contrasting colour red

Material: 100% polyester **Coating:** 100% polyurethane

Lining: 100% polyamide

Colour: grey-black (808)

Sizes: S - 4XL



DELISLE // RAIN COAT

Art. No. 27.475.0

- material polyamide taslan fabric, PU coated
- normal fit
- wind- and waterproof, 4.000 mm water column
- adjustable hood
- waterproof side pockets with zipper
- waterproof chest pocket with welded zipper
- waterproof, welded front zipper
- adjustable cuffs with velcro
- comfortable net lining in contrasting colour red

Material: 100% polyester **Coating:** 100% polyurethane

Lining: 100% polyamide

Colour: blue-black (351)

Sizes: S - 4XL

SUMMER AND WINTER

THE ALLROUND-TALENT - FROM WINTER JACKET TO SUMMER VEST.

Thanks to its 4 in 1 concept, the allrounder fits individually to your desires. It quickly changes from the padded winter jacket with cuddly fleece collar for the extra portion of warmth into a light summer vest.

4ⁱⁿ1



ALLROUNDER // PILOT JACKET 4 IN 1

Art. No. 27.200.0

- material extremely robust Beaver nylon, 280 g/m²
- comfortable fit
- wind- and waterrepellent
- can also be used as a vest due to removable sleeves
- removable, rolled-up hood inside collar
- comfortable soft fleece-lining inside collar
- sleeve pocket with zipper
- two chest pockets with flap and press button as well as extra zipper pocket
- two hand pockets
- two pockets inside
- two-way front zipper
- comfortable knitted cuffs on sleeves and hem

Material: 60% cotton, 40% polyester

Fleece: 100% polyester **Lining:** 100% polyester

Colours: black (200), black-grey (202), black-green (205), blue-royal (335), green-orange (690)

Sizes: S - 4XL



removable
sleeves

removable and
rolled-up hood

waterrepellent
shell

removable
fleece lining

can easily be
changed into a
light vest



two-way front zipper

(335)



(690)



(205)



(202)

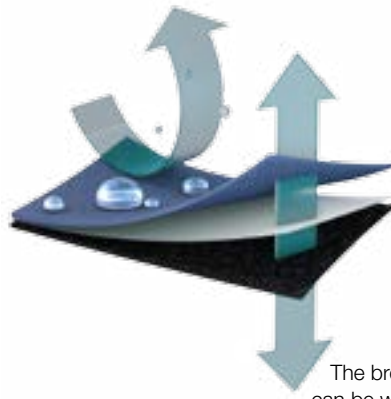


(200)



SOFTSHELL

Softshell jackets are real all-round talents. They keep off the rain, protect against wind and are at the same time breathable, comfortable and insensitive. The 3-layered softshell laminate is windproof, waterproof and breathable. A high freedom of movement guarantees the high elasticity.



WINDPROOF



The laminate layers produce a windrepelling effect.

WATERPROOF



Moisture easily runs off the smooth surface so that the fabric does not become saturated quickly.

BREATHABLE



The breathable fabric ensures that perspiration can be wicked away from the body and escapes easily from the surface.



ASCARI FTX // FUNCTIONAL JACKET

Art. No. 26.452.0

- 3-layered softshell material with fleece inside, 350g/m²
- wind- and waterrepellent, 8.000 mm water column
- normal fit, prolonged back
- reflective stripe for better visibility
- two chest pockets with flap and press button, pocket inside with velcro
- two slit pockets with zipper at the sides
- full-length front zipper with chin protection and wind protection border
- adjustable sleeve cuffs with velcro
- cuffs with thumb loop inside, perfect for working above the head
- all season lining with comfortable padding
- the integrated snowcatcher detains the wind and keeps moisture out, ideal for climate regulations

Material: 96% polyester, 4% elasthane

Lining and Padding: 100% polyester

Colour: black-grey (202)

Sizes: S - 4XL



HAWKING // SOFTSHELL JACKET

Art. No. 26.406.0

- 3-layered softshell Ripstop with microfleece inside
- wind- and waterrepellent, breathable, 8.000 mm water column
- normal fit
- removable hood
- waterproof chest pocket with zipper
- two hand pockets
- covered front zipper with chin protection and wind protection border
- adjustable cuffs with velcro
- prolonged back
- adjustable, elastic jacket seam

Material: 94% polyester, 6% elastane

Colour: anthracite (806)

Sizes: S, L - 3XL



LINDBERGH // SOFTSHELL JACKET

Art. No. 26.438.0

- 3-layered softshell material with microfleece inside
- wind- and waterrepellent, breathable, 8.000 mm water column
- normal fit
- reflective stripe for better visibility
- high closable collar
- chest pocket with waterproof zipper
- two slit pockets with zipper at the sides
- full-length front zipper with chin protection and wind protection border
- adjustable cuffs with velcro
- adjustable, elastic hem

Material: 96% polyester, 4% elastane

Colour: grey-black (808)

Sizes: S - 4XL



CORDURA

WRIGHT // SOFTSHELL JACKET

Art. No. 26.405.0

- 3-layered softshell material with microfleece inside
- wind- and waterrepellent, breathable, 8.000 mm water column
- normal fit
- removable hood
- waterproof chest pocket with zipper
- two waterproof slide-in side pockets with zipper
- waterproof front zipper with chin protection and wind protection border
- adjustable cuffs with velcro
- Cordura® patches on sleeves, prolonged back
- front section with light net lining
- adjustable, elastic jacket seam

Material: 94% polyester, 6% elastane **Lining:** 100% polyamide

Colour: olive-black (667)

Sizes: S - 4XL

**NEW
STYLE**

DAY / NIGHT

In the softshell included **reflex pearls** with high shining power improve the visibility in the darkness.

chest pocket
with zipper

adjustable sleeve
cuffs with velcro

adjustable, elastic
seam

reflective
print

available from **MID SEPTEMBER**



AVERY // SOFTSHELL JACKET

Art. No. 26.463.0

- 3-layered softshell material with fleece inside
- high-reflective softshell material
- normal fit
- wind- and waterrepellent
- 8.000 mm water column
- full-length front zipper with chin protection and wind protection border
- chest pocket with zipper
- two slit pockets with zipper at the sides
- adjustable cuffs with velcro
- adjustable, elastic hem

Material: 96% polyester, 4% elasthane

Colour: black-grey (202)

Sizes: S - 3XL





ALLROUND GREEN // SOFTSHELL JACKET

Art. No. 26.435.0

- 3-layered softshell material with microfleece inside
- wind- and waterrepellent, breathable, 8.000 mm water column
- normal fit
- high-closable, adjustable hood
- chest pocket with zipper
- two slit pockets with zipper at the sides
- full-length front zipper with chin protection and wind protection border
- adjustable cuffs with velcro
- high-quality logo embroidery in contrasting colour

Material: 96% polyester, 4% elasthane

Colour: black-green (205)

Sizes: XS - 3XL



KEPLER // SOFTSHELL JACKET

Art. No. 26.371.0

- 3-layered softshell material with microfleece inside
- wind- and waterrepellent, breathable, 8.000 mm water column
- normal fit
- high-closable collar
- chest pocket with zipper
- two slit pockets with zipper at the sides
- full-length front zipper with chin protection and wind protection border
- underarm ventilation with zipper
- elastic cuffs
- adjustable, elastic hem

Material: 96% polyester, 4% elasthane

Colours: black (200), blue (300)

Sizes: S - 3XL



HEYERDAHL // SOFTSHELL JACKET

Art. No. 26.422.0

- 3-layered softshell material with microfleece inside, 320 g/m²
- wind- and waterrepellent, breathable, 8.000 mm water column
- normal fit
- high-closable collar
- chest pocket with zipper
- two slit pockets with zipper at the sides
- full-length front zipper with chin protection and wind protection border
- adjustable cuffs with velcro

Material: 96% polyester, 4% elasthane

Colours: grey-black (808), blue-black (351)

Sizes: S - 3XL



KNIT-/ FLEECE

Knit fleece is the perfect combination of functionality, softness and urban look! The outside looks like a cardigan, while the softly roughened inside made of fleece offers an efficient heat insulation and optimal climate control.



WATERREPELLENT 
with a fast drying surface

HEAT INSULATING 
with a low weight

ELASTIC AND SOFT
for a comfortable wearing
comfort

**NEW
STYLE**



available from **MID SEPTEMBER**

DUKE // KNITTED-/FLEECE JACKET

Art. No. 26.465.0

- knitting look fabric in a compact knitting
- heat insulating thanks roughened inner side
- normal fit
- elastic and durable
- dimensionally stable
- high closable collar
- two chest pockets with zipper
- two slit pockets with zipper at the sides
- full-length front zipper with chin protection and wind protection border
- elastic cuffs and hem
- high-quality logo embroidery in contrasting colour

Material: 100% polyester

Colour: graphite (802)

Sizes: S - 3XL

**NEW
STYLE**



available from **MID SEPTEMBER**

COWPER // KNITTED-/SOFTSHELLJACKET

Art. No. 26.460.0

- knit look fabric with softshell inserts
- comfortably soft knitted fleece, 370g/m²
- normal fit
- reflective stripe for better visibility
- high-closable collar
- two chest pockets with zipper
- two slit pockets with zipper at the sides
- windrepellent stretch lining in front area
- full-length front zipper with chin protection and wind protection border
- elastic sleeve cuffs
- adjustable, elastic jacket seam
- high-quality logo embroidery in contrasting colour

Material: 100% polyester

Trimming: 96% polyester, 4% elastane **Lining:** 100% polyester

Colour: orange-black (992)

Sizes: S - 3XL



STIRLING // KNITTED-/SOFTSHELLJACKET

Art. No. 26.459.0

- knit look fabric with softshell inserts
- comfortably soft knitted fleece, 370g/m²
- normal fit
- high-closable collar
- chest pocket with zipper
- two slit pockets with zipper at the sides
- inside pocket with zipper and mobile pocket
- windrepellent stretch lining in front and sleeves
- full-length front zipper with chin protection and wind protection border
- elastic sleeve cuffs, adjustable, elastic jacket seam
- high-quality logo embroidery in contrasting colour

Material: 100% polyester

Trimming: 96% polyester, 4% elastane **Lining:** 100% polyester

Colour: light grey (820)

Sizes: S - 3XL

**NEW
STYLE**



available from **MID SEPTEMBER**



DARBY // KNITTED-/SOFTSHELLJACKET

Art. No. 26.461.0

- knit look fabric with softshell inserts
- comfortably soft knitted fleece, 370g/m²
- normal fit
- reflective stripe for better visibility
- high-closed, adjustable, soft hood
- chest pocket with zipper
- two slit pockets with zipper at the sides
- inside pocket with zipper and pass-through for headphone cord
- windrepellent stretch lining in front and sleeves
- full-length front zipper with chin protection and wind protection border
- adjustable cuffs with velcro
- adjustable, elastic jacket seam
- high-quality logo embroidery in contrasting colour

Material: 100% polyester

Trimming: 96% polyester, 4% elastane **Lining:** 100% polyester

Colour: rot (500)

Sizes: S - 3XL



MAXWELL // KNITTED-/SOFTSHELL JACKET

Art. No. 26.446.0

- knit look fabric with softshell inserts
- comfortably soft knitted fleece, 370g/m²
- normal fit
- reflective stripe for better visibility
- high-closable collar
- chest pocket with zipper
- two slit pockets with zipper at the sides
- full-length front zipper with chin protection and wind protection border
- elastic sleeve cuffs
- adjustable, elastic jacket seam
- high-quality logo embroidery in contrasting colour

Material: 100% polyester

Trimming: 96% polyester, 4% elastane

Colour: blue-black (351)

Sizes: S - 3XL



ARMSTRONG // HOODED JACKET

Art. No. 26.437.0

- knit look fabric with softshell inserts
- comfortably soft knitted fleece, 370 g/m²
- modern fit
- high-closable, soft hood
- full-length front zipper with chin protection and wind protection border
- chest pocket with zipper
- two slit pockets with zipper at the sides
- elastic sleeve cuffs
- adjustable, elastic jacket seam, prolonged back
- high-quality logo embroidery in contrasting colour

Material: 100% polyester

Trimming: 96 % polyester, 4% elastane

Colour: anthracite-black (829)

Sizes: S - 3XL



ALDRIN // HOODED JACKET

Art. No. 26.455.0

- knit look in a new material mix
- knitted fleece 370g/m² with robust softshell inserts
- modern fit
- reflective stripe for better visibility
- adjustable hood
- chest pocket with zipper
- two slit pockets with zipper at the sides
- full-length front zipper with chin protection and wind protection border
- adjustable sleeve cuffs with velcro
- adjustable, elastic jacket seam, prolonged back
- warming, soft plush lining

Material: 100% polyester

Trimming: 96% polyester, 4% elastane **Lining:** 100% polyester

Colours: black (200), olive-black (667)

Sizes: S - 3XL



FLEECE

Fleece fabrics provide many features and thus comfort. Especially the characteristics below make fleece the ideal companion in working and everyday life.

HEAT INSULATING 
with a low weight

WINDREPELLENT 

due to the compact fleece structure

WATERREPELLENT 
with a fast drying surface

WEAR RESISTANT
and therefore long-lasting

ELASTIC AND SOFT
for a comfortable wearing comfort



mobile pocket with
**pass-through for
headphone cord**



EXPLORER BRN // FLEECE/SOFTSHELL JACKET

Art. No. 26.457.0

- heat-insulating microfleece, 280g/m² with softshell trimming
- normal fit
- reflective stripe for better visibility
- high-closable collar
- chest pocket with zipper
- two slit pockets with zipper at the sides
- mobile pocket with pass-through for headphone cord
- full-length front zipper with chin protection and wind protection border
- elastic sleeve cuffs, adjustable, elastic hem
- high-quality logo embroidery

Material: 100% polyester

Trimming: 96% polyester, 4% elasthane

Colour: brown-black (493)

Sizes: S - 4XL



POLARIS // FLEECEJACKET

Art. No. 26.429.0

- heat-insulating polarfleece, 400g/m², 2-layered with micro fleece inside
- wind- and waterrepellent
- comfortable fit
- chest pocket with zipper
- two slit pockets with zipper at the sides
- end-to-end front zipper
- adjustable cuffs with velcro
- adjustable, elastic hem
- high-quality logo embroidery

Material: 100% polyester

Lining: 100% polyamide **Padding:** 100% polyester

Colour: grey (800)

Sizes: S - 4XL



POLAR // WARM FLEECEJACKET

Art. No. 26.273.1

- heat-insulating polarfleece, 280g/m²
- comfortable fit
- high-closable collar
- chest pocket with zipper
- two hand pockets
- elastic sleeve cuffs
- thickly padded quilted lining
- high-quality logo embroidery in contrasting colour

Material: 100% polyester

Lining: 100% polyester **Padding:** 100% polyester

Colours: black (200), olive (615)

Sizes: S - 4XL



print on the side

FREESTYLE SR // FLEECEJACKET

Art. No. 26.439.0

- heat-insulating microfleece, 230g/m²
- robust softshell trimming
- modern fit
- high-closable collar
- two slit pockets with zipper at the sides
- end-to-end front zipper
- elastic sleeve cuffs
- adjustable, elastic hem
- high-quality logo embroidery, seams and zipper in contrast colour
- modern print on the right side

Material: 100% polyester

Colour: black (200)

Sizes: XS - 3XL



MERCURY // FLEECE TROYER

Art. No. 26.443.0

- heat-insulating microfleece, 380g/m²
- hard-wearing polyester/Oxford trimming
- normal fit
- reflective stripe for better visibility
- high-closable collar
- chest pocket with zipper
- elastic sleeve cuffs
- adjustable, elastic hem

Material: 100% polyester

Trimming: 100% polyester

Colour: blue (300)

Sizes: S - 3XL



VECTOR // FUNCTIONAL TROYER

Art. No. 26.426.0

- knitwear look in a new material mix
- knitted fleece with wool content and robust softshell inserts
- micro fleece inside
- comfortable fit
- waterrepellent, windproof and breathable
- reflecting stripes for better visibility
- chest pocket with waterproof zipper
- elastic sleeve cuffs
- adjustable, elastic waistband

Material: 70% polyacrylic, 30% wool

Trimming: 94% polyester, 6% elasthane

Colour: olive-black (667)

Sizes: S - 3XL



RANGER // FLEECE TROYER

Art. No. 26.360.0

- heat-insulating fleece, 330 g/m² with polyester Oxford trimming
- comfortable fit
- high-closable collar
- chest pocket with zipper
- elastic sleeve cuffs
- adjustable waistband

Material: 100% polyester

Trimming: 100% polyester

Colour: olive-black (667)

Sizes: S - 3XL

LADIES



ELECTRA // LADIES FLEECEJACKET

Art. No. 26.401.0

- heat-insulating micro fleece, 280 g/m², antipilling
- FEMININE CUT - waisted, modern fit
- high-closable collar
- two side zipper pockets
- elastic sleeve cuffs
- modern contrasting seams

Material: 100% polyester

Colour: black (200)

Sizes: S - XXL

ALSO AVAILABLE AS A VEST!

Page 27



GEMINI // FLEECEJACKET

Art. No. 26.409.0

- heat-insulating fleece, 330g/m² with polyester Oxford, 600D trimming
- comfortable fit
- high-closable collar
- mobile pocket, chest pocket with zipper and pen loop
- two slit pockets with zipper at the sides
- elastic sleeve cuffs
- adjustable waistband

Material: 100% polyester

Trimming: 100% polyester

Colour: black (200)

Sizes: S - XXL

Colour: grey-black (808) **Sizes:** S - 4XL



reversible



KEPLER // FLEECE/SWEAT REVERSIBLE JACKET

Art. No. 26.392.0

- heat-insulating fleece, reversible with smooth sweat material inner side
- comfortable fit
- adjustable hood
- fleece side with hand pockets
- side of sweat material with useful kangaroo pockets
- elastic knitted sleeve cuffs
- comfortable, wide knitted waistband

Material: 100% polyester **Lining:** 100% polyester

Colour: black-grey (202)

Sizes: S - 3XL



PIONEER // FLEECE TROYER

Art. No. 26.427.0

- heat-insulating fleece, 200 g/m² with polyester Oxford trimming
- comfortable fit
- high-closable collar
- chest pocket with zipper
- elastic sleeve cuffs
- adjustable waistband

Material: 100% polyester

Trimming: 100% polyester

Colour: black-grey (202)

Sizes: S - 3XL



**embroidery and
reflecting stripe
on the back**



FREESTYLE SR // WORKER VEST

Art. No. 27.992.0

- material polyester Oxford, 600 D, PU coated, 180 g/m², modern fit
- wind- and waterrepellent
- reflective stripe for better visibility
- inside collar and sleeve opening with knitted insert
- two chest pockets with flap and velcro
- patch mobile phone pocket and zip pocket
- two hand pockets
- all season lining with comfortable padding
- customisable by an opening in the lining in the back area
- high-quality logo embroidery

Material: 100% polyester **Coating:** 100% polyurethane

Lining: 100% polyester **Padding:** 100% polyester

Colour: grey-black (808)

Sizes: XS - 3XL

25



VOLTA // SOFTSHELL VEST

Art. No. 27.996.0

- 3-layered softshell material with microfleece inside, normal fit
- wind- and waterrepellent, 8.000 mm water column, breathable
- reflective stripe for better visibility
- high-closable collar
- chest pocket with waterproof zipper, two hand pockets
- full-length front zipper with chin protection and wind protection border
- adjustable, elastic hem

Material: 96% polyester, 4% elastane

Colour: black-grey (202)

Sizes: S - 4XL



NOBEL // SOFTSHELL VEST

Art. No. 27.985.0

- 3-layered softshell material with microfleece inside
- wind- and waterrepellent, 8.000 mm water column, breathable
- normal fit
- high-closable collar
- Laser-Cut chest pocket with waterproof zipper
- two slit pockets with zipper at the sides
- full-length front zipper with chin protection and wind protection border
- adjustable, elastic hem
- prolonged back

Material: 96% polyester, 4% elasthane

Colour: blue (300)

Sizes: S - 3XL



EDISON // WORKER VEST

Art. No. 27.931.0

- material polyester Oxford, 600 D, PU coated
- comfortable fit
- reflective stripe for better visibility
- high closable collar
- chest pocket with flap and velcro
- two slit pockets with flap and velcro
- mobile pocket
- all season lining with comfortable padding
- customisable by an opening in the lining in the back area

Material: 100% polyester **Coating:** 100% polyurethane

Lining: 100% polyamide **Padding:** 100% polyester

Colour: black (200)

Sizes: S - 4XL

Colour: grey-black (808) **Sizes:** M - 4XL



HERTZ // WORKER VEST

Art. No. 27.975.0

- material polyester Oxford, 600 D, PU coated
- normal fit
- high-closable collar mit Fleece gefüttert
- two chest pockets with flap and mobile pocket
- two slit pockets with zipper at the sides
- two pockets inside
- prolonged back
- all season lining with comforable padding

Material: 100% polyester **Coating:** 100% polyurethane

Lining: 100% polyamide **Padding:** 100% polyester

Colours: black (200), blue (300)

Sizes: S - 4XL



durable
polyester/Oxford
trimming

**ALSO AVAILABLE
AS A JACKET!**

page 24



COLUMBUS // FLEECE VEST

Art. No. 27.983.0

- heat-insulating fleece, 330g/m² with polyester Oxford, 600D trimming
- comfortable fit
- high-closable collar
- mobile pocket and chest pocket with zipper and pen loops
- two slit pockets with zipper at the sides
- adjustable waistband

Material: 100% polyester

Lining: 100% polyester

Colour: black (200)

Sizes: S - 3XL

Colour: grey-black (808) **Sizes:** M - XXL



AMUNDSEN // QUILTED VEST

Art. No. 27.972.0

- material hard-wearing Ripstop nylon
- comfortable fit
- wind- and waterrepellent
- reflecting stripes for better visibility
- two slit pockets with zipper at the sides
- big pocket inside with velcro

Material: 100% polyamide

Lining: 100% polyamide **Padding:** 100% polyester

Colour: grey-black (808)

Sizes: S - 3XL



TESLA // WORKER VEST

Art. No. 27.984.0

- material extremely hard wearing Beaver nylon, 280 g/m²
- comfortable fit
- wind- and waterrepellent
- reflecting stripes for better visibility
- comfortable fleece-lining inside collar
- two chest pockets with mobile pocket
- two slit pockets with zipper at the sides
- two pockets inside
- warm lining
- customisable by an opening in the lining in the back area

Material: 60% cotton, 40% polyester

Lining: 100% polyester **Padding:** 100% polyester

Colours: green-orange (690), black-grey (202)

Sizes: S - 4XL

**NEW
STYLE**



Available from **MID SEPTEMBER**

FITTER // KNITTED TROYER

Art. No. 26.011.0

- high-quality knitting for good fit
- special compact knitting with high thermal retention
- elastic and hard wearing
- normal fit
- high closable collar with zipper
- high-quality logo badge

Material: 70% polyacrylic, 30% wool

Colours: black (200), green (600)

Sizes: S - 3XL



DELTA // CARDIGAN

Art. No. 26.019.0

- special compact knitting with high thermal retention
- elastic and hard wearing
- comfortable fit
- double knitted collar and cuffs
- high-closable collar
- end-to-end front zipper

Material: 100% polyacrylic

Colours: black (200), anthracite-melange (806)

Sizes: S - 3XL

double knitted collar
and cuffs



OMEGA // KNITTED TROYER

Art. No. 26.018.0

- special compact knitting in melange yarn
- elastic and hard wearing
- comfortable fit
- double knitted collar and cuffs
- high-closable collar also wearable as a turtleneck

Material: 100% polyacrylic

Colour: blue (300)

Sizes: S - 3XL

Colour: light grey (820) **Sizes:** M - XXL



allover print



SCOUT // SWEATSHIRT JACKET

Art. No. 26.424.0

- hard-wearing sweat quality, 320 g/m²
- normal fit
- hood with drawstring and sweat lining
- useful kangaroo pockets
- sleeve and hem cuffs protect against wind and cold
- modern allover print

Material: 80% cotton, 20% polyester

Colour: olive-black (667)

Sizes: S - 4XL



MISSION // SWEATSHIRT

Art. No. 26.421.0

- dimensionally stable, high-quality jersey fabric, 350 g/m²
- high thermal insulation due to brushed reverse
- normal fit
- shirt with round neck and elastic ribbed hem
- neck band in contrasting colour
- sleeve cuffs and hem protect against wind and cold
- high-quality print on front

Material: 80% cotton, 20% polyester

Trimming: 95% cotton, 5% elastane

Colours: black (200), blue (300)

Sizes: S - 3XL



HUNTER // FIBREPILE REVERSIBLE FLEECEJACKET

Art. No. 26.321.0

- warm, light fibrepile quality
- normal fit
- low noise level, wind- and waterrepellent
- high-closable collar
- chest pocket with zipper and pocket for cartridges
- two patch front pockets with zipper
- end-to-end front zipper
- sleeve with knitted cuffs
- reversible with orange inner side and two chest pockets with flap

Material: 100% polyester

Lining: 100% polyester

Colour: olive-orange (615)

Sizes: M - 4XL



WOOL FELTED HAT

Art. No. 25.516.0

- warm wool/felt mix
- heat-insulating and waterrepellent
- reinforced forehead area with cotton
- comfortable lining band ensures high moisture absorption

Material: 65% wool, 35% viscose

Lining: 100% cotton

Colour: olive (615)

One Size



FOREST // FORST JACKET

Art. No. 26.333.0

- heat-insulating fleece, 300 g/m² with contrasting trimmings
- comfortable fit
- high-closable collar
- mobile pocket and chest pocket with zipper
- two patch front pockets with zipper
- end-to-end front zipper
- sleeve with knitted cuffs
- prolonged back

Material: 100% polyester

Lining: 100% polyester

Colour: green-orange (690)

Sizes: S - XL



KING SIZE

GREENWOOD // FIBREPILE JACKET

Art. No. 26.323.0

- warm, light fibrepile quality
- comfortable fit
- low noise level, wind- and waterrepellent
- high-closable collar
- chest pockets with zipper
- two patched slit pockets with zipper
- covered front zipper
- elastic, adjustable sleeve cuffs

Material: 100% polyester

Lining: 100% polyester

Colour: olive (615)

Sizes: S - 4XL



FOREST ISO // NATURAL RUBBER BOOT

Art. No. 57.553.0

Upper: natural rubber

Extra: ideal for hunting, outdoor, fishing and riding, waterproof, neoprene lining of 5 mm thickness - stores and maintains body warmth, comfort temperature range from -11°C to +15°C, extreme range to -22°C, adjustable leg width - up to 5 cm more, strengthening in the toe area, packed in single box

Sole: oil and acid resistant, self cleaning, slip-proof natural rubber outsole with „Steel Shank“ strengthening

Colour: green (600)

Sizes: 37 - 47



CLASSIC // T-SHIRT

Art. No. 29.796.0

- combed cotton-jersey, 180 g/m²
- normal fit, half sleeve
- round neck with elastic cuffs
- contrasting neck band
- high-quality print on front

Material: 100% cotton

Colours: black (200), blue (300), anthracite (806)

Sizes: S - 3XL



ELEMENT // T-SHIRT

Art. No. 29.797.0

- combed cotton-jersey, 160 g/m²
- normal fit
- round neck with double rip cuffs
- contrasting neck band
- half sleeve
- high-quality print on front

Material: 100% cotton

Colour: green-orange (690)

Sizes: S - 2XL

CoolDry Finish
moisture is transported
away from the body



COOLER // FUNCTIONAL POLO-SHIRT

Art. No. 29.781.0

- comfortable polyester-jersey, 165 g/m²
- CoolDry finish
- high moisture transportation, quick-drying and breathable
- normal fit
- polo collar with button panel
- chest pocket with flap in contrasting colour
- raglan sleeves for optimal movement

Material: 100% polyester

Colour: black-blue (256)

Sizes: M - 2XL



REFRESH // FUNCTIONAL POLO-SHIRT

Art. No. 29.795.0

- comfortable polyester-jersey, 165 g/m²
- CoolDry finish
- high moisture transportation, quick-drying and breathable
- normal fit
- polo collar with button panel
- chest pocket with flap in contrasting colour
- pen pocket on sleeve

Material: 100% polyester

Colour: blue-grey (353)

Sizes: S - 3XL



SELECT // LONG SLEEVE SHIRT

Art. No. 29.791.0

- high-quality, combed jersey fabric, 180 g/m²
- normal fit
- round neck with elastic rip cuffs
- neck band in contrasting colour
- high-quality print on the side

Material: 100% cotton

Colour: black (200)

Sizes: S - 3XL

**NEW
STYLE**



two **chest pocktes**
with flap and
button

warm, quilted
nylon lining



straight button panel

adjustable sleeve
cuffs with button



Available from **MID SEPTEMBER**

TILER // THERMOSHIRT

Art. No. 29.210.0

- cotton woollen flannel
- warm, quilted nylon lining
- comfortable fit
- two chest pockets with flap and press button
- two hand pockets
- straight button panel
- adjustable sleeve cuffs with button

Material: 100% cotton

Lining: 100% polyester

Padding: 100% polyester

Colours: black (200), blue (300)

Sizes: S - 3XL



WIRE // THERMOSHIRT

Art. No. 29.208.0

- cotton woollen flannel with polyester Oxford trimming
- comfortable fit
- chest/mobile pocket with flap
- two hand pockets
- straight button panel
- adjustable sleeve cuffs with button
- warm quilted nylon lining

Material: 100% cotton **Trimming:** 100% polyester

Lining: 100% polyester **Padding:** 100% polyester

Colour: olive-black (667)

Sizes: S - 2XL



SOLID // THERMO JACKET

Art. No. 29.203.0

- cotton woollen flannel with warm fleece
- comfortable fit
- troyer collar of warm fleece
- two chest pockets with flap
- two hand pockets
- end-to-end front zipper
- adjustable sleeve cuffs with button
- warm fleece lining with all season padding
- smooth sleeve lining for comfortable put on and take off

Material: 100% cotton **Trimming:** 100% polyester

Lining: 100% polyester **Padding:** 100% polyester

Colour: green (600)

Sizes: S - 2XL



removable **hood**
of **double fleece**



CONSTRUCTION // FLEECE-THERMOJACKET

Art. No. 29.206.0

- printed fleece fabric
- normal fit
- removable hood of double fleece material
- turn-down collar of polar fleece
- two chest pockets with flap and button
- two hand pockets
- end-to-end front zipper
- adjustable sleeve cuffs with button
- warm quilted nylon lining

Material: 100% polyester

Lining: 100% polyamide

Colour: olive-black (667)

Sizes: S - 3XL



COPPER // WOOLLEN FLANNEL SHIRT

Art. No. 29.020.0

- robust woollen flannel, double-sided brush
- 1/1 sleeve
- normal fit
- chest pocket left
- straight button panel
- adjustable sleeve cuffs with button
- length 90 cm

Material: 100% cotton

Colours: grey (800), blue (300), brown (400),
green (600), black (200)

Sizes: 39/40 - 51/52

COPPER LG // WOOLLEN FLANNEL SHIRT, EXTRA LONG

Art. No. 29.030.0

- robust woollen flannel, double-sided brush
- 1/1 sleeve
- normal fit
- chest pocket left
- straight button panel
- adjustable sleeve cuffs with button
- length 105 cm to covers the sensitive kidney area

Material: 100% cotton

Colours: grey (800), blue (300), brown (400),
green (600), black (200)

Sizes: 39/40 - 51/52



(501)

(600)

(300)

(800)

(998)

(615)

SHIRT 1/2 // SHIRT, 1/2 SLEEVE

Art. No. 29.040.0

- woven quality
- half sleeve, normal fit
- chest pocket left
- straight button panel
- length 90 cm

Material: 100% cotton

Colours: blue (300), bordeaux (501), green (600), olive (615), grey (800), coloured (998)

Sizes: 39/40 - 49/50



(600)

(800)

(615)

(998)

(501)

(300)

SHIRT 1/1 // SHIRT, 1/1 SLEEVE

Art. No. 29.050.0

- woven quality
- long sleeve, normal fit
- chest pocket left
- straight button panel
- adjustable sleeve cuffs with butto
- length 90 cm

Material: 100% cotton

Colours: blue (300), bordeaux (501), green (600), olive (615), grey (800), coloured (998)

Sizes: 39/40 - 49/50





comfortable waistband
with double button

top loading
knee pad
pockets

reflecting elements
for better visibility

cargo pocket on the
side with flap

FITS PERFECT:

ASCARI FTX // FUNCTIONAL JACKET

Art. No. 26.452.0

page 14



MADOC TRS // SOFTSHELL TROUSER

Art. No. 28.101.0

- 3-layered softshell material with fleece inside
- hard-wearing polyester Oxford trimming
- normal fit
- wind- and waterrepellent, 8.000 mm water column, breathable
- reflecting stripes for better visibility
- comfortable, elastic waistband with double buttons
- zipper at front
- two side pockets with zipper
- two back pockets with flap and velcro
- cargo pocket on the side with flap
- mobile pocket with velcro
- top loading knee pad pockets with velcro
- high-quality logo embroidery in contrasting colour

Material: 96% polyester, 4% elastane

Trimming: 100% polyester

Colour: black (200)

Sizes: S - 4XL





knee pad
pockets
with
velcro

comfortable
leg cut

MULTITASK // WORKER-JEANS

Art. No. 28.098.0

- modern dark-blue denim, 12 oz
- hard-wearing Cordura patches
- normal fit, comfortable leg cut
- zipper at front
- two hand pockets
- two back pockets with flap and velcro
- cargo pocket on the side with lots of details, ruler and tools pocket
- knee pad pockets with velcro
- seams in contrasting colour

Material: 100% cotton

Colour: blue (300)

Sizes: 44 - 60, 94 - 106



comfortable,
straight cut

light
used effekt

MULTIMETER // JEANS

Art. No. 28.096.0

- hard-wearing denim, 12 oz
- with light used effect
- normal fit, comfortable leg cut
- zipper at front
- 5 pocket style, comfortable straight cut
- length: 34 inch (ca. 86 cm)

Material: 60% cotton, 40% polyester

Colour: blue (300)

Sizes: 48 - 58

SIZE CONVERSION:

Men regular size:	44	46	48	50	52	54	56	58	60
Inch size:	31/34	32/34	33/34	34/34	36/34	38/34	40/34	42/34	44/34
Men slim size:	94	98	102	106					
Inch size:	33/36	34/36	36/36	38/36					

WORKWEAR

FOCUS ON YOUR TASK-

WE HAVE THE PERFECT OUTFIT!

ALBATROS® workwear offers everything you need to feel good at work - perfect fits, flexibility and functional details which make people's lives and work easier.





OVERVIEW

PROFI LINE



PROFI LINE // BLOUSONJACKET

Art. No. 28.634.0

Sizes: XS - 4XL | 46 - 60

Page 45



PROFI LINE // JACKET

Art. No. 28.635.0

Sizes: XS - 4XL | 46 - 60

Page 45

ALLROUND GREEN



ALLROUND GREEN // SOFTSHELL JACKET

Art. No. 26.435.0

Sizes: XS - 3XL

Page 47



ALLROUND GREEN // VEST

Art. No. 27.991.0

Sizes: XS - 3XL

Page 47

ALLROUND BLACK



ALLROUND BLACK // JACKET 2 IN 1

Art. No. 28.625.0

Sizes: XS - 3XL

Page 49



ALLROUND BLACK // VEST

Art. No. 27.987.0

Sizes: XS - 3XL

Page 49

FREESTYLE SR



FREESTYLE SR // JACKET

Art. No. 27.043.0

Sizes: XS - 3XL

Page 51



FREESTYLE SR // WORKER VEST

Art. No. 27.992.0

Sizes: XS - 3XL

Page 51



PROFI LINE // TROUSERS

Art. No. 28.636.0

Sizes: XS - 4XL | 46 - 60

Page 45



PROFI LINE // DUNGAREES

Art. No. 28.637.0

Sizes: XS - 4XL | 46 - 60

Page 44



PROFI LINE // SHORTS

Art. No. 28.638.0

Sizes: XS - 4XL | 46 - 60

Page 45



ALLROUND GREEN // TROUSERS

Art. No. 28.629.0

Sizes: XS - 3XL | 46 - 58

Page 47



ALLROUND GREEN // DUNGAREES

Art. No. 28.630.0

Sizes: XS - 3XL | 46 - 58

Page 46



ALLROUND GREEN // SHORTS

Art. No. 28.624.0

Sizes: XS - 3XL | 46 - 58

Page 47



ALLROUND BLACK // TROUSERS

Art. No. 28.627.0

Sizes: XS - 3XL | 46 - 58

Page 49



ALLROUND BLACK // DUNGAREES

Art. No. 28.632.0

Sizes: XS - 3XL | 46 - 58

Page 48



ALLROUND BLACK // SHORTS

Art. No. 28.628.0

Sizes: XS - 3XL | 46 - 58

Page 49



FREESTYLE SR // FLEECE JACKET

Art. No. 26.439.0

Sizes: XS - 3XL

Page 51



FREESTYLE SR // TROUSERS

Art. No. 28.632.0

Sizes: XS - 3XL

Page 50



FREESTYLE SR // 7/8 TROUSERS

Art. No. 28.631.0

Sizes: XS - 3XL

Page 51



PROFI LINE

PREMIUM PERFORMER FOR HIGH DEMANDS!

Made of pure cotton - a truly natural product!
 Particularly resistant to mechanical/chemical influences.
 Good hygiene properties - moisture is absorbed perfectly and allowed to pass. The material does not stick to the skin.



PROFI LINE // DUNGAREES

Art. No. 28.637.0

- strong cotton twill, 300 g/m²
- tough material reduces dirt adhesion
- normal fit
- reflecting stripes for better visibility
- width-adjustable, comfortable waist
- double bib with zipper pocket
- patch bib pocket with flap and velcro
- length-adjustable, elastic braces with quick clip fastener
- zipper at front
- two hand pockets
- two back pockets with flap and velcro
- cargo pocket with patch closable mobile pocket
- ruler and tools pocket
- top loading knee pad pockets with flap and velcro

Material: 100% cotton

Colours: royal-blue (336), grey-black (808)

Sizes: XS - 4XL | 46 - 60

XS	S	M	L	XL	2XL	3XL	4XL
46	48	50	52	54	56	58	60



mobile pocket
with eyelet for
cable routing



pen pocket
on upper
sleeve

lining with
zipper



PROFI LINE // BLOUSONJACKET

Art. No. 28.634.0

- material polyester Oxford, 300 D, PU coated
- wind- and waterproof
- rolled-up hood inside collar
- reflecting stripes for better visibility
- two chest pockets with flap and velcro, pen pocket on upper sleeve
- two big hand pockets with zipper
- inside pocket with pass-through for headphone cord
- covered front zipper
- adjustable sleeve cuffs with velcro
- width-adjustable, comfortable stretch-waistband
- lightly padded all season lining
- customisable by an opening in the lining in the back area

Material: 100% polyester **Coating:** 100% polyurethane

Lining: 100% polyester **Padding:** 100% polyester

Colour: blue-royal (335)

Sizes: XS - 4XL | 46 - 60



PROFI LINE // JACKET

Art. No. 28.635.0

- strong cotton twill, 300 g/m²
- tough material reduces dirt adhesion
- normal fit
- reflecting stripes for better visibility
- high-closable collar
- two chest pockets with flap and velcro
- mobile pocket with velcro
- pen pocket on upper arm
- two side pockets with zipper
- covered front zipper with additional velcro
- adjustable sleeve cuffs and hem
- mesh lining in the back for more ventilation

Material: 100% cotton

Colours: royal-blue (336), grey-black (808)

Sizes: XS - 4XL | 46 - 60



PROFI LINE // TROUSERS

Art. No. 28.636.0

- strong cotton twill, 270 g/m²
- tough material reduces dirt adhesion
- normal fit
- reflecting stripes for better visibility
- elastic waist
- zipper at front
- two hand pockets
- two back pockets with flap and velcro
- cargo pocket with patch closable mobile pocket
- ruler and tools pocket
- top loading knee pad pockets with flap and velcro

Material: 100% cotton

Colours: royal-blue (336), grey-black (808)

Sizes: XS - 4XL | 46 - 60



PROFI LINE // SHORTS

Art. No. 28.638.0

- strong cotton twill, 270 g/m²
- tough material reduces dirt adhesion
- normal fit
- reflecting stripes for better visibility
- elastic waist
- zipper at front
- two hand pockets
- two back pockets with flap and velcro
- cargo pocket with patch closable mobile pocket
- ruler and tools pocket

Material: 100% cotton

Colours: royal-blue (336), grey-black (808)

Sizes: XS - 4XL | 46 - 60



ALLROUND GREEN

MAXIMUM FUNCTIONALITY!

Hard-wearing and dirt-repellent, low weight.
Easy to clean and dimensionally stable through polyester content. Waterrepellent, breathable Canvas.
Oxford strengthening on the knee and elbows.



ALLROUND GREEN // DUNGAREES

Art. No. 28.630.0

- durable canvas, 300 g/m²
- hard wearing trimmings of polyester/Oxford
- normal fit
- adjustable, comfortable waistband
- double bib with zipper pocket
- patch bib pocket with flap and velcro
- length-adjustable, elastic braces with quick clip fastener
- zipper at front
- two hand pockets
- two back pockets with flap and velcro
- cargo pocket with flap and velcro
- ruler, tools and mobile pocket
- top loading knee pad pockets with flap and velcro

Material: 80% polyester, 20% cotton

Colour: green-black (620)

Sizes: XS - 3XL | 46 - 58

XS	S	M	L	XL	2XL	3XL
46	48	50	52	54	56	58



ALLROUND GREEN // VEST

Art. No. 27.991.0

- durable canvas, 270 g/m²
- normal fit
- reflecting stripes for better visibility
- two chest pockets with velcro and zipper
- two-way flap pockets with flap and velcro
- covered front zipper with velcro
- prolonged back
- lightly padded all season lining
- customisable by an opening in the lining in the back area

Material: 80% polyester, 20% cotton

Lining & Padding: 100% polyester

Colour: green-black (620)

Sizes: XS - 3XL



ALLROUND GREEN // SOFTSHELL JACKET

Art. No. 26.435.0

- 3-layered softshell material with fleece inside
- wind- and waterrepellent, 8.000 mm water column
- breathable
- normal fit
- high-closable, adjustable hood
- chest pocket with zipper
- two side pockets with zipper
- end-to-end front zipper with chin protection and wind protection border
- adjustable sleeve cuffs with velcro
- high-quality logo embroidery in contrasting colour

Material: 96% polyester, 4% elastane

Colour: black-green (205)

Sizes: XS - 3XL



ALLROUND GREEN // TROUSER

Art. No. 28.629.0

- durable canvas, 270 g/m²
- hard wearing trimmings of polyester/Oxford
- normal fit
- elastic waist
- zipper at front
- strengthened belt loops
- two hand pockets
- two back pockets and cargo pockets with flap and velcro
- ruler, tools and mobile pocket
- top loading knee pad pockets with flap and velcro

Material: 80% polyester, 20% cotton

Colour: green-black (620)

Sizes: XS - XXL | 46 - 56



ALLROUND GREEN // SHORTS

Art. No. 28.624.0

- durable canvas, 270 g/m²
- hard wearing trimmings of polyester/Oxford
- normal fit
- elastic waist
- zipper at front
- strengthened belt loops
- two hand pockets
- two back pockets and cargo pockets with flap and velcro
- ruler, tools and mobile pocket

Material: 80% polyester, 20% cotton

Colour: green-black (620)

Sizes: XS - 3XL | 46 - 58



ALLROUND BLACK

MAXIMUM FUNCTIONALITY!

Hard wearing and dirt-repellent, low weight.
Easy to clean and dimensionally stable through polyester content. Waterrepellent, breathable Canvas.
Oxford strengthening on the knee and elbows.



elastic braces with quick fastener



ALLROUND BLACK // DUNGAREES

Art. No. 28.626.0

- durable canvas, 270 g/m²
- hard wearing trimmings of polyester/Oxford
- normal fit
- adjustable, comfortable waist
- double bib with zipper pocket
- patch bib pocket with flap and velcro
- length-adjustable, elastic braces with quick clip fastener
- zipper at front
- two hand pockets
- two back pockets with flap and velcro
- cargo pocket with flap and velcro
- ruler, tools and mobile pocket
- top loading knee pad pockets with flap and velcro

Material: 80% polyester, 20% cotton

Colour: blue-black (351) **Sizes:** XS - XL | 46 - 54

Colour: grey-black (808) **Sizes:** XS - XL | 46 - 54

XS	S	M	L	XL	2XL	3XL
46	48	50	52	54	56	58

JACKET & VEST 2 IN 1!



ALLROUND BLACK // JACKET 2 IN 1

Art. No. 28.625.0

- durable Canvas, 270 g/m²
- hard-wearing trimmings of polyester/Oxford
- normal fit
- high closable collar
- practical cargo pockets with flap and velcro
- mobile pocket with velcro
- removable sleeves also wearable as a vest
- lightly padded all season lining
- customisable by an opening in the lining in the back area

Material: 80% polyester, 20% cotton

Lining: 100% polyamide **Padding:** 100% polyester

Colours: blue-black (351), grey-black (808)

Sizes: XS - 3XL



ALLROUND BLACK // VEST

Art. No. 27.987.0

- durable Canvas, 270 g/m²
- normal fit
- practical cargo pockets with flap and velcro
- mobile pocket with velcro, pen pocket
- light net lining in the back

Material: 80% polyester, 20% cotton

Lining: 100% polyester

Colour: grey-black (808)

Sizes: XS - 3XL



ALLROUND BLACK // TROUSERS

Art. No. 28.627.0

- durable Canvas, 270 g/m²
- hard-wearing trimmings of polyester/Oxford
- normal fit
- elastic waist
- zipper at front
- strengthened belt loops
- two hand pockets
- two back pockets and cargo pockets with flap and velcro
- ruler, tools and mobile pocket
- top loading knee pad pockets with flap and velcro

Material: 80% polyester, 20% cotton

Colour: grey-black (808)

Sizes: XS - 3XL | 46 - 58



ALLROUND BLACK // SHORTS

Art. No. 28.628.0

- durable Canvas, 270 g/m²
- hard-wearing trimmings of polyester/Oxford
- normal fit
- elastic waist
- zipper at front
- strengthened belt loops
- two hand pockets
- two back pockets and cargo pockets with flap and velcro
- ruler, tools and mobile pocket

Material: 80% polyester, 20% cotton

Colour: grey-black (808)

Sizes: XS - 3XL | 46 - 58



FREESTYLE SR

NOT ONLY FOR YOUNG PROFESSIONALS!

Dynamic, innovative design with functional details
as for example new pocket solutions.
Lightweight, robust and durable. Keeps its shape and is colorfast.



FREESTYLE SR // TROUSER

Art. No. 28.632.0

- hard-wearing trimmings of polyester/Oxford
- modern fit
- elastic waist
- zipper at front
- strengthened belt loops
- two hand pockets
- two back pockets and cargo pockets with flap and velcro
- ruler, tools and mobile pocket
- top loading knee pad pockets with flap and velcro

Material: 65% polyester, 35% cotton

Colour: black (200)

Sizes: XS - 3XL



quilted, red lining
with mobile pocket



FREESTYLE SR // JACKET

Art. No. 27.043.0

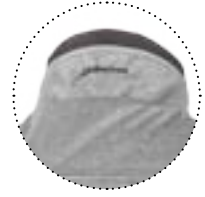
- material polyester Oxford, 300D, PU coated
- wind- and waterrepellent, rolled-up hood inside collar
- modern fit
- two chest pockets with flap and velcro
- patch mobile phone pocket and zip pocket
- upper arm pocket with flap and pen pocket, two side pockets with zipper
- covered front zipper
- adjustable sleeve cuffs and jacket seam with velcro
- lightly padded two coloured all season lining
- customisable by an opening in the lining in the back area
- high-quality logo embroidery

Material: 100% polyester **Coating:** 100% polyurethane

Lining: 100% polyester **Padding:** 100% polyester

Colour: grey (800)

Sizes: XS - 3XL 139513



embroidery and
reflecting stripe
on the back



FREESTYLE SR // VEST

Art. No. 27.992.0

- material polyester Oxford, 300 D, PU coated, 180 g/m²
- wind- and waterrepellent, modern fit
- reflecting stripes for better visibility
- Inside collar and sleeve opening with knitted insert
- two chest pockets with flap and velcro
- patch mobile phone pocket and zip pocket, two hand pockets
- lightly padded all season lining
- customisable by an opening in the lining in the back area
- high-quality logo embroidery

Material: 100% polyester **Coating:** 100% polyurethane

Lining: 100% polyester **Padding:** 100% polyester

Colour: grey-black (808)

Sizes: XS - 3XL



print on the
right side

FREESTYLE SR // FLEECE JACKET

Art. No. 26.439.0

- heat-insulating microfleece, 230g/m²
- robust softshell trimming
- modern fit
- high-closable collar
- two side pockets with zipper
- end-to-end front zipper
- elastic sleeve cuffs
- adjustable, elastic hem
- high-quality logo embroidery, seams and zipper in contrast colour
- modern print on the side

Material: 100% polyester **Trimming:** 96% polyester, 4% elastane

Colour: black (200)

Sizes: XS - 3XL



FREESTYLE SR // 7/8 TROUSERS

Art. No. 28.631.0

- hard-wearing trimmings of polyester/Oxford
- modern fit
- elastic waist
- zipper at front
- strengthened belt loops
- two hand pockets
- two back pockets and cargo pockets with flap and velcro
- ruler, tools and mobile pocket
- top loading knee pad pockets with flap and velcro

Material: 65% polyester, 35% cotton

Colour: black (200)

Sizes: XS - 3XL

RAIN PROTECTION

YOUR EXTRA COMFORT!

High wearing comfort and weather protection when you need it.
ALBATROS® rainwear is so flexible that you can always move
easily - wether at work or in leisure time.





AQUALOCK

PU RAIN PROTECTION FROM ALBATROS®

THE RELIABLE CONTENTNER FOR WET DAYS

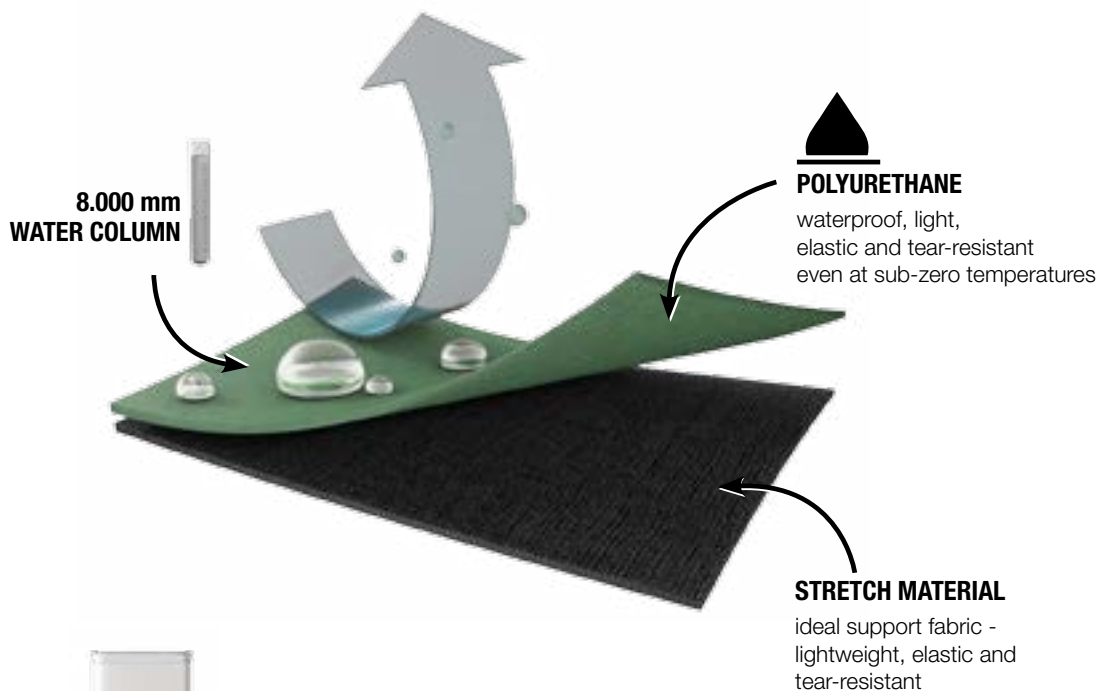
WE DON'T LEAVE YOU OUT IN THE RAIN!

You can rely on the AQUALOCK rain protection range from ALBATROS® – be it on building sites or in agricultural environments, this rainwear will withstand the heaviest rain.

It is made of a high-quality polyurethane that is elastic and highly tear-resistant even at sub-zero temperatures and won't be unduly harmed by a scratch or two.

The polyurethane (PU) makes it reliably wind and waterproof, with a water column of 8,000 mm. The taped seams keep both rain and snow at bay.

The perfect companion for rainy weather!



8.000 mm
ALBATROS®
AQUALOCK

4.000 mm
waterproof according
to EMPA, Switzerland

1.300 mm
waterproof
(class III)

4.800 mm
corresponds to the
pressure on the fabric
when bending your
knees.

2.000 mm
sitting on wet
underground

800 mm
waterproof
(class II)

The degree of water tightness is measured in water column.

To identify the tightness, 10 cm² of the corresponding material is stretched under a cylinder and then exposed to water. The pressure on the material will be increased by 10 mm per second.

The time is measured until drops of water are formed on the bottom of the material. At the water column the pressure is measured at that time in millimeter.

According to the European standard a material is waterproof from 800 mm pressure.

PRACTICAL

with push buttons
covered zipper



FUNCTIONAL

welded zippers
and seams



WATERPROOF

waterproof, light, elastic and
tear-resistant even at sub-zero
temperatures



ADAPTABLE

trousers with elastic
waistband and drawstring



COMFORTABLE

long zipper along the
lower leg for easy
pull-on and pull-off





**NEW
STYLE**



high-closable
collar

removable
hood

8.000 mm
water column



neoprene
cuffs

elastic
hem



ATMOSPHERE // PU-STRETCH RAIN JACKET

Art. No. 27.485.0

- flexible, durable stretch material, PU coated, 170 g/m²
- elastic with high tenacity even at subzero temperatures
- longer fit
- wind- and waterproof, 8.000 mm water column
- waterproof welded seams and zippers
- reflective stripe for better visibility
- removable, adjustable hood with light microfleece lining
- chest pocket with zipper
- two slit pockets with zipper at the sides covered front zipper with wind protection border additionally closable with velcro
- comfortable neoprene cuffs
- elastic hem
- microfleece lining with comfortable padding
- smooth sleeve lining for comfortable put on and take off
- discreet, reflecting logo print

Material: 100% polyester **Coating:** 100% polyurethane

Lining: 100% polyester **Padding:** 100% polyester

Colour: black (200)

Sizes: S - 4XL



FORECAST JKT // PU STRETCH-RAIN JACKET

Art. No. 27.450.0

- flexible, lightweight stretch material, PU coated, 170 g/m²
- elastic with high tenacity even at subzero temperatures
- normal fit
- wind- and waterproof, 8.000 mm water column
- waterproof welded seams
- reflecting stripes for better visibility
- rolled-up, adjustable hood inside collar
- two pockets at front with flap
- covered front zipper with buttons
- adjustable sleeve cuffs with velcro
- adjustable hem

Material: 100% polyester

Coating: 100% polyurethane

Colour: blue (300)

Sizes: S - 3XL



CLIMATE JKT // PU STRETCH RAIN JACKET

Art. No. 27.477.0

- flexible, lightweight stretch material, PU coated, 170 g/m²
- elastic with high tenacity even at subzero temperatures
- longer fit
- wind- and waterproof, 8.000 mm water column
- waterproof welded seams and zippers
- reflecting stripes for better visibility
- rolled-up, adjustable hood inside collar
- adjustable sleeve cuffs with velcro
- elastic hem
- extended back

Material: 100% polyester

Coating: 100% polyurethane

Colour: black-red (210)

Sizes: S - 3XL



FORECAST TRS // PU STRETCH RAIN TROUSERS

Art. No. 27.452.0

- flexible, lightweight stretch material, PU coated, 170 g/m²
- elastic with high tenacity even at subzero temperatures
- normal fit
- wind- and waterproof, 8.000 mm water column
- waterproof welded seams
- reflective stripe for better visibility
- adjustable, elastic waistband
- long zipper along the lower leg for easy pull-on and pull-off

Material: 100% polyester

Coating: 100% polyurethane

Colour: blue (300)

Sizes: S - 3XL



CLIMATE TRS // PU STRETCH RAIN TROUSERS

Art. No. 27.478.0

- flexible, lightweight stretch material, PU coated, 170 g/m²
- elastic with high tenacity even at subzero temperatures
- normal fit
- wind- and waterproof, 8.000 mm water column
- waterproof welded seams and zippers
- reflecting stripes for better visibility
- adjustable, elastic waistband
- long zipper along the lower leg for easy pull-on and pull-off

Material: 100% polyester

Coating: 100% polyurethane

Colour: black-red (210)

Sizes: S - 3XL



BLIZZARD JKT // PU STRETCH RAIN JACKET

Art. No. 27.481.0

- flexible, durable stretch material, PU coated, 200 g/m²
- elastic with high tenacity even at subzero temperatures
- longer fit
- wind- and waterproof, 8.000 mm water column
- waterproof welded seams and zippers
- reflecting stripes for better visibility
- high closable, adjustable hood
- adjustable sleeve cuffs with velcro
- elastic hem

Material: 100% polyester

Coating: 100% polyurethane

Colour: olive-khaki (625)

Sizes: S - 4XL



FREEZE JKT // PU THERMO RAIN JACKET

Art. No. 27.473.0

- flexible, durable stretch material, PU coated, 200 g/m²
- elastic with high tenacity even at subzero temperatures
- longer fit
- wind- and waterproof, 8.000 mm water column
- waterproof welded seams
- reflecting stripes for better visibility
- high closable, adjustable hood
- elastic sleeve cuffs
- adjustable, elastic jacket seam
- quilted lining, thickly padded

Material: 100% polyester

Coating: 100% polyurethane

Lining: 100% polyamide **Padding:** 100% polyester

Colour: olive-black (667)

Sizes: S - 3XL



BLIZZARD TRS // PU STRETCH RAIN TROUSER

Art. No. 27.482.0

- flexible, durable stretch material, PU coated, 200 g/m²
- elastic with high tenacity even at subzero temperatures
- normal fit
- wind- and waterproof, 8.000 mm water column
- waterproof welded seams and zippers
- reflecting stripes for better visibility
- adjustable, elastic waistband
- long zipper along the lower leg for easy pull-on and pull-off

Material: 100% polyester

Coating: 100% polyurethane

Colour: olive-khaki (625)

Sizes: S - 4XL



TWISTER TRS // PU STRETCH RAIN TROUSER

Art. No. 27.463.0

- flexible, durable stretch material, PU coated, 170 g/m²
- normal fit
- elastic with high tenacity even at subzero temperatures
- wind- and waterproof, 8.000 mm water column
- waterproof welded seams
- reflective stripe for better visibility
- signal coloured lower leg
- adjustable, elastic waistband
- long zipper along the lower leg for easy pull-on and pull-off

Material: 100% polyester

Coating: 100% polyurethane

Colour: green-orange (690)

Sizes: S - 3XL



FAHRENHEIT JKT // PU STRETCH RAIN JACKET

Art. No. 27.449.0

- flexible, lightweight stretch material, PU coated, 170 g/m²
- elastic with high tenacity even at subzero temperatures
- longer fit
- wind- and waterproof, 8.000 mm water column
- waterproof welded seams and zippers
- rolled-up, adjustable hood inside collar
- two pockets at front with flap
- covered front zipper with buttons
- adjustable sleeve cuffs with velcro
- adjustable hem

Material: 100% polyester

Coating: 100% polyurethane

Colour: olive (615)

Sizes: S - 3XL



FAHRENHEIT TRS // PU STRETCH RAIN TROUSERS

Art. No. 27.446.0

- flexible, lightweight stretch material, PU coated, 170 g/m²
- elastic with high tenacity even at subzero temperatures
- normal fit
- wind- and waterproof, 8.000 mm water column
- waterproof welded seams
- adjustable, elastic waistband
- long zipper along the lower leg for easy pull-on and pull-off

Material: 100% polyester

Coating: 100% polyurethane

Colour: olive (615)

Sizes: S - 3XL



FAHRENHEIT OVERALL // PU STRETCH RAIN OVERALL

Art. No. 27.453.0

- flexible, lightweight stretch material, PU coated, 170 g/m²
- elastic with high tenacity even at subzero temperatures
- normal fit
- wind- and waterproof, 8.000 mm water column
- waterproof welded seams
- rolled-up, adjustable hood inside collar
- adjustable sleeve cuffs

Material: 100% polyester

Coating: 100% polyurethane

Colour: olive (615)

Sizes: M - 3XL



FAHRENHEIT LATZHOSE // PU STRETCH RAIN DUNGAREES

Art. No. 27.445.0

- flexible, lightweight stretch material, PU coated, 170 g/m²
- elastic with high tenacity even at subzero temperatures
- normal fit
- wind- and waterproof, 8.000 mm water column
- waterproof welded seams
- elastic braces with quick clip fastener

Material: 100% polyester

Coating: 100% polyurethane

Colour: olive (615)

Sizes: S - 3XL



Poncho can be **stored in the chest pocket** and be worn as a **shoulderbag**



UNISEX



CYCLONE // RAIN PONCHO

Art. No. 27.544.0

- with reflecting stripes and welded seams
- can be stored in the chest pocket and be worn as a shoulderbag
- hood with viewing windows in the sides
- elastic arm loops inside
- wind- and waterproof, 8.000 mm water column

Material: 100% polyester

Coating: 100% polyurethane

Colour: black-yellow (671)

Sizes: M/L - XL/XXL



SUPERCCELL // RAIN SUIT

Art. No. 27.543.0

- inured nylon material, PVC coated
- normal fit
- set with jacket and trousers
- wind- and waterproof
- waterproof welded seams

Material: 100% polyester

Coating: 100% polyvinylchlorid

Colour: blue-olive (319)

Sizes: S - 4XL



protection against
wind, water and
cold!



DRIZZLE // PU VEST

Art. No. 27.995.0

- material waterproof polyester fabric, PU coated
- normal fit
- elastic with high tenacity even at subzero temperatures
- wind- and waterproof through welded seam, 8.000 mm water column
- chest pocket with flap and velcro
- two slit pockets with flap and velcro
- prolonged back
- microfleece lining with comfortable padding
- decent logo print

Material: 100% polyester **Coating:** 100% polyurethane

Lining: 100% polyester **Padding:** 100% polyester

Colour: olive (615)

Sizes: S - 3XL



RIVER // WADERS

Art. No. 59.032.0

- one-sided PU coating on knitted polyester fabric
- adjustable straps with plastic clasps
- pocket inside
- boot with high bootleg and good, robust sole
- perfect for fishing, ponds or floods

Material: 100% polyester

Coating: 100% polyurethane

Colour: green (600)

Sizes: 39 - 46, 47, 48, 49/50



APRON // PU/PVC WORKER APRON

Art. No. 28.471.0

- moderate vinyl-quality on polyester fabric, 300 g/m²
- PU coated, length 120 cm
- PVC belly strengthening
- adjustable plastic buckles in the neck
- cord in the waist

Material: 60% polyvinylchlorid,

34% polyester, 6% polyurethane

Coating: 100% polyvinylchlorid

Colour: olive (615)

One Size



FORECAST LATZHOSE //

PU STRETCH RAIN DUNGAREES

Art. No. 27.454.0

- flexible, lightweight stretch material, PU coated, 170 g/m²
- elastic with high tenacity even at subzero temperatures
- normal fit
- wind- and waterproof, 8.000 mm water column
- waterproof welded seams
- reflecting stripes for better visibility
- elastic braces with quick clip fastener
- long zipper along the lower leg for easy pull-on and pull-off

Material: 100% polyester

Coating: 100% polyurethane

Colour: yellow (700)

Sizes: S - 3XL

ACCESSORIES

LITTLE THINGS MAKE THE DIFFERENCE!

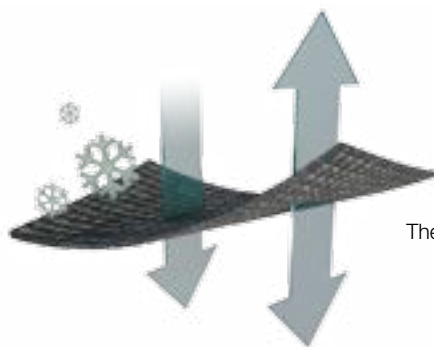
Quickly packed and with you wherever you go - the little helpers.
They protect you against wind, water, cold, sun, are very functional
and look great.





THERMOGETIC

Humans can only achieve maximum performance at a constant body temperature. The THERMOGETIC functional underwear absorbs the body moisture, however doesn't store it, but transports it to the textile's outside where it can evaporate quickly. The body thus remains dry even during physical exertion and is protected against cooling.



BREATHABLE



Our THERMOGETIC functional underwear is breathable and fast drying. A good moisture transport keeps the skin dry.

HIGH THERMAL INSULATION



The brushed surface inside of shirt and trousers creates a particularly high thermal insulation.



THERMOGETIC LA // THERMO FUNCTIONAL SHIRT, 1/1 SLEEVE

Art. No. 26.947.0

- highly elastic, dimensionally stable, smooth jersey, 210 g/m², tight fit
- high thermal insulation due to brushed inside, fast drying, breathable
- a good moisture transport keeps the skin dry

Material: 75% cotton, 25% polyester

Colour: anthracite (806)

Sizes: S (5), M (6), L (7), XL (8), XXL (9)

THERMOGETIC TRS // THERMO FUNCTIONAL TROUSERS

Art. No. 26.948.0

- highly elastic, dimensionally stable, smooth jersey, 210 g/m²
- tight fit, with fly
- high thermal insulation due to brushed inside, fast drying, breathable
- a good moisture transport keeps the skin dry

Material: 75% cotton, 25% polyester

Colour: anthracite (806)

Sizes: S (5), M (6), L (7), XL (8), XXL (9)



**WITH TOUCHSCREEN-
FEATURE**



SENSITIVE // GLOVES WITH TOUCHSCREEN FEATURE

Art. No. 25.065.0

- 3-layered softshell material with microfleece inside
- wind- and waterrepellent
- conductive material on thumb and index finger for optimum handling of smartphones, tablets or touchscreens
- non-slip pads inside
- elastic band at wrist for sheltered fit
- carabiner to connect the gloves
- high-quality logo embroidery

Material: 100% polyester

Colour: black-grey (202)

Sizes: S - 3XL



SENSOR // SOFTSHELL GLOVES

Art. No. 25.063.0

- 3-layered softshell material with microfleece inside
- wind- and waterrepellent, breathable
- reinforced thumb
- elastic band at wrist for sheltered fit, elastic edges at the cuffs
- carabiner to connect the gloves
- high-quality logo embroidery

Material: 96% polyester, 4% elasthane

Colour: black (200)

Sizes: S - 3XL



COLDLOCK // MICROFLEECE GLOVES

Art. No. 25.061.0

- warm, soft microfleece
- Thinsulate® lining for maximum heat-insulation
- best heat storage
- fast drying, breathable and windrepellent
- elastic band at wrist for sheltered fit

Material: 100% polyester

Colours: blue (300), anthracite (806), olive (615)

Sizes: S - 3XL



FREEZEGUARD // KNITTED CAP

Art. No. 25.522.0

- compact double knitting with high thermal insulation
- high elastic and hard-wearing
- high-quality logo embroidery in contrasting colour

Material: 100% polyacrylic

Colour: grey (800)

One Size

Sales only in assortments: 10 pieces

black-grey: 5 pieces, grey-black: pieces



ICEGUARD // MICROFLEECE CAP

Art. No. 25.523.0

- heat-insulating microfleece
- folding ear and neck protection
- width adjustable with elastic band in the back
- high-quality PVC logo badge

Material: 100% polyester

Colour: grey-black (808)

Sizes: 57/58 - 61/62

Sales only in assortments: 10 pieces

black-grey: 5 pieces 1/2/2, grey-black: 5 pieces 2/2/1



COLDGUARD // KNITTED CAP

Art. No. 25.518.0

- warm knitted Rip
- striking melange yarn
- Thinsulate® fleece lining
- high-quality logo embroidery

Material: 100% polyacrylic

Colours: green-black (620), grey-black (808)

One Size

Sales only in assortments: 10 pieces/colour



FROSTGUARD // KNITTED CAP

Art. No. 25.517.0

- warm knitted Rip
- contrasting stripes
- Thinsulate® fleece lining
- high-quality logo embroidery

Material: 100% polyacrylic

Colours: black (200), blue (300)

One Size

Sales only in assortments: 10 pieces/colour



FREEZE PROTECT // KNITTED CAP

Art. No. 25.520.0

- warm knitted Rip
- Thinsulate® fleece lining
- Thinsulate® woven label on border

Material: 100% polyacrylic

Colour: blue (300)

One Size

Sales only in assortments: 10 pieces/colour



COLDLOCK CAP // MICROFLEECE CAP

Art. No. 25.471.0

- warm knitted Rip
- Thinsulate® fleece lining
- with border

Material: 100% polyester

Colours: black (200), blue (300), anthracite (806) and olive (615)

One Size



ISO PRO // KNITTED CAP

Art. No. 25.521.0

- warm knitted Rip
- Thinsulate® fleece lining
- high-quality logo embroidery

Material: 100% polyacrylic

Colour: black (200)

One Size

Sales only in assortments: 10 pieces



WINTER PRO // KNITTED CAP

Art. No. 25.519.0

- warm knitted Rip
- contrasting stripes
- Thinsulate® fleece lining
- high-quality logo embroidery

Material: 100% polyacrylic

Colours: black-grey (202), grey-black (808), green-black (620)

One Size

Sales only in assortments: 10 pieces/colour



DYNAMIC // SOFTSHELL BASEBALLCAP

Art. No. 25.424.0

- 3-layered softshell material with microfleece inside
- wind- and waterrepellent, breathable
- ventilation holes ensure high wearing comfort
- circumferential sweatband for moisture absorption
- adjustable with velcro in the back
- high-quality logo embroidery

Material: 96% polyester, 4% elastane

Colour: black-grey (202)

One Size

Sales only in assortments: 10 pieces

black-grey: 5 pieces, grey-black: 5 pieces



ACTIVATE // SOFTSHELL BASEBALLCAP

Art. No. 25.416.0

- 3-layered softshell material with microfleece inside
- wind- and waterrepellent, breathable
- ventilation holes ensure high wearing comfort
- circumferential sweatband for moisture absorption
- adjustable with velcro in the back
- high-quality logo embroidery

Material: 96% polyester, 4% elastane

Colour: black (200)

One Size

Sales only in assortments: 10 pieces

black-red: 5 pieces, black-blue: 5 pieces



SONIC // BASEBALLCAP

Art. No. 25.414.0

- durable cotton mix quality
- circumferential sweatband for moisture absorption
- adjustable with velcro in the back
- high-quality logo embroidery

Material: 65% polyester, 35% cotton

Colours: black-green (205), green-black (620),
blue-grey (353), grey-blue (826)

One Size

Sales only in assortments: 10 pieces/colour



PADDOCK // COUPLING BELT

Art. No. 23.105.0

- durable belt band, width 4 cm
- metal clasp with bottle opener at the reverse
- adjustable to individual length
- embossed logo on the belt buckle

Material: 90% polyester, 10% cotton

Colour: black (200)

Length: 90 cm, 110 cm, 130 cm



COLDLOCK BAND //
MICROFLEECE HEADBAND
Art. No. 25.473.0

- insulating, smooth microfleece
- protects against wind and cold

Material: 100% polyester
Colours: black (200), anthracite (806)
One Size



COLDLOCK MULTI //
MULTIFUNCTIONAL SCARF/CAP
Art. No. 25.472.0

- insulating, smooth microfleece
- varied in use e. g. as a cap, scarf, face mask or headband
- protects against wind, cold and dust

Material: 100% polyester
Colours: black (200), anthracite (806)
One Size



COLDLOCK SCHAL //
MICROFLEECE SCARF
Art. No. 25.474.0

- insulating, smooth microfleece
- 160 cm length, 25 cm width
- protects against wind and cold

Material: 100% polyester
Colours: black (200), anthracite (806)
One Size



BOGART // WOOLFELT HAT
Art. No. 25.792.0

- pure woolfelt
- heat-insulating and water-repellent
- protecting, wide brim
- ribs lining tape inside
- classic leather tape trimming with brass button

Material: 100% wool
Colours: black (200), green (600)
Sizes: 55/56 - 61/62



HARVESTER // STRAW HAT
Art. No. 25.530.0

- pure natural straw
- ideal shadow dispenser
- pleasantly light and breezy
- ribs lining tape inside
- braided, two colored straw tape trimming

Material: 100% straw
Colour: natural (409)
Sizes: 55/56 - 61/62



TRILBY // STRAW HAT
Art. No. 25.505.0

- pure natural straw
- classic trilby shape
- pleasantly light and breezy
- ribs lining tape inside
- braided, two colored straw tape trimming

Material: 100% straw
Colour: natural (409)
Sizes: 54 - 61



3 PAIR = 1 PRICE

CONTROL TRIO // SNEAKER WORKER SOCK

Art. No. 24.036.0

- durable cotton mix quality
- extremely elastic and soft due to elasthane content
- short shaft
- flat seams for best wearing comfort without pressure marks
- wide comfort band that does not cut
- achilles tendon, heel, sole and toe area padded
- comfortable terry sole
- pack of 3 pairs in the colours grey/orange, black/grey and grey/blue

Material: 50% cotton, 38% polyester
10% viscose, 2% elasthane

Colour: grey (800)

Sizes: 39/42, 43/46



3 PAIR = 1 PRICE

COTTON TRIO // LONG WORKER SOCK

Art. No. 24.030.0

- durable cotton mix quality
- soft by high cotton content
- elastic 3:1 rib
- long shaft
- flat seams for best wearing comfort without pressure marks
- wide comfort band that does not cut
- pack of 3 pairs per colour

Material: 60% cotton, 40% polyester

Colours: black (200), anthracite (806)

Sizes: 39/42

Colour: blue (300) **Sizes:** 39/42, 43/46



inner side
with soft wool

THERMO CONTROL SH // SHORT BOOT SOCK

Art. No. 24.080.0

- temperature regulating, thermo-insulating and quick drying
- keeps the feet always warm and dry, prevents the formation of blisters
- end-to-end, warm wool plush surface prevents from sweaty feet
- extremely hard-wearing due to outer polyamide layer
- wide comfort band that does not cut

Material: outside 100% polyamide,
inside 70% wool, 30% polyester

Colours: grey (800), green (600)

Sizes: 39/41, 42/44, 45/47, 48/52



inner side
with soft wool

THERMO CONTROL LG // LONG SHAFT BOOT SOCK

Art. No. 24.090.0

- end-to-end, warm wool plush surface
- temperature regulating, thermo-insulating and quick drying
- keeps the feet always warm and dry, prevents the formation of blisters
- high-quality pure new wool prevents from sweaty feet
- extremely hard-wearing due to outer polyamide layer
- long shaft
- wide comfort band that does not cut
- ideal for hunting, fishing and all works outside

Material: outside 100% polyamide,
inside 70% wool, 30% polyester

Colours: grey (800), green (600)

Sizes: 39/41, 42/44, 45/47, 48/52



ARCTIC WOOL //

SHEEP'S WOOL SOCK

Art. No. 24.093.0

- warm cotton mix quality
- durable thanks to polyamide
- elastic 1:1 rib
- high-quality new wool prevents perspiring feet
- short shaft
- wide comfort band that does not cut

Material: 70% wool, 15% polyamide, 15% viscose

Colour: grey (800)

Sizes: 39/40, 41/42, 43/44, 45/46, 47/48



NORWEGER SH //

SHORT NORWEGIAN SOCK

Art. No. 24.092.0

- warm cotton mix quality
- durable thanks to polyamide
- the classic in elastic 3:1 rib
- short shaft
- wide comfort band that does not cut

Material: 70% wool, 15% viscose, 15% polyamide

Colour: grey (800)

Sizes: 39/40, 41/42, 43/44, 45/46, 47/48



GUARD //

WORKER SOCK

Art. No. 24.140.0

- warm cotton mix quality
- elastic, short shaft in 1:1 rib
- padded zones in the heel and toe area
- perfect for rubber boots or safety shoes

Material: 60% wool, 30% cotton, 10% polyester

Colours: grey (800), olive (615)

Sizes: 39/41, 42/44, 45/47



2 PAAR = 1 PREIS

TEMPO DUO //

LONG WORKER SOCK

Art. No. 24.037.0

- durable cotton mix quality, long shaft
- extremely elastic and soft due to elastane
- flat seams for best wearing comfort without pressure marks
- wide comfort band that does not cut
- padded zones on the toe, heel area and achilles tendon
- comfortable terry sole
- pack of 2 pairs in the colours black/grey and anthracite/black

Material: 67% cotton, 30% polyester, 3% elastane

Colour: black-grey (202)

Sizes: 39/42, 43/46



SAFE & SOFT //

ALLROUND SOCK

Art. No. 24.031.0

- durable cotton mix quality
- extremely elastic and soft due to elastane
- normal shaft
- flat seams for best wearing comfort without pressure marks
- wide comfort band that does not cut
- padded zones on the toe, heel area and shin
- comfortable terry sole

Material: 80% cotton, 17% polyamide, 3% elastane

Colour: black-grey (202)

Sizes: 39/42, 43/46

**NEW
STYLE**



WORK ESD //

WORKER SOCK

Art. No. 24.038.0

- permanently electrostatic discharge (ESD) due to metal fibre
- tested according to DIN EN 61340-4-3, certified as suitable to be worn in ESD shoes
- temperature equalising thanks to 70% Thermolite® polyester fibre
- durable terry sole
- midfoot strap for perfect fit
- long high-heel for padding at the rear sealing edge of the shoe
- under-toe plush protects from blisters and pressure marks

Material: 70% polyester (Thermocool®), 15% polyester, 8% polyamide, 5% metal fiber, 2% elastane

Colour: black (200)

Sizes: 39/41, 42/44, 45/47

SAFETY SHOES

WE CONCENTRATE ON THE ESSENTIAL -
YOUR SAFETY!

As varied as the daily challenges you have to face. ALBATROS® safety shoes are designed and developed by an international team of experts for personal protection equipment (PSA). For more than 35 years we increase quality, comfort, functionality and design in the long term for your safety.





OVERVIEW

EN ISO 20345:2011 Safety footwear with toe cap tested for protection against 200 Joules impact and 15.000 Newton compression.



Basic requirements e.g. tear strength and water-repellent properties of the upper as well as substance, tear strength, abrasion resistance, resistance to flex cracking and oil resistance of the outsole.
Can be with open seat region (Safety Basic - SB)



Additionally to the basic requirements with closed heel area, antistatic, energy absorption of the heel area, fuel and oil resistant outsole and with penetration resistant midsole.



64.111.0 - **BLUETECH AIR LOW**
S1P ESD SRC

Sizes: 39 - 47
Page 98



64.195.0 - **FREESTYLE BLUE LOW**
S1P ESD SRC

Sizes: 39 - 47
Page 92



64.196.0 - **FREESTYLE BLACK LOW**
S1P ESD SRC

Sizes: 39 - 47
Page 92



64.144.1 - **MOTION XTS LOW**
S1P HRO SRC

Sizes: 39 - 47
Page 89



63.168.1 - **MOTION XTS MID**
S1P HRO SRC

Sizes: 39 - 47
Page 89



64.139.0 - **SILVER RACER XTS LOW**
S1P HRO SRC

Sizes: 39 - 47
Page 87



64.140.1 - **RED RACER XTS LOW**
S1P HRO SRC

Sizes: 39 - 47
Page 87



64.155.0 - **MARATHON XTS LOW**
S1P HRO SRC

Sizes: 39 - 47
Page 89



64.156.0 - **CROSSOVER XTS LOW**
S1P HRO SRC

Sizes: 39 - 47
Page 88



64.171.0 - **ENERGY LOW**
S1P SRC

Sizes: 39 - 47
Page 101



64.662.0 - **ENERGY IMPULSE LOW**
S1P ESD HRO SRA

Sizes: 39 - 47
Page 83



64.660.0 - **LIFT RED IMPULSE LOW**
S1P ESD HRO SRA

Sizes: 39 - 47
Page 83



64.661.0 - **LIFT BLUE IMPULSE LOW**
S1P ESD HRO SRA

Sizes: 39 - 47
Page 83



64.614.0 - **SPORT CSL LOW**
S1P ESD SRC

Sizes: 40 - 48
Page 95

S3

As S1P, additionally with waterrepellent properties of the upper and cleated outsole.



63.150.0 - **RIGGER BOOT**
S3 SRC
Sizes: 39 - 47
Page 109



63.115.0 - **BLUETECH MID**
S3 ESD SRC
Sizes: 39 - 47
Page 98



64.110.0 - **BLUETECH LOW**
S3 ESD SRC
Sizes: 39 - 47
Page 98



64.650.0 - **VIGOR IMPULSE LOW**
S3 ESD HRO SRA
Sizes: 39 - 47
Page 84



63.655.0 - **VIGOR IMPULSE MID**
S3 ESD HRO SRA
Sizes: 39 - 47
Page 84



64.610.0 - **BUSINESS CSL LOW**
S3 ESD SRC
Sizes: 40 - 48
Page 95



64.612.0 - **SMART CSL LOW**
S3 ESD SRC
Sizes: 40 - 48
Page 95



63.112.0 - **GRAVITY CTX MID**
S3 WR SRC
Sizes: 39 - 48
Page 105



63.108.0 - **GRAVITATION MID**
S3 SRC
Sizes: 39 - 48
Page 105





As S1P, additionally with waterrepellent properties of the upper and cleated outsole.



64.108.0 - **GRAVITATION LOW**
S3 SRC

Sizes: 39 - 48
Page 105



63.175.0 - **X-TREME CTX MID**
S3 WR HRO SRC

Sizes: 39 - 47
Page 107



63.186.1 - **UNIT MID**
S3 SRC

Sizes: 39 - 47
Page 102



64.170.0 - **FUNCTION LOW**
S3 SRC

Sizes: 39 - 47
Page 101



63.165.0 - **FUNCTION MID**
S3 SRC

Sizes: 39 - 47
Page 101



64.135.0 - **ENDURANCE LOW**
S3 SRC

Sizes: 39 - 47
Page 102



63.132.0 - **ENDURANCE MID**
S3 SRC

Sizes: 39 - 47
Page 102



64.133.0 - **TIMBER LOW**
S3 SRC

Sizes: 39 - 47
Page 112



63.134.0 - **TIMBER MID**
S3 SRC

Sizes: 39 - 47
Page 112



64.134.0 - **GRAVEL LOW**
S3 SRC

Sizes: 39 - 47
Page 113



63.133.0 - **GRAVEL MID**
S3 SRC

Sizes: 39 - 47
Page 113



64.160.0 - **ROCKY LOW**
S3 SRC

Sizes: 39 - 47
Page 113



63.170.0 - **ROCKY MID**
S3 SRC

Sizes: 39 - 47
Page 112



64.146.0 - **RUNNER XTS LOW**
S3 HRO SRC

Sizes: 39 - 47
Page 88



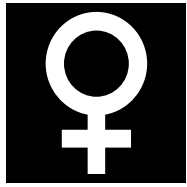
63.169.0 - **RUNNER XTS MID**
S3 HRO SRC

Sizes: 39 - 47
Page 88



63.167.0 - **HIKER XTS MID**
S3 HRO SRC

Sizes: 40 - 47
Page 87



LADIES



64.523.0 - **SWING WNS LOW**
S1 ESD HRO SRC

Sizes: 36 - 42
Page 80



64.521.0 - **TWIST RED WNS LOW**
S1P ESD HRO SRC

Sizes: 36 - 42
Page 80



64.520.0 - **TWIST PINK WNS LOW**
S1P ESD HRO SRC

Sizes: 36 - 42
Page 80



64.522.0 - **JAZZ WNS LOW**
S3 ESD HRO SRC

Sizes: 36 - 42
Page 80





LADIES LINE

PERFECT SAFETY FOR FEMALE FEET. SPECIALLY TAILORED FIT OF UPPER AND SOLE – ADAPTED TO WOMEN'S NEEDS.

RECOMMENDED APPLICATIONS:

TRANSPORT | LOGISTICS | INSTALLATION | CRAFT SECTOR

HARD-WEARING LADIES HRO SOLE

Hard-wearing, up to 300°C heat resistant HRO rubber outsole with flat heel. The sole pattern guarantees slip resistance and excellent grip, especially on ladders. The embedded cushioning elements prevent joints from injuries caused by shock impacts.

ESD

ESD safety shoes are indispensable as they prevent electrostatic charging. They serve to protect from electrostatic discharge, which can e.g. damage or destroy electronic components.

BREATHABLE FUNCTIONAL LINING

The breathable Mesh functional lining ensures an excellent foot climate.

ERGONOMIC WOMEN'S LAST

Specially tailored to smaller ladies' feet for optimal fit and optic.

CUSHIONING EVA MIDSOLE

The soft and lightweight EVA midsole offers optimum cushioning in the heel and forefoot area, where most of the stress during walking arises and improves the flexing action of the foot.

FAP
FLEXIBLE ANTI PENETRATION

FAP® MIDSOLE

FAP® is a non-metallic material especially for safety footwear made of multiple textile layers of extremely tearproof fibers. The FAP® midsole offers greater comfort, flexibility, cold insulation, humidity absorption and shock absorption to the wearer.



Innovative designs, high functionality and a low weight - with FITFRAME® no problem. Seamlessly welded reinforcements combined with breathable textiles ensure maximum breathability and comfort.



TWIST RED WNS LOW // S1P ESD HRO SRC

Art. No. 64.521.0

Protection: steel toe cap and non-metallic, flexible FAP® midsole

Upper: hard-wearing textile fabric with sandwich-mesh and FITFRAME® elements

Extra: ESD, reflecting elements, abrasion resistant toe cap, breathable Mesh functional lining, comfortably padded collar and dust tongue, anatomically formed footbed, cushioning EVA midsole

Sole: Ladies HRO - 300°C heat and slip-resistant rubber outsole

Colour: black-red (210)

Sizes/Width: 36 - 42 | F



TWIST PINK WNS LOW // S1P ESD HRO SRC

Art. No. 64.520.0

Protection: steel toe cap and non-metallic, flexible FAP® midsole

Upper: hard-wearing textile fabric with sandwich-mesh and FITFRAME® elements

Extra: ESD, reflecting elements, abrasion resistant toe cap, breathable Mesh functional lining, comfortably padded collar and dust tongue, anatomically formed footbed, cushioning EVA midsole

Sole: Ladies HRO - 300°C heat and slip-resistant rubber outsole

Colour: grey-pink (804)

Sizes/Width: 36 - 42 | F



SWING WNS LOW // S1 ESD HRO SRC

Art. No. 64.523.0

Protection: steel toe cap

Upper: nubuck leather

Extra: ESD, abrasion resistant toe cap, breathable Mesh functional lining, anatomically formed footbed, cushioning EVA midsole

Sole: Ladies HRO - 300°C heat and slip-resistant rubber outsole

Colour: grey-red (805)

Sizes/Width: 36 - 42 | F



JAZZ WNS LOW // S3 ESD HRO SRC

Art. No. 64.522.0

Protection: steel toe cap and non-metallic, flexible FAP® midsole

Upper: water resistant nubuck leather

Extra: ESD, reflecting elements, breathable Mesh functional lining, comfortably padded collar and dust tongue, anatomically formed footbed, cushioning EVA midsole

Sole: Ladies HRO - 300°C heat and slip-resistant rubber outsole

Colour: black-red (210)

Sizes/Width: 36 - 42 | F



DUAL IMPULSE

DUAL IMPULSE

POWER UP YOUR WORK - THE FIRST SAFETY SHOE LINE WITH DOUBLE FOAMED, EXTREMELY LIGHTWEIGHT MIDSOLE MADE OUT OF IMPULSE.FOAM.

RECOMMENDED APPLICATIONS:

INDUSTRY | INSTALLATION | TRANSPORT | LOGISTICS

SLIP-RESISTANT OUTSOLE

The perfect ground contact ensures the slip and abrasion resistant, up to 300°C heat resistant rubber outsole in the extremely stressed heel and front area of the shoe. As the rubber is not injected over the whole sole, wide flex grooves provide optimal flexion and reduce weight.

ESD

ESD safety shoes are indispensable as they prevent electrostatic charging. They serve to protect from electrostatic discharge, which can e.g. damage or destroy electronic components.

FITFRAME®

Innovative designs, high functionality and a low weight- with FITFRAME® no problem. The lateral reinforcements and the Speedlace lacing system are seamlessly placed on the textile fabric of the upper. They offer comfortable fit and flexibility at the same time.

dual.IMPULSE MIDSOLE

The first safety shoe line with double foamed, extremely lightweight dual.IMPULSE midsole. This intelligent sole concept made of two individual layers of IMPULSE.FOAM offers everything:

Maximum cushioning with optimum energy return as well as excellent stability and long-lasting comfort.

FIBERGLAS TOE CAP

Highly resistant toe cap of fiberglass-reinforced synthetic material. Excellent corrosion behaviour, good electrical and thermal insulation effect and anti-magnetic.

COMFIT® AIR FOOTBED

The extra comfort in your safety footwear.

The newly developed, breathable ALBATROS® comfit® AIR footbed has elevations in the heel and ball area of the foot as well as a support of the longitudinal arch. This helps the foot keeping its natural position in the shoe and stimulates the musculature while walking. The slip-resistant textile cover is odour-resistant, moisture absorbing and washable at 30°C.

 **extra pair of cord laces**
in the box





ENERGY IMPULSE LOW // S1P ESD HRO SRA

Art. No. 64.662.0

Protection: fiberglass toe cap and non-metallic, flexible FAP®-midsole

Upper: hard-wearing textile fabric with sandwich-mesh and FITFRAME®-Elements (seamlessly attached reinforcements)

Extra: ESD, extremely lightweight, breathable functional lining, comfortably padded collar and dust tongue, practical speed lacing system, anatomically formed comfit® AIR footbed, IMPULSE.FOAM Midsole - the two degrees of hardness of the injected EVA Midsole offer an optimal cushioning and comfort

Sole: 300°C heat and slip-resistant rubber outsole

Colour: blue-black (351)

Sizes/Width: 39 - 47 | 11







LIFT BLUE IMPULSE LOW // S1P ESD HRO SRA

Art. No. 64.661.0

Protection: fiberglass toe cap and non-metallic, flexible FAP®-midsole

Upper: durable 3D-Mesh

Extra: ESD, extremely lightweight, breathable functional lining, comfortably padded collar and dust tongue, closed dust tongue, anatomically formed comfit® AIR footbed, IMPULSE.FOAM Midsole - the two degrees of hardness of the injected EVA Midsole offer an optimal cushioning and comfort, TPU heel support, TPU scuff cap

Sole: 300°C heat and slip-resistant rubber outsole

Colour: blue-black (351)

Sizes/Width: 39 - 47 | 11







LIFT RED IMPULSE LOW // S1P ESD HRO SRA

Art. No. 64.660.0

Protection: fiberglass toe cap and non-metallic, flexible FAP®-midsole

Upper: durable 3D-Mesh

Extra: ESD, extremely lightweight, breathable functional lining, comfortably padded collar and dust tongue, closed dust tongue, anatomically formed comfit® AIR footbed, IMPULSE.FOAM Midsole - the two degrees of hardness of the injected EVA Midsole offer an optimal cushioning and comfort, TPU heel support, TPU scuff cap

Sole: 300°C heat and slip-resistant rubber outsole

Colour: black-red (210)

Sizes/Width: 39 - 47 | 11



IMPULSE.FOAM®



VIGOR IMPULSE LOW // S3 ESD HRO SRA

Art. No. 64.650.0

Protection: fiberglass toe cap and non-metallic, flexible FAP®-midsole
Upper: durable smooth full leather

Extra: ESD, breathable functional lining, comfortably padded collar and dust tongue, closed dust tongue, anatomically formed comfit® AIR footbed, IMPULSE.FOAM Midsole - the two degrees of hardness of the injected EVA Midsole offer an optimal cushioning and comfort

Sole: 300°C heat and slip-resistant rubber outsole

Colour: black (200)

Sizes/Width: 39 - 47 | 11



IMPULSE.FOAM®



VIGOR IMPULSE MID // S3 ESD HRO SRA

Art. No. 63.655.0

Protection: fiberglass toe cap and non-metallic, flexible FAP®-midsole
Upper: durable smooth full leather

Extra: ESD, breathable functional lining, comfortably padded collar and dust tongue, closed dust tongue, anatomically formed comfit® AIR footbed, IMPULSE.FOAM Midsole - the two degrees of hardness of the injected EVA Midsole offer an optimal cushioning and comfort

Sole: 300°C heat and slip-resistant rubber outsole

Colour: black (200)

Sizes/Width: 39 - 47 | 11

IMPULSE.FOAM

The revolution in Safety Footwear!
 IMPULSE.FOAM sets new standards:

- extremely light
- maximum cushioning
- superior comfort
- stability

This properties, which are known from the wearers of performance running shoes, are combined for the first time by ALBATROS® in a safety shoe.





SPORT XTS

SPORT XTS

**SPORT & TREKKING MEET SAFETY.
CROSS-TERRAIN SAFETY SHOES WITH THE INNOVATIONS OF
THE WORLD OF TREKKING.**

RECOMMENDED APPLICATIONS:

LOGISTICS | CRAFT SECTOR | OUTDOOR



DGV 112-191 (BGR 191)

Shoes marked with this icon can be equipped by certified orthopaedists or health care supply stores with orthopedic insoles according to DGV 112-191 (BGR 191).



XTS SOLE

Robust, up to 300°C heat-resistant HRO rubber outsole with differently formed profile elements that provide grip on various grounds and have self-cleaning properties. Oil and petrol resistant, antistatic.



FIBERGLASS TOE CAP

Highly resistant toe cap of glass fibre reinforced synthetic material. Excellent corrosion behaviour, good electrical and thermal insulation effect, anti-magnetic.

TPU TORSION PROTECTION UNIT

Specially developed to assist the foot at the sides and to support the natural movement of the foot.

AEROwork MESH

Due to AEROwork Mesh the shoe is ultra light and breathable as the open-pored material ensures optimal ventilation and minimizes sweating. Reinforcements at the sides connected with the lacing system provide perfect fit and stability.

SHOCK ABSORBING EVA MIDSOLE

The soft and lightweight EVA midsole offers optimum cushioning in the heel and forefoot area, where most of the stress during walking arises and improves the flexing action of the foot.

ABRASION PROTECTION

The robust material in the toe cap area protects against abrasion, especially in kneeling positions and thus lengthen the life of the shoe.



FAP® MIDSOLE

FAP® is a non-metallic material especially for safety footwear made of multiple textile layers of extremely tearproof fibers. The FAP® midsole offers greater comfort, flexibility, cold insulation, humidity absorption and shock absorption to the wearer.





HIKER XTS MID // S3 HRO SRC

Art. No. 63.167.0

Protection: fiberglass toe cap and non-metallic, flexible FAP®-midsole

Upper: high quality, hydrophobic nubuck leather

Extra: closed dust tongue, breathable functional lining, anatomically formed comfit footbed (article no. 20.470.0), abrasion protection of rubber in the heel and toe area

Sole: Sport XTS - 300°C heat-resistant rubber outsole with TPU torsion protection

Colour: brown (400)

Sizes/Width: 40 - 47 | 11



SILVER RACER XTS LOW // S1P HRO SRC

Art. No. 64.139.0

Protection: fiberglass toe cap and non-metallic, flexible FAP®-midsole

Upper: abrasion resistant, breathable AEROWORK Mesh

Extra: non-metallic, abrasion resistant toe cap protection of rubber, breathable functional lining, anatomically formed comfit footbed (article no. 20.470.0)

Sole: Sport XTS - 300°C heat-resistant rubber outsole with TPU torsion protection

Colour: black-grey (202)

Sizes/Width: 39 - 47 | 11



RED RACER XTS LOW // S1P HRO SRC

Art. No. 64.140.1

Protection: fiberglass toe cap and non-metallic, flexible FAP®-midsole

Upper: abrasion resistant, breathable AEROWORK Mesh

Extra: non-metallic, abrasion resistant toe cap protection of rubber, breathable functional lining, anatomically formed comfit footbed (article no. 20.470.0)

Sole: Sport XTS - 300°C heat-resistant rubber outsole with TPU torsion protection

Colour: black-red (210)

Sizes/Width: 39 - 47 | 11



FITFRAME
SEAMLESS TECHNOLOGY

XTS
CROSS TERRAIN SOLE



CROSSOVER XTS LOW // S1P HRO SRC

Art. No. 64.156.0

Protection: fiberglass toe cap and non-metallic, flexible FAP®-midsole

Upper: abrasion resistant, breathable AEROwork mesh with FITFRAME® (seamlessly attached reinforcements)

Extra: non-metallic, abrasion resistant toe cap of COMPACT PU (CPU), breathable functional lining, anatomically formed comfit footbed (article no. 20.470.0), cushioning EVA midsole

Sole: Sport XTS - 300°C heat-resistant rubber outsole with TPU torsion protection

Colour: black-blue (256)

Sizes/Width: 39 - 47 | 11



XTS
CROSS TERRAIN SOLE



RUNNER XTS MID // S3 HRO SRC

Art. No. 63.169.0

Protection: fiberglass toe cap and non-metallic, flexible FAP®-midsole

Upper: high-quality oiled nubuck leather

Extra: TPU toe cap protection against abrasion, reflecting stripe at the side, softly padded textile collar and closed dust tongue, breathable functional lining, anatomically formed comfit footbed (article no. 20.470.0), TPU Heel Support System for more stability

Sole: Sport XTS - 300°C heat-resistant rubber outsole with TPU torsion protection

Colour: black (200)

Sizes/Width: 39 - 47 | 11



XTS
CROSS TERRAIN SOLE



RUNNER XTS LOW // S3 HRO SRC

Art. No. 64.146.0

Protection: fiberglass toe cap and non-metallic, flexible FAP®-midsole

Upper: high-quality oiled nubuck leather

Extra: TPU toe cap protection against abrasion, reflecting stripe at the side, softly padded textile collar and dust tongue, breathable functional lining, anatomically formed comfit footbed (article no. 20.470.0), TPU Heel Support System for more stability

Sole: Sport XTS - 300°C heat-resistant rubber outsole with TPU torsion protection

Colour: black (200)

Sizes/Width: 39 - 47 | 11

 extra pair of
cord laces
in the box



MARATHON XTS LOW // S1P HRO SRC

Art. No. 64.155.0

Protection: fiberglass toe cap and non-metallic, flexible FAP®-midsole

Upper: leather with breathable Mesh

Extra: practical fast lacing system, TPU toe cap protection against abrasion, breathable 3D functional lining, anatomically formed comfort footbed (article no. 20.470.0), TPU torsion protection at the sides

Sole: Sport XTS - 300°C heat-resistant rubber outsole with TPU torsion protection

Colour: grey (800)

Sizes/Width: 39 - 47 | 11



MOTION XTS LOW // S1P HRO SRC

Art. No. 64.144.1

Protection: fiberglass toe cap and non-metallic, flexible FAP®-midsole

Upper: high-quality suede leather with breathable Sandwich Mesh

Extra: 3D rubber coating as protection against abrasion, breathable functional lining, closed dust tongue, anatomically formed comfort footbed (article no. 20.470.0)

Sole: Sport XTS - 300°C heat-resistant rubber outsole with TPU torsion protection

Colour: black-grey (202)

Sizes/Width: 39 - 47 | 11



MOTION XTS MID // S1P HRO SRC

Art. No. 63.168.1

Protection: fiberglass toe cap and non-metallic, flexible FAP®-midsole

Upper: high-quality suede leather with breathable Sandwich Mesh

Extra: abrasion resistant toe cap of rubber, breathable functional lining, closed dust tongue, softly padded collar, anatomically formed comfort footbed (article no. 20.470.0)

Sole: Sport XTS - 300°C heat-resistant rubber outsole with TPU torsion protection

Colour: black-grey (202)

Sizes/Width: 39 - 47 | 11



FREESTYLE SR

MULTIFUNCTIONAL TALENT IN STREETWEAR DESIGN.
A SPORTY SAFETY SHOE OFFERING MAXIMUM COMFORT.

RECOMMENDED APPLICATIONS:

LOGISTICS | TRANSPORT | PRODUCTION | CRAFT SECTOR | OUTDOOR



DGV 112-191 (BGR 191)

Shoes marked with this icon can be equipped by certified orthopaedists or health care supply stores with orthopedic insoles according to DGV 112-191 (BGR 191).

ESD

ESD safety shoes are indispensable as they prevent electrostatic charging. They serve to protect from electrostatic discharge, which can e.g. damage or destroy electronic components.

ROTATION POINT

The special feature of the sole is the integrated rotation point. This point in the area of the inner metatarsus is the most overused element when walking during the job. By reinforcing the rotation point, friction and thus fatigue is greatly reduced.

FREESTYLE SR SOLE

The centrepiece of this line is the sole (SRC), for which a bonded concept was deliberately omitted. The material combination PU/PU and the special pattern with a lot of profile allow enormous flexibility and excellent cushioning despite the flat optic.

CUSHIONING PU MIDSOLE

The lightweight PU midsole provides optimal cushioning over the whole foot and shock absorption even on uneven grounds.

COMFIT FOOTBED (Art. No. 20.470.0)

This footbed ensures a pleasant and comfortable foot sensation. A dimensionally stable and breathable material of light PU foam combined with an abrasion resistant Mesh cover absorbs moisture and guarantees optimal cushioning to relieve ligaments and joints. The anatomical form and the arch support ensure perfect fit at the feet. Washable at 30°C.



FREESTYLE BLACK LOW // S1P ESD SRC

Art. No. 64.196.0

Protection: steel toe cap and non-metallic, flexible FAP®-midsole

Upper: suede leather

Extra: ESD, closed dust tongue, breathable Mesh functional lining, anatomically formed comfit footbed (article no. 20.470.0)

Sole: Freestyle SR - slip and oil-resistant DUO-PU sole with rotation point

Colour: black (200)

Sizes/Width: 39 - 47 | 11



FREESTYLE BLUE LOW // S1P ESD SRC

Art. No. 64.195.0

Protection: steel toe cap and non-metallic, flexible FAP®-midsole

Upper: suede leather

Extra: ESD, closed dust tongue, breathable Mesh functional lining, anatomically formed comfit footbed (article no. 20.470.0)

Sole: Freestyle SR - slip and oil-resistant DUO-PU sole with rotation point

Colour: blue (300)

Sizes/Width: 39 - 47 | 11



COMFIT // FOOTBED

Art. No. 20.470.0

- provides a good wearing comfort to the foot
- made out of dimensionally stable, light PU foam
- breathable
- abrasion resistant, moisture absorbing textile cover
- optimal cushioning to protect the joints and ligaments
- washable up to 30°C
- suggested for ALBATROS® safety and occupational shoes

Colour: grey (800)

Sizes: 39 - 47



CASUAL SAFETY

CASUAL SAFETY

**SAFETY SHOES IN A BUSINESS-CASUAL-LOOK.
SAFE CHOICE FOR OFFICE, WAREHOUSE AND PRODUCTION.**

RECOMMENDED APPLICATIONS:

TRANSPORT | LOGISTICS | INSTALLATION | CRAFT SECTOR

CASUAL SOLE

Flat sole concept for the perfect business look. The material combination PU/PU enables an outstanding cushioning and flexibility. The special profile of the sole offers excellent slip resistance according to category SRC.

ESD

ESD safety shoes are indispensable as they prevent electrostatic charging. They serve to protect from electrostatic discharge, which can e.g. damage or destroy electronic components.

CUSHIONING MIDSOLE

The soft and lightweight EVA midsole offers optimum cushioning in the heel and forefoot area, where most of the stress during walking arises and improves the flexing action of the foot.

FAP® MIDSOLE

FAP® is a non-metallic material, especially for safety footwear, made of multiple textile layers of extremely tearproof fibers. The FAP® midsole offers greater comfort, flexibility, cold insulation, humidity absorption and shock absorption to the wearer.

COMFIT® AIR FOOTBED

The extra comfort in your safety footwear. The newly developed, breathable ALBATROS® comfit® AIR footbed has elevations in the heel and ball area of the foot as well as a support of the longitudinal arch. This helps the foot keeping its natural position in the shoe and stimulates the musculature while walking. The slip resistant textile cover is odour-resistant, moisture absorbing and washable at 30°C.





SPORT CSL LOW // S1P ESD SRC

Art. No. 64.614.0

Protection: fiberglass toe cap and non-metallic, flexible FAP® midsole

Upper: high-quality suede leather

Extra: ESD, metal free, perforation on the side gives a higher breathability, comfortably padded collar and dust tongue, breathable functional lining, reflective elements, anatomically formed comfit® AIR footbed

Sole: CASUAL SAFETY - flexible, profiled, slip and abrasion resistant DUO-PU outsole

Colour: grey (800)

Sizes/Width: 40 - 48 | 11



SMART CSL LOW // S3 ESD SRC

Art. No. 64.612.0

Protection: fiberglass toe cap and non-metallic, flexible FAP® midsole

Upper: high-quality oiled full leather

Extra: ESD, metal free, comfortably padded collar and dust tongue, breathable functional lining, reflective elements, anatomically formed comfit® AIR footbed

Sole: CASUAL SAFETY - flexible, profiled, slip and abrasion resistant DUO-PU outsole

Colour: brown (400)

Sizes/Width: 40 - 48 | 11



BUSINESS CSL LOW // S3 ESD SRC

Art. No. 64.610.0

Protection: fiberglass toe cap and non-metallic, flexible FAP® midsole

Upper: smooth full leather

Extra: ESD, metal free, comfortably padded collar and dust tongue, breathable functional lining, anatomically formed comfit® AIR footbed

Sole: CASUAL SAFETY - flexible, profiled, slip and abrasion resistant DUO-PU outsole

Colour: black (200)

Sizes/Width: 40 - 48 | 11



PROFI LINE CSL

**A HIGHLY VERSATILE SOLUTION WITH INNOVATIVE SOLE TECHNOLOGY!
MAXIMUM FREEDOM OF MOVEMENT COMBINED WITH BRILLIANT
WORKMANSHIP.**

RECOMMENDED APPLICATIONS:

INDUSTRY | INSTALLATION | TRANSPORT | LOGISTICS

FITS PERFECTLY:

WORK ESD // WORKER SOCK

Art. No. 24.038.0

Page 71

DIMENSIONALLY STABLE MICROFIBRE

The metal-free upper made of high-quality, durable microfibre is extremely robust and easy to clean. Reflective elements improve the visibility of the wearer.

ESD

ESD safety shoes are indispensable as they prevent electrostatic charging. They serve to protect from electrostatic discharge, which can e.g. damage or destroy electronic components.

CSL SOLE

The combination of PU/PU material and the flat sole concept allows a brilliant flexibility and cushioning. The special profile of the outsole offers excellent slip resistance according to the category SRC.

97

CUSHIONING PU MIDSOLE

The innovative, directly injected light sandwich PU sole ensures maximum flexibility and an ideal sequence of movement.

ABRASION PROTECTION

The abrasion and scratch resistant 3D rubber coating protects the shoe against abrasion especially during kneeling positions.

COMFIT® AIR FOOTBED

The extra comfort in your safety footwear. The newly developed, breathable ALBATROS® comfit® AIR footbed has elevations in the heel and ball area of the foot as well as a support of the longitudinal arch. This helps the foot keeping its natural position in the shoe and stimulates the musculature while walking. The slip resistant textile cover is odour-resistant, moisture absorbing and washable at 30°C.



**NEW
LOOK**



BLUETECH LOW // S3 ESD SRC

Art. No. 64.110.0

Protection: fiberglass toe cap and non-metallic, flexible FAP®-midsole

Upper: high-quality microfibre with abrasion resistant textile elements

Extra: ESD, closed dust tongue, 3D rubber coating as protection against abrasion, breathable 3D Mesh functional lining, anatomically formed comfit® AIR footbed

Sole: CASUAL SAFETY - flexible, profiled, slip and abrasion resistant DUO-PU outsole

Colour: black-blue (256)

Sizes/Width: 40 - 47 | 11

**NEW
LOOK**



BLUETECH MID // S3 ESD SRC

Art. No. 63.115.0

Protection: fiberglass toe cap and non-metallic, flexible FAP®-midsole

Upper: high-quality microfibre with abrasion resistant textile elements

Extra: ESD, closed dust tongue, 3D rubber coating as protection against abrasion, breathable 3D Mesh functional lining, anatomically formed comfit® AIR footbed

Sole: CASUAL SAFETY - flexible, profiled, slip and abrasion resistant DUO-PU outsole

Colour: black-blue (256)

Sizes/Width: 40 - 47 | 11

**NEW
LOOK**



BLUETECH AIR LOW // S1P ESD SRC

Art. No. 64.111.0

Protection: fiberglass toe cap and non-metallic, flexible FAP®-midsole

Upper: high-quality, breathable microfibre

Extra: ESD, practical velcro, breathable 3D Mesh functional lining, anatomically formed comfit® AIR footbed

Sole: CASUAL SAFETY - flexible, profiled, slip and abrasion resistant DUO-PU outsole

Colour: black-blue (256)

Sizes/Width: 40 - 47 | 11



CRAFT^{HD}

CRAFT^{HD}

THE PREMIUM PERFORMER IN A CLEAR DESIGN FOR MOST DEMANDING USE. EXCELLENT SOLE TECHNOLOGY ENSURES OPTIMUM FLEXIBILITY AND MAXIMUM PROTECTION.

RECOMMENDED APPLICATIONS:

CONSTRUCTION | INDUSTRY | INSTALLATION | PRODUCTION



FIBERGLASS CAP

Highly resistant toe cap of glass fibre reinforced synthetic material. Excellent corrosion behaviour, good electrical and thermal insulation effect and anti-magnetic.

CRAFT^{HD} SOLE

The TPU respectively PU outsole with different use-optimised profile elements and integrated shock absorbing element is especially designed for the CRAFT^{HD}. The sole offers high abrasion resistance and improved flexion. Furthermore, the optimised traction and water-displacing profile (wiper effect) ensure a firm grip.

FULL LEATHER

The high quality full leather is characterized by its close fibrous tissue and therefore by high stability, durability and suppleness. When designing the shoes we made sure to use as less seams as possible to ensure among other things that they are easy to clean when getting dirty during the hard work on a construction site.

SHOCK ABSORBER

Directly embedded in the heel area this element absorbs impacts softly and preserves through soft cushioning ligaments and joints from injuries.

ABRASION PROTECTION

The scuff cap prevents the shoe from abrasion especially in kneeling positions.

SHOCK ABSORBING MIDSOLE

A soft PU midsole optimally cushions the high impacts when walking and combines perfectly stability and flexibility.



NEW

COMFIT®RELAX MEMORY FOAM FOOTBED

The thermo-foam of the COMFIT® RELAX footbed adapts individually to your foot due to its reaction to body heat. It offers an optimal pressure distribution over the whole foot. The foot is relieved and gets more support. After taking off the shoes, the footbed returns to its original shape (memory effect). The used textile cover is durable, absorbent, washable up to 30°C (hand wash) and quick drying. Perfect for long working days.



FUNCTION LOW // S3 SRC

Art. No. 64.170.0

Protection: fiberglass toe cap and non-metallic, flexible FAP®-midsole

Upper: greased full leather

Extra: closed dust tongue, breathable functional lining, COMFIT®RELAX Memory Foam footbed

Sole: CRAFT^{HD} TPU - transparent TPU outsole with scuff cap and shock absorber element

Colour: black (200)

Sizes/Width: 39 - 47 | 11



FUNCTION MID // S3 SRC

Art. No. 63.165.0

Protection: fiberglass toe cap and non-metallic, flexible FAP®-midsole

Upper: greased full leather

Extra: closed dust tongue, breathable functional lining, COMFIT®RELAX Memory Foam footbed

Sole: CRAFT^{HD} TPU - transparent TPU outsole with scuff cap and shock absorber element

Colour: black (200)

Sizes/Width: 39 - 47 | 11



ENERGY LOW // S1P SRC

Art. No. 64.171.0

Protection: fiberglass toe cap and non-metallic, flexible FAP®-midsole

Upper: greased full leather

Extra: non-metallic, velcro, breathable functional 3D lining, COMFIT®RELAX Memory Foam footbed

Sole: CRAFT^{HD} TPU - transparent TPU outsole with scuff cap and shock absorber element

Colour: black (200)

Sizes/Width: 39 - 47 | 11



UNIT MID // S3 SRC

Art. No. 63.186.1

Protection: fiberglass toe cap and non-metallic, flexible FAP® midsole
Upper: greased full leather

Extra: reflecting stripes, softly padded collar and closed padded dust tongue, breathable functional lining, COMFIT®RELAX Memory Foam footbed

Sole: CRAFT^{HD} PU - slip-resistant Duo-PU outsole with scuff cap and shock absorber element

Colour: black-blue (256)

Sizes/Width: 39 - 47 | 11



ENDURANCE LOW // S3 SRC

Art. No. 64.135.0

Protection: fiberglass toe cap and non-metallic, flexible FAP® midsole
Upper: oiled full leather

Extra: closed dust tongue, breathable functional lining, COMFIT®RELAX Memory Foam footbed, TPU HEEL SUPPORT heel protection

Sole: CRAFT^{HD} PU - slip-resistant Duo-PU outsole with scuff cap and shock absorber element

Colour: brown-black (493)

Sizes/Width: 39 - 47 | 11



ENDURANCE MID // S3 SRC

Art. No. 63.132.0

Protection: fiberglass toe cap and non-metallic, flexible FAP® midsole
Upper: oiled full leather with additionally TPU strengthening

Extra: closed dust tongue, breathable functional lining, COMFIT®RELAX Memory Foam footbed, TPU HEEL SUPPORT heel protection

Sole: CRAFT^{HD} PU - slip-resistant Duo-PU outsole with scuff cap and shock absorber element

Colour: brown-black (493)

Sizes/Width: 39 - 47 | 11



CLEAR TPU

CLEAR TPU

**SAFETY SHOE CLASSIC FOR PROFESSIONALS WITHOUT FRILLS!
FREEDOM OF MOVEMENT, COMFORT AND OPTIMUM PROTECTION IN
MANY WORKING AREAS.**

RECOMMENDED APPLICATIONS:

INDUSTRY | CONSTRUCTION | INSTALLATION | PRODUCTION

FULL LEATHER

Perfect for outdoor use - high-quality upper materials perfectly crafted with skilled workmanship offer superior comfort and guarantee an everlasting wearing pleasure.

FLEXIBLE TPU OUTSOLE

The depth of the sole profile improves the flexibility as well as the ground contact and has optimal liquid displacing properties. The high quality TPU is non-marking and resistant against abrasion.

SHOCK ABSORBER

This element made of soft TPU material absorbs impacts softly and preserves ligaments and joints.

CUSHIONING MIDSOLE

A soft and light PU midsole optimally cushions the high impacts when walking.

ABRASION PROTECTION

The scuff cap prevents the shoe from abrasion, especially in kneeling positions.



NEW

COMFIT® AIR FOOTBED

The extra comfort in your safety footwear. The newly developed, breathable ALBATROS® comfit® AIR footbed has elevations in the heel and ball area of the foot as well as a support of the longitudinal arch. This helps the foot keeping its natural position in the shoe and stimulates the musculature while walking.

The slip resistant textile cover is odour-resistant, moisture absorbing and washable at 30°C.





GRAVITY CTX MID // S3 WR SRC

Art. No. 63.112.0

Protection: steel toe cap and steel midsole

Upper: smooth full leather

Extra: functional lining with breathable and water resistant COA.TEX® membrane, closed dust tongue and collar made of leather, anatomically formed comfit® AIR footbed

Sole: ClearTPU - slip and abrasion resistant PU/TPU sole with scuff cap and shock absorber element

Colour: black-yellow (263)

Sizes/Width: 39 - 48 | 11



GRAVITATION LOW // S3 SRC

Art. No. 64.108.0

Protection: steel toe cap and steel midsole

Upper: smooth full leather

Extra: closed dust tongue and collar made of leather, breathable 3D functional lining, anatomically formed comfit® AIR footbed

Sole: ClearTPU - slip and abrasion resistant PU/TPU sole with scuff cap and shock absorber element

Colour: black (200)

Sizes/Width: 39 - 48 | 11



GRAVITATION MID // S3 SRC

Art. No. 63.108.0

Protection: steel toe cap and steel midsole

Upper: smooth full leather

Extra: closed dust tongue and collar made of leather, breathable 3D functional lining, anatomically formed comfit® AIR footbed

Sole: ClearTPU - slip and abrasion resistant PU/TPU sole with scuff cap and shock absorber element

Colour: black (200)

Sizes/Width: 39 - 48 | 11



X-TREME

**HEAVY DUTY-EQUIPMENT FOR TOUGH JOBS.
MAXIMUM DURABILITY AND PERFECT ALL-ROUND PROTECTION.**

RECOMMENDED APPLICATIONS:

AGRICULTURAL INDUSTRY | BUILDING TRADE | INSTALLATION



MULTISHIELD®

The special Multishield® leather is, when properly cared for, farmyard resistant, automotive fluid resistant, resistant to dilute acids and alkalis, water resistant and breathable, flame resistant and mold resistant.



COA.TEX® MEMBRANE

Wind- and waterproof, breathable - the membrane transports the sweat to the outside of the fabric and moderates your body temperature to keep you dry and comfortable.

X-TREME SOLE

The "all terrain" cleat pattern made of nitrile rubber is designed to have good slip resistance (SRC) on smooth and uneven surfaces. The sole is also characterized by a polyurethane foamed comfortable midsole that provides underfoot cushioning and heel shock absorption. It is heat resistant to 300°C (HRO) and has a robust scuff cap.



HEEL SUPPORT

The TPU heel protection and the nitrile/rubber sole build a perfectly matched function unit. The heel stabilizer provides ankle support on uneven grounds and helps to maintain the correct ergonomic walking posture.

SCUFF CAP

Abrasion and scratch resistant scuff cap protects the shoe from abrasion especially during kneeling position.



X-TREME CTX MID // S3 WR HRO SRC

Art. No. 63.175.0

Protection: steel toe cap and non-metallic, flexible FAP® midsole

Upper: Multishield® leather

Extra: closed dust tongue of calf leather, breathable functional lining with COA.TEX® membrane, anatomically formed footbed, TPU heel protection HEEL SUPPORT

Sole: X-TREME - 300°C heat resistant, profiled, especially slip resistant nitrile rubber outsole with scuff cap

Colour: black (200)

Sizes/Width: 39 - 47 | 11



FAP® MIDSOLE

FAP® is a non-metallic material, especially for safety footwear, made of multiple textile layers of extremely tearproof fibers. The FAP® midsole offers greater comfort, flexibility, cold insulation, humidity absorption and shock absorption to the wearer.



RIGGER BOOT

AN EXTREMELY SOLID CONSTRUCTION BOOT FOR ANY TERRAIN.

RECOMMENDED APPLICATIONS:

CONSTRUCTION | CRAFTING | OUTDOOR

BREATHABLE FUNCTIONAL LINING

The breathable functional lining avoids heat and moisture accumulation around the foot and provides a comfortable climate inside the shoe.

CUSHIONING SOLE

The shock absorbing, profiled, self-cleaning, slip and oil-resistant Duo-PU sole with toe cap is especially suitable for challenging and rough terrain.

FULL LEATHER

The upper made of resistant smooth full leather offers a long-lasting life period and provides perfect fit through its dimensionally stable characteristics.

COMFORT

The removable, anatomically formed comfit footbed (article no. 20.470.0) ensures fatigue-free walking and standing even after a lot of hours. Pull-on loops on both sides make it easy to put the boot on. A padded heel area supports the perfect fit.



RIGGER BOOT // S3 SRC

Art. No. 63.150.0

Protection: steel toe cap and non-metallic, flexible FAP®-midsole

Upper: smooth full leather

Extra: padded heel area, pull-on help at the sides, breathable functional lining, anatomically formed comfit footbed (article No. 20.470.0)

Sole: RIGGER BOOT - slip and abrasion-resistant Duo-PU sole with scuff cap

Colour: black (200)

Sizes/Width: 39 - 47 | 11



FAP® MIDSOLE

FAP® is a non-metallic material especially for safety footwear made of multiple textile layers of extremely tearproof fibers. The FAP® midsole offers greater comfort, flexibility, cold insulation, humidity absorption and shock absorption to the wearer.





TREKSTAR WORK

A DYNAMIC, MULTI-FUNCTIONAL SHOE. A CLEAR DESIGN WITH A PERFECT FINISH FOR CHALLENGING SITUATIONS.

RECOMMENDED APPLICATIONS:

CRAFT SECTOR | INDUSTRY | LOGISTICS | OUTDOOR

FULL LEATHER

Fine full leathers in combination with high-tech textiles perfectly crafted with skilled workmanship offer superior comfort and guarantee an everlasting wearing pleasure.

SLIP-PROOF TPU OUTSOLE

The slip-resistant (SRC), self-cleaning sole pattern has an improved ability to push away liquids, the so called „wiper effect“. Stagnant water is derived to the sides of the shoe so aquaplaning can be avoided. The sole is oil and petrol resistant, antistatic and also flexible at low temperatures.



CUSHIONING MIDSOLE

A soft PU midsole optimally cushions the high impacts when walking and combines perfect stability and flexibility.

SCUFF CAP

The scuff cap prevents the shoe from abrasion, especially in kneeling positions.

SHOCK ABSORBER

Directly embedded in the heel area this element of TPU absorbs impacts and preserves through soft cushioning ligaments and joints from injuries.



COMFIT FOOTBED (Art. No. 20.470.0)

This footbed ensures a pleasant and comfortable foot sensation. A dimensionally stable and breathable material of light PU foam combined with an abrasion resistant Mesh cover absorbs moisture and guarantees optimal cushioning to relieve ligaments and joints. The anatomical form and the arch support ensure perfect fit at the feet. Washable at 30°C.



TIMBER LOW // S3 SRC

Art. No. 64.133.0

Protection: steel toe cap and non-metallic, flexible FAP®-midsole
Upper: oiled smooth full leather with textile inserts
Extra: closed dust tongue, breathable 3D Mesh functional lining, anatomically formed comfit footbed (article no. 20.470.0)
Sole: TREKSTAR WORK - PU/TPU outsole with scuff cap and shock absorbing element
Colour: brown (400)
Sizes/Width: 39 - 47 | 11



TIMBER MID // S3 SRC

Art. No. 63.134.0

Protection: steel toe cap and non-metallic, flexible FAP®-midsole
Upper: oiled smooth full leather with textile inserts
Extra: closed dust tongue, breathable 3D Mesh functional lining, anatomically formed comfit footbed (article no. 20.470.0)
Sole: TREKSTAR WORK - PU/TPU outsole with scuff cap and shock absorbing element
Colour: brown (400)
Sizes/Width: 39 - 47 | 11



ROCKY MID // S3 SRC

Art. No. 63.170.0

Protection: steel toe cap and non-metallic, flexible FAP®-midsole
Upper: greased smooth full leather with textile inserts
Extra: closed dust tongue, breathable 3D Mesh functional lining, anatomically formed comfit footbed (article no. 20.470.0)
Sole: TREKSTAR WORK - PU/TPU outsole with scuff cap and shock absorbing element
Colour: black (200)
Sizes/Width: 39 - 47 | 11



GRAVEL MID // S3 SRC

Art. No. 63.133.0

Protection: steel toe cap and non-metallic, flexible FAP®-midsole

Upper: oiled smooth full leather with textile inserts

Extra: closed dust tongue, breathable 3D Mesh functional lining, anatomically formed comfort footbed (article no. 20.470.0)

Sole: TREKSTAR WORK - PU/TPU outsole with scuff cap and shock absorbing element

Colour: black-yellow (263)

Sizes/Width: 39 - 47 | 11



GRAVEL LOW // S3 SRC

Art. No. 64.134.0

Protection: steel toe cap and non-metallic, flexible FAP®-midsole

Upper: oiled smooth full leather with textile inserts

Extra: closed dust tongue, breathable 3D Mesh functional lining, anatomically formed comfort footbed (article no. 20.470.0)

Sole: TREKSTAR WORK - PU/TPU outsole with scuff cap and shock absorbing element

Colour: black-yellow (263)

Sizes/Width: 39 - 47 | 11



ROCKY LOW // S3 SRC

Art. No. 64.160.0

Protection: steel toe cap and non-metallic, flexible FAP®-midsole

Upper: greased smooth full leather with textile inserts

Extra: closed dust tongue, breathable 3D Mesh functional lining, anatomically formed comfort footbed (article no. 20.470.0)

Sole: TREKSTAR WORK - PU/TPU outsole with scuff cap and shock absorbing element

Colour: black (200)

Sizes/Width: 39 - 47 | 11



SAFE MID // S3 SRC

Art. No. 63.184.0

Protection: steel toe cap and steel midsole

Upper: leather with abrasion resistant textile inserts

Extra: softly padded collar and closed padded dust tongue, breathable functional lining, anatomically formed footbed

Sole: profiled, self-cleaning DUO-PU sole

Colour: black-blue (256)

Sizes/Width: 39 - 47 | 11



SAFE LOW // S3 SRC

Art. No. 64.188.0

Protection: steel toe cap and Stahlzwischensohle

Upper: leather with abrasion resistant textile inserts

Extra: softly padded collar and closed padded dust tongue, breathable functional lining, anatomically formed footbed

Sole: profiled, self-cleaning DUO-PU sole

Colour: black-blue (256)

Sizes/Width: 39 - 47 | 11



SOLID MID // S3 SRC

Art. No. 63.190.0

Protection: steel toe cap and steel midsole

Upper: grained waterrepellent leather

Extra: closed dust tongue, breathable 3D functional lining, removable, comfortable footbed

Sole: profiled, slip and abrasion resistant DUO-PU sole

Colour: black (200)

Sizes/Width: 39 - 47 | 11



SOLID LOW // S3 SRC

Art. No. 64.185.0

Protection: steel toe cap and steel midsole

Upper: grained waterrepellent leather

Extra: closed dust tongue, breathable 3D functional lining, removable, comfortable footbed

Sole: profiled, slip and abrasion resistant DUO-PU sole

Colour: black (200)

Sizes/Width: 37 - 47 | 11



COMPACT MID // S3 SRC

Art. No. 63.180.0

Protection: composite toe cap and non-metallic, flexible FAP® midsole

Upper: grained waterrepellent leather

Extra: non-metallic, softly padded collar and dust tongue, breathable 3D functional lining, anatomically formed comfortable footbed

Sole: profiled, slip and abrasion resistant DUO-PU sole with scuff cap

Colour: black (200)

Sizes/Width: 36 - 48 | 11



COMPACT LOW // S3 SRC

Art. No. 64.180.0

Protection: composite toe cap and non-metallic, flexible FAP® midsole

Upper: grained waterrepellent leather

Extra: non-metallic, softly padded collar and dust tongue, breathable 3D functional lining, anatomically formed comfortable footbed

Sole: profiled, slip and abrasion resistant DUO-PU sole with scuff cap

Colour: black (200)

Sizes/Width: 36 - 48 | 11

**NORDIC HIGH // S3 CI SRC**

Art. No. 63.183.1

Protection: steel toe cap and non-metallic, flexible FAP® midsole**Upper:** grained waterrepellent leather**Extra:** warm fleece lining, reflecting elements for more safety, softly padded collar and closed padded dust tongue, anatomically formed comfortable footbed, excellent cold insulation due to FAP®**Sole:** abrasion and slip-resistant DUO-PU sole with toe cap and TPU heel protection**Colour:** black (200)**Sizes/Width:** 39 - 48 | 11**INNOVATIVE LOW // S1P SRC**

Art. No. 64.187.0

Protection: steel toe cap and non-metallic, flexible FAP® midsole**Upper:** suede leather with abrasion resistant textile inserts**Extra:** softly padded collar and closed padded dust tongue, breathable 3D functional lining, anatomically formed footbed**Sole:** profiled, slip-resistant DUO-PU sole**Colour:** black-grey (202)**Sizes/Width:** 39 - 47 | 11**INNOVATIVE MID // S1P SRC**

Art. No. 63.188.0

Protection: steel toe cap and non-metallic, flexible FAP® midsole**Upper:** suede leather with abrasion resistant textile inserts**Extra:** softly padded collar and closed padded dust tongue, breathable 3D functional lining, anatomically formed footbed**Sole:** profiled, slip-resistant DUO-PU sole**Colour:** black-grey (202)**Sizes/Width:** 39 - 47 | 11**AIRY LOW // S1P SRC**

Art. No. 64.183.0

Protection: steel toe cap and steel midsole**Upper:** grained leather**Extra:** adjustable velcro, comfortably padded, breathable 3D functional lining, anatomically formed comfortable footbed**Sole:** profiled, slip resistant PU sole**Colour:** black (200)**Sizes/Width:** 39 - 47 | 11

WORK & HIKE

THE BEST OF BOTH WORLDS!

OCCUPATIONAL SHOES ACCORDING TO EN ISO 20347:2012

Designed as trekking shoes with hybrid qualities which make them excellent occupational shoes. The ALBATROS® WORK & HIKE styles embody over 35 years experience in the production of high-quality safety shoes. Certified according to **EN ISO 20347:2012**.



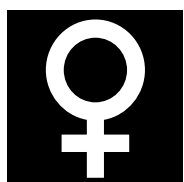


OVERVIEW

OCCUPATIONAL- & TREKKING SHOES ACCORDING TO EN ISO 20347:2012 WITHOUT TOE CAP

OB

Basic requirements e.g. concerning tear strength and water-repellent properties of the upper as well as substance, tear strength, abrasion resistance, resistance to flex cracking and oil resistance of the outsole. Can be with open seat region (Safety Basic - SB)



LADIES



67.255.0 - **SENSA GREEN CTX WNS MID**
O2 WR HRO SRC

Sizes: 36 - 42
Page 123



65.250.0 - **SENSA BLUE CTX WNS LOW**
O2 WR HRO SRC

Sizes: 36 - 42
Page 123



65.251.0 - **ACADIA CTX WNS LOW**
O2 WR HRO SRC

Sizes: 36 - 42
Page 123



Additionally to the basic requirements with closed heel area, antistatic, energy absorption of the heel area. Appropriate for use in dry areas.



65.445.0 - **ELITE BLUE LOW**
O1 HRO SRC

Sizes: 41 - 46
Page 125



65.458.0 - **VOYAGER BLUE LOW**
O1 HRO SRC

Sizes: 40 - 45
Page 125



67.675.0 - **VOYAGER BLUE MID**
O1 HRO SRC

Sizes: 39 - 47
Page 125



65.457.0 - **VOYAGER GREEN LOW**
O1 HRO SRC

Sizes: 39 - 47
Page 126



65.450.0 - **TRAILBLAZER LOW**
O1 HRO SRC

Sizes: 39 - 47
Page 126



65.441.0 - **VANTAGE CTX LOW**
O2 WR HRO SRC

Sizes: 39 - 47
Page 126



as O1, additionally with waterrepellent characteristics. Appropriate for use in wet areas.



65.451.0 - **TRAVELLER LOW**
O2 WR HRO SRC

Sizes: 39 - 47
Page 127



67.167.0 - **GLOBETROTTER MID**
O2 HRO SRC

Sizes: 39 - 47
Page 127



67.470.0 - **PATHFINDER CTX MID**
O2 WR HRO SRC

Sizes: 39 - 47
Page 127



65.753.1 - **CHALLENGER CTX LOW**
O2 WR HRO SRC

Sizes: 39 - 47
Page 127



67.756.0 - **VANTAGE CTX MID**
O2 WR HRO SRC

Sizes: 39 - 47
Page 126



**NEW
STYLE**

67.758.0 - **ISCHGL CTX MID**
O2 WR HRO SRC

Sizes: 36 - 47
Page 123 and Page 128



OVERVIEW

TREKKING SHOES - NON SAFETY



67.644.0 - **MONT BLANC CTX MID**
Sizes: 39 - 47
Page 131



65.865.0 - **EIGER CTX LOW**
Sizes: 39 - 47
Page 131



67.750.0 - **DAVOS CTX MID**
Sizes: 36 - 47
Page 131



65.925.0 - **LISSABON CTX LOW**
Sizes: 39 - 47
Page 134



67.748.0 - **CARDIAC CTX MID**
Sizes: 39 - 47
Page 135



65.236.0 - **CHAMONIX LOW**
Sizes: 36 - 47
Page 134



67.752.0 - **HIGHLANDS CTX MID**
Sizes: 36 - 47
Page 134



65.860.0 - **LOFOTEN CTX LOW**
Sizes: 37 - 47
Page 135



67.851.0 - **LOFOTEN CTX MID**
Sizes: 36 - 47
Page 135



WORK & HIKE

WORK & HIKE LDS

THE HIKING PERFORMER WITH THE LICENCE TO WORK. A TREKKING SHOE THAT WON'T LET YOU DOWN, EVEN AT WORK.

RECOMMENDED APPLICATIONS:

TREKKING/OUTDOOR + PROFESSIONAL AREAS ACCORDING TO O1 AND O2

EN ISO 20347:2012

All models are certified according to EN ISO 20347:2012 and have, among others, the following features: closed heel area, antistatic and energy absorption capacity in the heel area. Shoes of class O2 additionally have a waterresistant upper.

01 02

COA.TEX®-MEMBRANE

Wind- and waterproof, breathable - the membrane transports the sweat to the outside of the fabric and moderates your body temperature to keep you dry and comfortable.

LADIES HRO SOLE

Hard-wearing, up to 300°C heat resistant HRO rubber outsole with flat heel. The sole pattern guarantees slip resistance and excellent grip especially on ladders. The embedded cushioning elements prevent joints from injuries caused by shock impacts.

SHOCK ABSORBING EVA MIDSOLE

The soft and lightweight EVA midsole offers optimum cushioning in the heel and forefoot area, where most of the stress during walking arises and improves the flexing action of the foot.

ERGONOMIC WOMEN'S LAST

Adapted to smaller ladies' feet for optimal fit and optic.

ABRASION PROTECTION

The robust material in the toe area protects against abrasion especially during kneeling positions and extends thereby the life of the shoes.



Innovative designs, high functionality and a low weight - with FITFRAME® no problem. Seamlessly welded reinforcements combined with breathable textiles ensure maximum breathability and comfort.



SENSA BLUE CTX WNS LOW // O2 WR HRO SRC

Art. No. 65.250.0

Upper: hard-wearing textile fabric with Mesh and FITFRAME® (seamless attached strengthening elements)

Extra: according to EN ISO 20347:2012, functional lining with breathable and water resistant COA.TEX® membrane, closed dust tongue, comfortably padded collar and dust tongue, anatomically formed footbed (article no. 20.470.0), cushioning EVA midsole

Sole: LADIES HRO - 300°C heat and slip-resistant rubber outsole

Colour: grey-blue (826)

Sizes/Width: 36 - 42 | F



ACADIA CTX WNS LOW // O2 WR HRO SRC

Art. No. 65.251.0

Upper: leather with textile inserts

Extra: according to EN ISO 20347:2012, functional lining with breathable and water resistant COA.TEX® membrane, closed dust tongue, comfortably padded collar and dust tongue, anatomically formed footbed (article no. 20.470.0), cushioning EVA midsole

Sole: LADIES HRO - 300°C heat and slip-resistant rubber outsole

Colour: black-purple (245)

Sizes/Width: 36 - 42 | F

123

**NEW
STYLE**



SENSA GREEN CTX WNS MID // O2 WR HRO SRC

Art. No. 67.255.0

Upper: hard-wearing textile fabric with Mesh and FITFRAME® (seamless attached strengthening elements)

Extra: according to EN ISO 20347:2012, functional lining with breathable and water resistant COA.TEX® membrane, reflecting elements, closed dust tongue, comfortably padded collar and dust tongue, anatomically formed footbed (article no. 20.470.0), cushioning EVA midsole

Sole: LADIES HRO - 300°C heat and slip-resistant rubber outsole

Colour: grey-green (809)

Sizes/Width: 36 - 42 | F



Available from **OKTOBER**



ISCHGL CTX MID // O2 WR HRO SRC

Art. No. 67.758.0

Upper: high quality greased full leather

Extra: according to EN ISO 20347: 2012, functional lining with breathable and water resistant COA.TEX® membrane, abrasion protection of rubber in the heel and toe area, closed dust tongue, comfortably padded collar and dust tongue, anatomically formed comfort footbed (Art.-Nr. 20.470.0)

Sole: high quality, up to 300°C heat and slip-resistant rubber outsole, IMPULSE.FOAM Midsole for an optimal cushioning and comfort

Colour: black-brown (204)

Sizes/Width: 36 - 42 | 11

WORK & HIKE XTS

THE HIKING PERFORMER WITH THE LICENCE TO WORK. A TREKKING SHOE THAT WON'T LET YOU DOWN, EVEN AT WORK.

RECOMMENDED APPLICATIONS:

TREKKING/OUTDOOR + PROFESSIONAL AREAS ACCORDING TO O1 AND O2

EN ISO 20347:2012

All models are certified according to EN ISO 20347:2012 and have, among others, the following features: closed heel area, antistatic and energy absorption capacity in the heel area. Shoes of class O2 additionally have a waterresistant upper.

01 02



XTS SOHLE

Robust, up to 300°C heat resistant HRO rubber outsole with differently formed profile elements that provide grip on various grounds and have self-cleaning properties. Oil and petrol resistant, antistatic.

TPU TORSION PROTECT UNIT

Specially developed to assist the foot at the sides and to support the natural movement of the foot.

ABRASION PROTECTION

The robust material in the toe area protects against abrasion especially during kneeling positions and extends thereby the life of the shoes.

SHOCK ABSORBING EVA MIDSOLE

The soft and lightweight EVA midsole offers optimum cushioning in the heel and forefoot area, where most of the stress during walking arises and improves the flexing action of the foot.

COMFIT FOOTBED (Art. No. 20.470.0)

This footbed ensures a pleasant and comfortable foot sensation. A dimensionally stable and breathable material of light PU foam combined with an abrasion resistant Mesh cover absorbs moisture and guarantees optimal cushioning to relieve ligaments and joints. The anatomical form and the arch support ensure perfect fit at the feet. Washable at 30°C.





ELITE BLUE LOW // 01 HRO SRC

Art. No. 65.445.0

Upper: almost seamless production in an elaborate Jacquard-weaving technique

Extra: very light and durable, unique woven details, abrasion protection in the toe area, comfortable fit, comfortably padded collar and dust tongue, breathable functional lining, anatomically formed comfit footbed (Art. No. 20.470.0)

Sole: SPORT XTS Sole - high quality, up to 300°C heat resistant rubber Sole with torsion protection, slip resistant on various terrains (SRC)

Colour: blue (300)

Sizes/Width: 41 - 46 | 11



VOYAGER LOW // 01 HRO SRC

Art. No. 65.458.0

Upper: abrasion resistant, breathable Mesh with direct attached TPU elements

Extra: according to EN ISO 20347:2012, breathable functional lining, closed dust tongue, comfortably padded collar and dust tongue, abrasion protection of TPU in the heel and toe area, anatomically formed comfit footbed (article no. 20.470.0)

Sole: SPORT XTS - high quality, heat resistant rubber sole with torsion protection unit for slip-resistant grip on various terrains (SRC)

Colour: blue-black (351)

Sizes/Width: 40 - 45 | 11



VOYAGER MID // 01 HRO SRC

Art. No. 67.675.0

Upper: abrasion resistant, breathable Mesh with direct attached TPU elements

Extra: according to EN ISO 20347:2012, breathable functional lining, closed dust tongue, comfortably padded collar and dust tongue, abrasion protection of TPU in the heel and toe area, anatomically formed comfit footbed (article no. 20.470.0)

Sole: SPORT XTS - high quality, heat resistant rubber sole with torsion protection unit for slip-resistant grip on various terrains (SRC)

Colour: blue-black (351)

Sizes/Width: 39 - 47 | 11



VANTAGE CTX LOW // 02 WR HRO SRC

Art. No. 65.441.0

Upper: leather with abrasion resistant textile inserts and reflecting elements

Extra: according to EN ISO 20347:2012, functional lining with breathable and water resistant COA.TEX® membrane, closed dust tongue, comfortably padded collar and dust tongue, anatomically formed footbed (article no. 20.470.0)

Sole: SPORT XTS - high quality, heat resistant rubber sole with torsion protection unit for slip-resistant grip on various terrains (SRC)

Colour: black (200)

Sizes/Width: 39 - 47 | 11



VANTAGE CTX MID // 02 WR HRO SRC

Art. No. 67.756.0

Upper: leather with abrasion resistant textile inserts

Extra: according to EN ISO 20347:2012, functional lining with breathable and water resistant COA.TEX® membrane, closed dust tongue, comfortably padded collar and dust tongue, anatomically formed footbed (article no. 20.470.0)

Sole: SPORT XTS - high quality, heat resistant rubber sole with torsion protection unit for slip-resistant grip on various terrains (SRC)

Colour: black (200)

Sizes/Width: 39 - 47 | 11



VOYAGER GREEN LOW // 01 HRO SRC

Art. No. 65.457.0

Upper: breathable Mesh with FITFRAME® (seamless attached strengthening elements)

Extra: according to EN ISO 20347: 2012, breathable functional lining, closed dust tongue, comfortably padded collar and dust tongue, toe cap and heel protection of TPU, anatomically formed comfit footbed (article no. 20.470.0)

Sole: Sport XTS - 300°C heat resistant rubber outsole with torsion protection unit, non-slip on various terrains (SRC)

Colour: green-grey (680)

Sizes/Width: 39 - 47 | 11



TRAILBLAZER LOW // 01 HRO SRC

Art. No. 65.450.0

Upper: abrasion resistant, breathable textile with leather

Extra: according to EN ISO 20347: 2012, breathable functional lining, closed dust tongue, comfortably padded collar and dust tongue, anatomically formed comfit footbed (article no. 20.470.0)

Sole: Sport XTS - 300°C heat resistant rubber outsole with torsion protection unit, non-slip on various terrains (SRC)

Colour: anthracite-combined (827)

Sizes/Width: 39 - 47 | 11



02



METAL FREE



PATHFINDER CTX MID // O2 WR HRO SRC

Art. No. 67.470.0

Upper: high quality nubuck and suede leather

Extra: according to EN ISO 20347: 2012, functional lining with breathable and water resistant COA.TEX® membrane, closed dust tongue, comfortably padded collar and dust tongue, anatomically formed comfit footbed (article no. 20.470.0)

Sole: Sport XTS - 300°C heat resistant rubber outsole with torsion protection unit, non-slip on various terrains (SRC)

Colour: anthracite-black (829)

Sizes/Width: 39 - 47 | 11



02



300°C



CHALLENGER CTX LOW // O2 WR HRO SRC

Art. No. 65.753.1

Upper: suede leather with leather and abrasion resistant textile inserts

Extra: according to EN ISO 20347:2012, functional lining with breathable and water resistant COA.TEX® membrane, closed dust tongue, comfortably padded collar and dust tongue, anatomically formed comfit footbed (article no. 20.470.0)

Sole: SPORT XTS - high quality, heat resistant rubber sole with torsion protection unit for slip-resistant grip on various terrains (SRC)

Colour: black-grey (202)

Sizes/Width: 39 - 47 | 11



02



300°C



TRAVELLER LOW // O2 WR HRO SRC

Art. No. 65.451.0

Upper: hydrophobic nubuck leather with embossing

Extra: according to EN ISO 20347: 2012, functional lining with breathable and water resistant COA.TEX® membrane, closed dust tongue, abrasion protection of 3D-rubber in the heel and toe area in heel and toe area, anatomically formed footbed (article no. 20.470.0)

Sole: Sport XTS - 300°C heat resistant rubber outsole with torsion protection unit, non-slip on various terrains (SRC)

Colour: brown (400)

Sizes/Width: 39 - 47 | 11



02



300°C



GLOBETROTTER MID // O2 HRO SRC

Art. No. 67.167.0

Upper: high quality, hydrophobic nubuck leather

Extra: according to EN ISO 20347: 2012, breathable functional lining, abrasion protection of rubber in the heel and toe area, comfortably padded collar and dust tongue, anatomically formed comfit footbed (article no. 20.470.0)

Sole: Sport XTS - 300°C heat resistant rubber outsole with torsion protection unit, non-slip on various terrains (SRC)

Colour: brown (400)

Sizes/Width: 39 - 47 | 11

**NEW
STYLE**



IMPULSE.FOAM®

extremely lightweight, maximum cushioning, excellent comfort and stability



IMPULSE.FOAM®

Lieferbar ab **OKTOBER**

02



ISCHGL CTX MID // 02 WR HRO SRC

Art. No. 67.758.0

Upper: high-quality greased full leather

Extra: according to EN ISO 20347: 2012, functional lining with breathable and water resistant COA.TEX® membrane, abrasion protection of rubber in the heel and toe area, closed dust tongue, comfortably padded collar and dust tongue, anatomically formed comfort footbed (Art.-Nr. 20.470.0)

Sole: high-quality, up to 300°C heat and slip-resistant rubber outsole, IMPULSE.FOAM Midsole for an optimal cushioning and comfort

Colour: black-brown (204)

Sizes/Width: 36 - 42 | 11



HIKER PRO

HIKER PRO

**ROBUST SHOES AND BOOTS FOR ALL FACETS OF TREKKING.
EXCELLENT COMFORT AND A HIGH-QUALITY FINISH MAKE THESE
SHOES A JOY TO WEAR.**

RECOMMENDED APPLICATIONS:

WALKING | LEISURE | PROFESSIONAL HIKING TRIPS

COA.TEX®-MEMBRANE

COA.TEX® is an extremely durable, water-resistant and breathable hightech membrane. Its microporous structure supports the natural cooling process by allowing perspiration to escape while moisture from the outside cannot penetrate. This ensures optimum wearing comfort.

LEATHER

Leather is a specific refined natural product that guarantees superior comfort and an everlasting wearing pleasure.



FLEXIBLE OUTSOLE

Comfortable cushioning and an excellent grip are characteristics of the HIKER PRO TPU sole with its wide flex grooves. Ideal for walking on unpaved gravel or forest roads.

CUSHIONING MIDSOLE

The light PU midsole provides optimal cushioning over the whole foot. It absorbs shocks and uneven grounds.



EIGER CTX LOW

Art. No. 65.865.0

Upper: high-quality greased leather

Extra: functional lining with waterresistant and breathable

COA.TEX® membrane, closed dust tongue, comfortable padded collar and closed dust tongue, removable, anatomically formed footbed

Sole: profiled and slip-resistant PU outsole

Colour: brown (400)

Sizes/Width: 39 - 47 | 11



warm lining



DAVOS CTX MID

Art. No. 67.750.0

Upper: high-quality greased leather with suede leather

Extra: Canadian Boot style, end-to-end warm lining, functional lining with waterresistant and breathable COA.TEX® membrane, comfortable padded collar and closed dust tongue

Sole: high quality, abrasion and slip-resistant PU/TPU outsole

Colour: brown (400)

Sizes/Width: 36 - 47 | 11



MONT BLANC CTX MID

Art. No. 67.644.0

Upper: greased leather with abrasion resistant textile inserts

Extra: functional lining with breathable and waterresistant

COA.TEX® membrane, heel area with abrasion protection of PU coated leather, removable footbed

Sole: profiled, slip-resistant PU outsole

Colour: brown (400)

Sizes/Width: 39 - 47 | 11



MULTITREK

EXPLORE OUTSIDE! THE LIGHTWEIGHT AND ROBUST STYLES ARE SUITABLE FOR ANY TERRAIN AND PROVIDE BEST GRIP

RECOMMENDED APPLICATIONS:

OFF-ROAD, SUCH AS FORESTS, MOUNTAINS, WETLANDS & OTHER NATURAL LANDSCAPES

SLIP-RESISTANT OUTSOLE

A low weight and best grip on a wide variety of grounds characterize this due to its sole pattern with wide flex grooves extremely flexible PU sole.

COATEX® MEMBRANE

COA.TEX® is an extremely durable water-resistant and breathable hightech membrane. Its microporous structure supports the natural cooling process by allowing perspiration to escape while moisture from the outside cannot penetrate. This ensures optimum wearing comfort.



ABRASION PROTECTION

The abrasion resistant toe cap and heel area protect the shoes from scrapes and bumps.

BREATHABLE TEXTILE INSERTS

Abrasion resistant, quick drying textile inserts ensure more breathability and improve the wearing comfort.

HIGH QUALITY UPPER

The soft, but robust uppers like suede leather adapt perfectly to the foot. Textile inserts provide a bonus in lightweight and breathability. The perfect workmanship ensures long comfort.



HIGHLANDS CTX MID

Art. No. 67.752.0

Upper: suede leather with abrasion resistant textile inserts

Extra: abrasion resistant toe cap of PU, heel area with PU coated leather, functional lining with breathable and waterresistant COA.TEX® membrane, comfortable padded collar and tongue, removable footbed

Sole: profiled, slip-resistant PU outsole

Colour: anthracite-combined (827)

Sizes/Width: 36 - 47 | 11



LISSABON CTX LOW

Art. No. 65.925.0

Upper: suede leather with abrasion resistant Cordura® inserts

Extra: functional lining with breathable and waterresistant COA.TEX® membrane, softly padded collar and tongue, innovative design with directly injected TPU elements, abrasion resistant toe cap and heel area, removable footbed

Sole: robust, profiled, slip and abrasion resistant 3-coloured TPU outsole

Colour: black-red (210)

Sizes/Width: 39 - 47 | 11



CHAMONIX LOW

Art. No. 65.236.0

Upper: synthetic fibres with breathable Mesh inserts

Extra: light and robust, simple lacing system with elastic band and stopper, removable footbed

Sole: profiled DUO-PU sole for safe grip

Colour: grey-green (809)

Sizes/Width: 42 - 47 | 11



CARDIAC CTX MID

Art. No. 67.748.0

Upper: suede leather with abrasion resistant textile inserts

Extra: functional lining with breathable and waterresistant COA.TEX® membrane, softly padded collar and tongue, removable footbed

Sole: profiled, slip-resistant PU outsole

Colour: black-ocean (244)

Sizes/Width: 41 - 47 | 11



LOFOTEN CTX LOW

Art. No. 65.860.0

Upper: suede leather with abrasion resistant textile inserts

Extra: heel area and toe cap with abrasion protection of PU coated leather, functional lining with breathable and waterresistant COA.TEX® membrane, comfortable padded collar and tongue, removable footbed

Sole: profiled, slip-resistant PU outsole

Colour: grey-black (808)

Sizes/Width: 37 - 47 | 11



LOFOTEN CTX MID

Art. No. 67.851.0

Upper: suede leather with abrasion resistant textile inserts

Extra: heel area and toe cap with abrasion protection of PU coated leather, functional lining with breathable and waterresistant COA.TEX® membrane, comfortable padded collar and tongue, removable footbed

Sole: profiled, slip-resistant PU outsole

Colour: grey-red (805)

Sizes/Width: 36 - 47 | 11

BOOTS

NOT ONLY MOISTURE PROTECTION!

SAFETY ACCORDING TO EN ISO 20345 AND 20347

The ALBATROS® boot range offers multiple styles which have been designed for a wide variety of situations. We follow two basic principles: maximum protection and greatest possible comfort. We achieve this goal among others by special lasts with a precise and comfortable fit.





OVERVIEW

SAFETY BOOTS EN ISO 20345



TITAN //
S5 CI SRC PU SAFETY BOOT
Art. No. 59.088.0
Sizes: 37 - 47
Page 141



PROTECTOR //
S5 SRA SAFETY BOOT
Art. No. 59.025.0
Sizes: 39 - 50
Page 140



LUMBERJACK //
S4 CHAINSAW BOOT
Art. No. 57.545.0
Sizes: 39 - 47
Page 140

OCCUPATIONAL BOOTS EN ISO 20347



GUARDIAN HIGH GREEN //
NITRILE RUBBER BOOT
Art. No. 56.401.0
Sizes: 36 - 48
Page 142



GUARDIAN MID GREEN //
NITRILE RUBBER BOOT
Art. No. 56.402.0
Sizes: 36 - 48
Page 142



GUARDIAN HIGH BLACK //
NITRILE RUBBER BOOT
Art. No. 56.403.0
Sizes: 36 - 48
Page 142



GUARDIAN MID BLACK //
NITRILE RUBBER BOOT
Art. No. 56.404.0
Sizes: 36 - 48
Page 142

PROFESSIONAL, LEISURE & GARDENING



ARAGON //
NATURAL RUBBER BOOT
Art. No. 57.605.0
Sizes: 36 - 48
Page 145



FOREST ISO //
NATURAL RUBBER BOOT
Art. No. 57.553.0
Sizes: 37 - 47
Page 145



BERYLL //
NATURAL RUBBER BOOT
Art. No. 57.600.0
Sizes: 41 - 47
Page 145



ONYX //
NEOPRENE BOOT
Art. No. 57.554.0
Sizes: 37 - 46
Page 146



**NEW
STYLE**

MONSUN MID //
NEOPRENE ANKLE BOOT
Art. No. 57.616.0
Sizes: 36 - 46
Page 148



**NEW
LOOK**

MONSUN //
LADIES NEOPRENE GARDEN CLOG
Art. No. 55.020.1
Sizes: 36 - 46
Page 149



**NEW
STYLE**

MONSUN LADY //
LADIES NEOPRENE GARDEN CLOG
Art. No. 55.023.0
Sizes: 36 - 46
Page 149



FLORA //
GARDEN CLOG
Art. No. 55.015.0
Sizes: 36 - 41
Page 148



**NEW
STYLE**

THE RANCHER //

PVC BOOT
Art. No. 59.308.0
Sizes: 36 - 48
Page 143

139



TOPAS //
LADIES NEOPRENE BOOT
Art. No. 57.555.0
Sizes: 36 - 42
Page 146



AURORA //
LADIES NATURAL RUBBER BOOT
Art. No. 57.603.0
Sizes: 36 - 41
Page 146



SMARAGD //
LADIES BOOT
Art. No. 52.184.0
Sizes: 36 - 42
Page 143



JUWEL //
LADIES & KIDS BOOT
Art. No. 53.601.0
Sizes: 27 - 30
31 - 35
36 - 42
Page 143



FLORA BLUE //
GARDEN CLOG
Art. No. 55.016.0
Sizes: 36 - 41
Page 148



POLISH & CARE // CARE PRODUCT
Art. No. 20.905.0
150 ml

SAFETY BOOTS

ACCORDING TO EN ISO 20345



PROTECTOR // S5 SRA SAFETY BOOT

Art. No. 59.025.0

Upper: PVC

Protection: steel toe cap and steel midsole

Extra: comfortable wide fit in the toe area, reflecting material in the heel area, shortable bootleg, ankle protection, instep strengthening and pull on/pull off help

Sole: robust, oil, petrol, acid and alkali resistant, antistatic PVC/nitrile outsole with shock absorber

Colours: black (200), green (600), yellow (700)

Sizes: 39 - 50



LUMBERJACK // S4 CHAINSAW BOOT

Art. No. 57.545.0

Upper: natural rubber

Protection: steel toe cap and cut resistant insert according to EN 345-2 SB

Extra: cut protection class 3, KWF certified, adjustable bootleg, stable heel fit, abrasion resistant cotton lining, inserted felt sole for comfortable walking

Sole: shock-absorbing, profiled, cleated, acid-resistant outsole of nitrile rubber

Colour: orange-green (993)

Sizes: 39 - 47



POLISH & CARE // CARE PRODUCT

Art. No. 20.905.0

- for careful cleaning and care of boots made of natural rubber, PVC and nitrile rubber
- protection against material fatigue and cracks when using regularly
- colourless, so suitable for all colored boots
- 150 ml

**CERTIFIED ACCORDING
TO EN ISO 20345**



141



TITAN // S5 CI SRC PU SAFETY BOOT

Art. No. 59.088.0

Upper: ELASTOPAN® from BASF, high-quality polyurethane

Protection: steel toe cap and steel midsole

Extra: thermally isolating, instep strengthening, shortable bootleg, pull-on and pull-off help, anatomically formed footbed, fast drying, abrasion resistant lining

Sole: profiled, shock absorbing outsole

Colour: green (600)

Sizes: 37 - 47

OCCUPATIONAL BOOTS

ACCORDING TO EN ISO 20347

These ALBATROS® professional boots are produced according to DIN EN ISO 20347 made of nitrile rubber. They

- are free from cadmium, plumb and barium
- have a low chlorine content to protect the environment
- are extremely flexible at cold temperatures and tolerate high and low temperatures (+/-30°C)

Upper and sole are resistant to

- mineral oil
- animal and vegetable fat
- petrochemicals, bitumen, casein, blood
- ammonia, diluted acids and alkalis

These boots have an improved energy absorption in the heel area and an abrasion and slip-resistant cleated outsole with shock absorbing heel.



GUARDIAN HIGH GREEN // NITRILE RUBBER BOOT

Art. No. 56.401.0

Upper: nitrile rubber

Extra: occupational boot according to EN ISO 20347, high boot with shortable bootleg, lining of 95% polyester and 5% elastic fabric

Sole: slip-resistant and profiled outsole resistant to liquid manure, chalk, cement, fuel, bases, oils, fat and to a high extent against acids

Colour: green (600)

Sizes: 36 - 48



GUARDIAN HIGH BLACK // NITRILE RUBBER BOOT

Art. No. 56.403.0

Upper: nitrile rubber

Extra: occupational boot according to EN ISO 20347, high boot with shortable bootleg, lining of 95% polyester and 5% elastic fabric

Sole: slip-resistant and profiled outsole resistant to liquid manure, chalk, cement, fuel, bases, oils, fat and to a high extent against acids

Colour: black (200)

Sizes: 36 - 48



GUARDIAN MID GREEN // NITRILE RUBBER BOOT

Art. No. 56.402.0

Upper: nitrile rubber

Extra: occupational boot according to EN ISO 20347, low bootleg, lining of 95% polyester and 5% elastic fabric

Sole: slip-resistant and profiled outsole resistant to liquid manure, chalk, cement, fuel, bases, oils, fat and to a high extent against acids

Colour: green (600)

Sizes: 36 - 48



GUARDIAN MID BLACK // NITRILE RUBBER BOOT

Art. No. 56.404.0

Upper: nitrile rubber

Extra: occupational boot according to EN ISO 20347, low bootleg, lining of 95% polyester and 5% elastic fabric

Sole: slip-resistant and profiled outsole resistant to liquid manure, chalk, cement, fuel, bases, oils, fat and to a high extent against acids

Colour: black (200)

Sizes: 36 - 48



JUWEL // LADIES AND KIDS BOOT

Art. No. 53.601.0

Upper: PVC

Extra: nylon lining, strengthening in the toe area for easier pull-off

Sole: slip resistant, profiled outsole

Colour: blue (300)

Sizes: 27 - 42



SMARAGD // LADIES BOOT

Art. No. 52.184.0

Upper: PVC

Extra: lightweight and comfortable, resistant nylon lining

Sole: slip resistant, profiled outsole

Colour: green (600)

Sizes: 36 - 42

**NEW
STYLE**



THE RANCHER // PVC BOOT

Art. No. 59.308.0

Upper: PVC, phthalates free

Extra: occupational boot according to EN ISO 20347:2012 OB E SRA, high quality, fast drying polyester lining, shock absorber in the heel area, packed in a polybag

Sole: slip-resistant and profiled PVC outsole, conditionally resistant to Oil, fuel, fat and acids

Colour: green (600)

Sizes: 36 - 48

(600)

(800)



ARKTIS // LINED BOOT

Art. No. 59.018.0

Upper: PVC

Extra: for Ladies and Men, durable boot with warm lining, functional, waterproof collar with lacing, polyester lining, free from cadmium, nickel and plumb

Sole: slip-resistant PVC outsole

Colours: green (600), grey (800)

Sizes: 36 - 48

NATURAL RUBBER

The rubber tree (*Hevea brasiliensis*) originates from the tropical Amazonas. The excellent quality features - **suppleness, resistance and waterproofness** - are due to the features of this natural elastic material of the ALBATROS® rubber boots to a great part. The ability to maintain these features even at low temperatures, make the natural rubber to an effective moisture protection for each season.



WATERPROOF

Protects reliably against water.



INSULATING

Stores and maintains body warmth in the comfort temperature range.

FLEXIBLE

The soft material is flexible even at low temperatures and adapts to the walking motion.

INDIVIDUAL CUSTOMIZABLE

Infinitely adjustable leg width through closure buckle.





red lining inside



ARAGON // NATURAL RUBBER BOOT

Art. No. 57.605.0

Upper: natural rubber

Extra: ideal for hunting, outdoor, fishing and riding, waterproof, neoprene lining of 4 mm thickness, extreme soft, adaptable and flexible, adjustable leg width - up to 10 cm more, thermally insulating (up to -22°C), easier entry in the boots thanks to high quality zipper (about 25 cm) from YKK, packed in single box

Sole: extremely profiled, slip and abrasion resistant, self-cleaning cushioning rubber sole

Colour: brown (400) with red neoprene-lining inside

Sizes: 36 - 48



FOREST ISO // NATURAL RUBBER BOOT

Art. No. 57.553.0

Upper: natural rubber

Extra: ideal for hunting, outdoor, fishing and riding, waterproof, neoprene lining of 5 mm thickness - stores and maintains body warmth, comfort temperature range from -11°C to +15°C, extreme range to -22°C, adjustable leg width - up to 5 cm more, strengthening in the toe area, packed in single box

Sole: oil and acid resistant, self-cleaning, slip-proof natural rubber outsole with „Steel Shank“ strengthening

Colour: green (600)

Sizes: 37 - 47



BERYLL // NATURAL RUBBER BOOT

Art. No. 57.600.0

Upper: natural rubber

Extra: high quality, extremely fast-drying nylon lining, removable anatomically formed footbed, adjustable leg width - up to 5 cm more, height about 30 cm, packed in single box

Sole: extremely profiled, slip and abrasion resistant rubber sole with „Steel Shank“ strengthening

Colour: green (600)

Sizes: 41 - 47



AURORA // LADIES NATURAL RUBBER BOOT

Art. No. 57.603.0

Upper: natural rubber

Extra: stylish boot with a modern croc pattern, adjustable leg width, comfortable cotton lining, removable footbed

Sole: flexible, profiled, slip and abrasion resistant rubber sole with flat heel

Colour: black (200)

Sizes: 36 - 41



TOPAS // LADIES NEOPRENE BOOT

Art. No. 57.555.0

Upper: natural rubber with neoprene bootleg of 5 mm thickness, extreme soft, adaptable and flexible

Extra: ideal for all leisure activities, isolating and waterproof, removable footbed, bootleg can be rolled up, trendsetting print, height about 40 cm

Sole: flexible, profiled, slip and abrasion resistant rubber sole

Colour: black-grey (202)

Sizes: 36 - 42



ONYX // NEOPRENE BOOT

Art. No. 57.554.0

Upper: natural rubber with neoprene of 5,5 mm thickness, extreme soft, adaptable and flexible

Extra: perfect for hunting, outdoor, fishing and riding, isolating and waterproof, removable footbed, upper can be rolled up

Sole: extremely profiled sole with pull off aid and „Steel Shank“ strengthening

Colour: black (200)

Sizes: 37 - 46



„STEEL SHANK“- STRENGTHENING

The arch of the foot is a natural shock absorber. Due to the „STEEL SHANK“ metal reinforcement embedded in the sole, this strongly burdened mid foot-heel region is supported. This stabilization

- reduces muscle fatigue
- hyperextension of tendons is considerably reduced

The foot is able to roll flexibly, is protected from impact during walking and also digging with a spade is much more comfortable.

NEOPRENE®

Neoprene is a foamed material produced from synthetic rubber in which innumerable tiny gas bubbles are evenly distributed. This ensures its outstanding thermal insulation properties. It is stretchy, tear-resistant, resistant against seawater, many chemicals, fungi and bacteria. Neoprene became most famous for the use in cold protection suits in water sports.

Normally both sides of the neoprene are coated with fabric (nylon or lycra) which has a closed surface and is less vulnerable to damage.



**NEW
STYLE**



available from **END SEPTEMBER**



MONSUN MID // NEOPRENE ANKLE BOOT

Art. No. 57.616.0

Upper: high-quality natural rubber

Extra: comfortable ankle boot, with neoprene lining of 5 mm thickness, particularly soft, elastic and adaptable, waterproof and climate controlling, removable footbed, fast and easy to pull-on and pull-off, packed in single boxes

Sole: flexible, profiled, slip and abrasion resistant rubber sole

Colour: olive (615)

Sizes: 36 - 46

148



FLORA BLUE // GARTENCLOG

Art. No. 55.016.0

Upper: high-quality natural rubber

Extra: anatomically shaped, waterproof, removable insole and comfortable cotton lining, fast pull-on and pull-off, packed in single boxes

Sole: slip resistant rubber sole

Colour: blue (300)

Sizes: 36 - 41



FLORA // GARTENCLOG

Art. No. 55.015.0

Upper: high-quality natural rubber

Extra: anatomically shaped, waterproof, removable insole and comfortable cotton lining, fast pull-on and pull-off, packed in single boxes

Sole: slip-resistant rubber sole

Colour: black-grey (202)

Sizes: 36 - 41

**NEW
STYLE**



available from **END SEPTEMBER**



MONSUN LADY // LADIES NEOPRENE GARDEN CLOG

Art. No. 55.023.0

Upper: high-quality natural rubber

Extra: comfortable ladies clog, trendy coloured, with neoprene lining of 5 mm thickness, particularly soft, elastic and adaptable, waterproof and climate controlling, removable footbed, fast and easy to pull-on and pull-off

Sole: flexible, profiled, slip and abrasion resistant rubber sole

Colour: purple (962)

Sizes: 36 - 42

**NEW
LOOK**



(300)

(615)

available from **END SEPTEMBER**



MONSUN // NEOPRENE GARDEN CLOG

Art. No. 55.020.1

Upper: high-quality natural rubber

Extra: neoprene lining of 5 mm thickness, particularly soft, elastic and adaptable, waterproof and climate controlling, removable EVA footbed protects against cold grounds, fast and easy to pull-on and pull-off

Sole: slip-resistant rubber sole

Colours: blue (300), olive (615)

Sizes: 36 - 46



GLOSSARY





TECHNOLOGIES

HIGHTECH-MATERIALS AT WORK



The new, innovative IMPULSE.FOAM® midsole technology reacts to each of your steps with an energy impulse. Thereby the IMPULSE.FOAM® does not only return the energy, but also provides maximum cushioning, excellent stability and long-lasting comfort.

IMPULSE.FOAM® - THE ANTI-FATIGUE TECHNOLOGY!



Our ALBATROS XTS Sole is made out of a special rubber compound. Therefore, it is particularly durable, absorption-active, heat-resistant up to 300°C (HRO) and slip-resistant (SRC).

The differently formed and especially arranged profile elements offer support and surefootedness on every ground and have self-cleaning properties. Furthermore, the sole is oil and fuel resistant as well as antistatic.



Innovative designs, high functionality and a low weight - with FITFRAME® no problem. Seamlessly welded reinforcements combined with breathable textiles ensure maximum breathability and comfort. There is a high flexibility, as there are no seams in flex areas. Furthermore, FITFRAME® means high resistance, an adaptable, perfect fit, more stability and support. The small weight also offers a delightful wearing comfort.

CORDURA®

The high-performance, super-durable fabric is extremely long-lasting with a high wearing comfort. The permanent dimensionally stable fabric is water and dirt repellent. Furthermore, it reinforces the high strained areas of footwear and clothing.

CORDURA® is a hightech fabric, made of particularly abrasion resistant nylon.



The long lasting, water-repellent and wind-resistant hightech membrane is particularly breathable and protects the foot with a microporous mesh structure against waterlogging. It transports sweat and moisture to the outside. What remains is a delightful dry and comfortable body sensation.

ELASTOPAN®

ELASTOPAN® is an innovative, light-weight, multiple-components polyurethane-(foam) system by BASF® with high cushioning properties, slip and abrasion resistance. It guarantees a maximum of safety and comfort to the wearer.



The Thinsulate fibers are thinner than usual polyester fibers, so they offer a high level of heat insulation, while sweat and moisture will be transported to the outside. Therefore the body will be kept warm and dry during cold days.



GORE-TEX®

GORE-TEX® is particularly strong and efficient.

The wind- and waterproof membrane keeps the foot dry and offers a pleasant wearing comfort. It provides an optimal foot climate at high breathability.



MULTISHIELD

The special tanning process used for this leather, combines successfully the natural beauty and suppleness of leather with the high performance and durability requirements of the most demanding conditions. Multishield leather, when properly cared for, provides farmyard resistance, resistance to automotive fluids, dilute acids, alkalis, flames and mould. It is also breathable and water-resistant.

BASF® PU

When selecting the materials for our ALBATROS® articles, we attach a certain importance on quality and sustainability. Therefore, we use high-quality polyurethane by BASF® for our shoes and boots.



FAP® is a non-metallic material, especially for safety footwear, made of multiple textile layers of extremely tearproof fibers. The FAP® midsole offers greater comfort, flexibility, cold insulation, humidity absorption and shock absorption to the wearer.

INSOLES

THE PLUS IN COMFORT



COMFIT FOOTBED

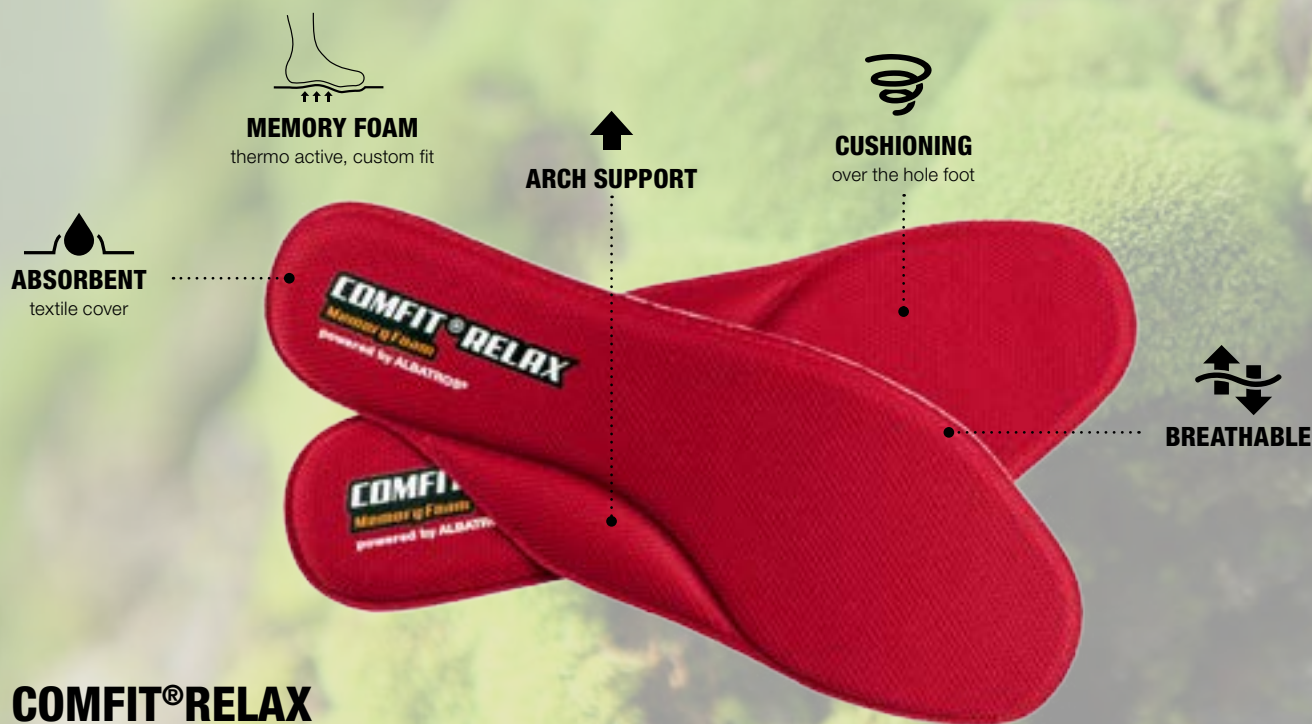
This footbed ensures a pleasant and comfortable foot sensation. A dimensionally stable and breathable material of light PU foam combined with an abrasion resistant Mesh cover absorbs moisture and guarantees optimal cushioning to relieve ligaments and joints. The anatomical form and the arch support ensure perfect fit at the feet. Washable at 30°C.



COMFIT® AIR FOOTBED

The extra comfort in your safety footwear. The newly-developed, breathable ALBATROS® comfit® AIR footbed has elevations in the heel and ball area of the foot as well as a support of the longitudinal arch. This helps the foot keeping its natural position in the shoe and stimulates the musculature while walking. The slip-resistant textile cover is odour-resistant, moisture absorbing and washable at 30°C.

154



COMFIT® RELAX MEMORY FOAM FOOTBED

The thermo-foam of the COMFIT® RELAX footbed adapts individually to your foot due to its reaction to body heat. It offers an optimal pressure distribution over the whole foot. The foot is relieved and gets more support. After taking off the shoes, the footbed returns to its original shape (memory effect). The used textile cover is durable, absorbent, washable up to 30°C (hand wash) and quick drying. Perfect for long working days.

DGUV 112-191

ORTHOPAEDIC INSOLES



In our ALBATROS collection, different models can be found which are certified according to DGUV 112-191 for the most common necessary orthopaedic measures and meet the requirements of DIN EN ISO 20345.

An authorized orthopedic shoemaker or a health care supply store can adapt these safety shoes easily to the individual situation of the wearer – without any loss of the protection function.

The orthopaedic shoemaker/ the health care supply store can find the orthopaedic tools for the finish at our partners

Matthias Hartmann Orthopädie + Sport GmbH and **Bauerfeind AG**.

For more information, please refer to www.albatros-world.de.



ERGOPAD WORK:X



1 COVER/TOP LAYER

- high electrical conductivity, ESD suitable
- soft top layer

2 DILATOR

- arch support

3 FLEXIBLE INSERT CORE

- support during the torsional moment
- lengthwise arch support

4 BOTTOM LAYER

- slip-resistant contact surface
- conductive EVA



ERGOPAD WORK:H



1 COVER/TOP LAYER

- high electrical conductivity, ESD suitable
- soft top layer

2 DILATOR

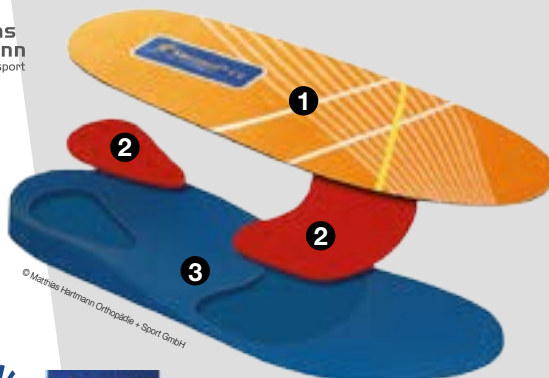
- arch support

3 PLASTIC CORE

- additional cushioning
- discharge of the sores tendons

4 BOTTOM LAYER

- slip-resistant contact surface
- conductive EVA



1 PADDING SOLE

- high electrical conductivity, ESD suitable
- high wearing comfort
- abrasion-resistant

2 STOßABSORBER

- reducing force of collision
- permanently elastic
- pressure distributing

3 INSOLE ELEMENT

- high electrical conductivity
- pressure distributing

certified styles at Hartmann: Sport XTS, Freestyle SR.

certified styles at Bauerfeind: Sport XTS, Freestyle SR, Ladies Line.

SYMBOL OVERVIEW



All year articles

This article can be worn in summer and winter. In the textile range some articles are true masters of transformation and can be worn as a light jacket as well as a waistcoat due to the detachable, soft lining.



Breathable

Thanks to special upper fabrics, like e.g. Softshell or processing, the article is breathable.



Windproof

Thanks to special upper fabrics, like e.g. PU-Coating or processing, the article is windproof.



Windresistant

Thanks to special upper fabrics, like e.g. Softshell or processing, the article is wind-resistant



Waterresistant

Thanks to special upper fabrics, like e.g. Softshell or processing, the article is water-resistant.



Waterproof

Thanks to special upper fabrics, like e.g. PU-Coating or processing the article is waterproof.



For ladies only

A more fitted shape and stylish details make these articles to the perfect companion for every woman.



Removable sleeves

Removable sleeves, thus wearable as a vest as well.



Vegan

The article was manufactured without using any animal products.



Reversible

The clou - two garments in one. Due to different upper materials and colours you get a new look or even a new function (signal-orange).



Mobile pocket

Special mobile pocket inside or outside.



Two-way zipper

Practical variety of a zipper. Due to the two zipper puller the zipper can be opened and closed from both sides.



Easy to embroider

Due to a zipper in the lining a print or embroidery can easily be added subsequently to the back.



King Size

Also for big guys. From size 4XL an article is allowed to be characterized with this icon.



Hood

Equipped with a hood. Contentially removable or hidden inside the collar. Please find more information in the article description.



Cool Dry Finish

Thanks to the Cool-Dry finish, moisture is quickly transported away from the body and ensures a pleasant wearing comfort. The shirt dries quickly, is breathable and thus perfect for all activities.



Cold-isolating / CI

This article keeps you warm in cold temperatures.



Metal free

Non-metallic footwear. It is light, and metal detectors do not react to it.

SAFETY STANDARDS

EN ISO 20345:2011 Safety footwear with toe caps tested for protection against 200 Joules impact and 15.000 Newton compression.



Basic requirements e.g. concerning tear strength and water-repellent properties of the upper as well as substance, tear strength, abrasion resistance, resistance to flex cracking and oil resistance of the outsole. Can be with open seat region (Safety Basic - SB)

EN ISO 20347:2012 Safety shoes without toe cap protection.



Basic requirements e.g. concerning tear strength and water-repellent properties of the upper as well as substance, tear strength, abrasion resistance, resistance to flex cracking the outsole. Can be with open seat region. (Occupational Basic - OB)

SAFETY SHOES (Classification I, shoes made of leather and other materials)

Appropriate for use in **dry areas**:



Safety class S1

Additionally to the basic requirements closed heel area, antistatic, energy absorption of the heel area, fuel and oil-resistant outsole.



Safety class S1P

as S1, additionally with penetration resistant midsole.

Appropriate for use in **wet areas**:



Safety class S2

as S1, additionally with water-repellent properties of the upper.



Safety class S3

as S2, additionally with penetration resistant midsole and cleated outsole.

SAFETY BOOTS (Classification II, shoes made of full rubber or polymer shoes)



Safety class S4

Additionally to the basic requirements antistatic, energy absorption of the heel area.



Safety class S5

as S4, additionally with penetration resistant midsole and cleated outsole.

OCCUPATIONAL SHOES

Appropriate for use in **dry areas**:



Safety class O1

Additionally to the basic requirements closed heel area, antistatic, energy absorption of the heel area.



Safety class O2

as O1, additionally with waterrepellent characteristics.



Steel toe cap:

Protects the toes against compression through falling objects.



Composite cap:

Non-metallic and lighter than common steel toe caps. Furthermore, stainless, antimagnetic and thermally insulating.



Fiberglass cap:

Highly resistant toe cap of fiberglass-reinforced synthetic material. Excellent corrosion behaviour, good electrical and thermal insulation effect and anti-magnetic.



Steel midsole:

The steel midsole prevents sharp objects from penetrating through the sole.



Heat resistance up to 300°C

The outsole is resistant against contact heat up to 300°C.



Certified according to DGVU 112-191

These shoes may be fitted with orthotics of certified orthopedic surgeon and medical supply companies.



Slip resistance cat. SRA

Meets the requirements when footwear is tested on a clay tile surface which has been lubricated with a wetting agent. (Sodium Laurel Sulphate).



Slip resistance cat. SRB

Meets the requirement when footwear is tested on a stainless steel surface which has been lubricated with oil. (Glycerol).



Slip resistance cat. SRC

Meets both SRA and SRB requirements.



FAP - Flexible Anti-Penetration

FAP® is a non-metallic material for safety footwear made of multiple textile layers of extremely tearproof fibers. The FAP® midsole offers greater comfort, flexibility, cold insulation, humidity absorption and shock absorption to the wearer.



ESD

ESD shoes are indispensable as they prevent electrostatic charging. They serve to protect from electrostatic discharge, which can e.g. damage or destroy electronic components.

SIZE CHARTS

REGULAR SIZES (dimension specifications in cm)

Order size	XS / 46	S / 48	M / 50	L / 52	XL / 54	2XL / 56	3XL / 58	4XL / 60
Body height	168 - 173	171 - 176	174 - 179	177 - 182	180 - 184	182 - 186	184 - 188	185 - 189
Chest measurement	90 - 93	94 - 97	98 - 101	102 - 105	106 - 109	110 - 113	114 - 117	118 - 121
Waistband width	78 - 81	82 - 85	86 - 89	90 - 94	95 - 99	100 - 104	105 - 109	110 - 114
Side length	102 - 104	103 - 106	105 - 108	107 - 109	108 - 110	109 - 112	111 - 114	112 - 115

Order size	5XL / 62	6XL / 64	7XL / 66
Body height	187 - 191	189 - 193	191 - 194
Chest measurement	122 - 125	126 - 129	130 - 133
Waistband width	115 - 119	120 - 124	125 - 129
Side length	114 - 116	115 - 117	116 - 118

SLIM SIZES (dimension specifications in cm)

Order size	94	98	102	106	110	114
Body height	180 - 184	182 - 186	184 - 188	187 - 191	190 - 194	193 - 197
Chest measurement	91 - 94	95 - 98	99 - 102	103 - 106	107 - 110	111 - 114
Waistband width	78 - 81	82 - 85	86 - 89	90 - 94	95 - 99	100 - 104
Side length	108 - 110	109 - 112	111 - 113	112 - 115	114 - 116	115 - 117

STOCKY SIZES (dimension specifications in cm)

Order size	23	24	25	26	27	28	29
Body height	163 - 167	166 - 170	169 - 173	172 - 176	175 - 178	177 - 180	179 - 182
Chest measurement	90 - 93	94 - 97	98 - 101	102 - 105	106 - 109	110 - 113	114 - 117
Waistband width	82 - 85	86 - 89	90 - 93	94 - 97	98 - 101	102 - 107	108 - 111
Side length	97 - 100	99 - 102	101 - 104	103 - 105	104 - 107	105 - 108	107 - 110

Order size	30	31	32
Body height	181 - 183	182 - 184	183 - 185
Chest measurement	118 - 121	122 - 125	126 - 129
Waistband width	112 - 116	116 - 119	120 - 123
Side length	108 - 111	110 - 112	111 - 113

CONVERSION SHIRTS

Standart size	44 / 46	48 / 50	52 / 54	56 / 58	60	62	64	66
Shirt size	37 / 38	39 / 40	41 / 42	43 / 44	45 / 46	47 / 48	49 / 50	51 / 52

CONVERSION JEANS

German sizes	46	48	50	52	54	56	58	60	23	24	25	26	27	28	29
Waist sizes / Inch	32	33	34	36	38	40	42	44	33	34	36	38	40	42	44
Inside leg measurement / Inch	32	32	32	34	34	34	34	34	30	30	32	32	32	32	32

German sizes	94	98	102	106	110	114
Waist sizes / Inch	32	33	34	36	38	40
Inside leg measurement / Inch	34	34	36	36	36	36

CONVERSION UNDERWEAR

Order size	S	M	L	XL	XXL
Underwear size	5	6	7	8	9

SHOE SIZE

German sizes	18	19	20	21	22	23	24	25	26	27	28
Foot lengths up to ... cm	11	11,3	12,3	13	13,7	14,4	15	15,6	16,3	17	17,7

German sizes	29	30	31	32	33	34	35	36	37	38	39
Foot lengths up to ... cm	18,4	19	19,7	20,4	21	21,7	22,3	23	23,6/24	24,3	24,6/25

German sizes	40	41	42	43	44	45	46	47
Foot lengths up to ... cm	25,7	26/26,4	27	27,4/27,7	28,4	28,7/29	29,7	30/30,3

SHOE SIZE MEN

German sizes	38	38 ^{2/3}	39 ^{1/3}	40	40 ^{2/3}	41 ^{1/3}	42	42 ^{2/3}	43 ^{1/3}	44	44 ^{2/3}	45 ^{1/3}	46	46 ^{2/3}
English sizes	5	5,5	6	6,5	7	7,5	8	8,5	9	9,5	10	10,5	11	11,5

German sizes	47 ^{1/3}	48	48 ^{2/3}	49 ^{1/3}	50
English sizes	12	12,5	13	13,5	14

SHOE SIZE WOMEN

German Sizes	34	34 ^{2/3}	35 ^{1/3}	36	36 ^{2/3}	37 ^{1/3}	38
English sizes	2	2,5	3	3,5	4	4,5	5

German Sizes	38 ^{2/3}	39 ^{1/3}	40	40 ^{2/3}	41 ^{1/3}	42
English sizes	5,5	6	6,5	7	7,5	8

BELT LENGTHS

Regular sizes	46	48	50	52	54	56	58	60	62	64
Slim sizes	94	98	102	106	110	114				
Stocky sizes		23	24	25	26	27	28	29	30	
Inch sizes	32	33	34	36	38	40				
Order length	80	85	90	95	100	105	110	115	120	125

- 1 Body height
- 2 Chest measurement
- 3 Waistband width
- 4 Side length



INDEX NUMERICAL

204700	COMFIT FOOTBED.....	92
209050	POLISH & CARE.....	140
231050	PADDOCK.....	68
240300	COTTON TRIO.....	70
240310	SAFE & SOFT.....	71
240360	CONTROL TRIO.....	70
240370	TEMPO DUO.....	71
240380	WORK ESD.....	71
240800	THERMO CONTROL SH.....	70
240900	THERMO CONTROL LG.....	70
240920	NORWEGER SH.....	71
240930	ARCTIC WOOL.....	71
241400	GUARD.....	71
250610	COLDLOCK.....	65
250630	SENSOR.....	65
250650	SENSITIVE.....	65
254140	SONIC.....	68
254160	ACTIVATE.....	68
254240	DYNAMIC.....	68
254710	COLDLOCK CAP.....	67
254720	COLDLOCK MULTI.....	69
254730	COLDLOCK BAND.....	69
254740	COLDLOCK SCHAL.....	69
255050	TRILBY.....	69
255170	FROSTGUARD.....	66
255180	COLDGUARD.....	66
255190	WINTER PRO.....	67
255200	FREEZE PROTECT.....	66
255210	ISO PRO.....	67
255220	FREEZEGUARD.....	66
255230	ICEGUARD.....	66
255300	HARVESTER.....	69
257920	BOGART.....	69
260110	FITTER.....	28
260180	OMEGA.....	29
260190	DELTA.....	28
262731	POLAR.....	22
263210	HUNTER.....	30
263230	GREENWOOD.....	31
263330	FOREST.....	31
263600	RANGER.....	23
263710	KEPLER Softshell Jacket.....	17
263920	KEPLER Fleece/Sweat-wendejacke.....	24
264010	ELECTRA.....	24
264050	WRIGHT.....	24
264060	HAWKING.....	15
264090	GEMINI.....	24
264210	MISSION.....	29
264220	HEYERDAHL.....	17
264240	SCOUT.....	29
264260	VECTOR.....	23
264270	PIONEER.....	24
264290	POLARIS.....	22
264350	ALLROUND GREEN Softshell Jacket.....	17, 47
264370	ARMSTRONG.....	20
264380	LINDBERGH.....	15
264390	FREESTYLE SR Fleece Jacket.....	22, 51
264430	MERCURY.....	23
264460	MAXWELL.....	59
264520	ASCARI FTX.....	57
264550	ALDRIN.....	20
264570	EXPLORER BRN.....	21
264590	STIRLING.....	19
264600	COWPER.....	19
264610	DARBY.....	19
264630	AVERY.....	16
264650	DUKE.....	18
269470	THERMOGETIC LA.....	64
269480	THERMOGETIC TRS.....	64
270430	FREESTYLE SR Jacke.....	10, 51
270450	NEWTON.....	8
270700	IMPULS.....	8
270920	CELSIUS.....	8
270930	AMPERE.....	9
270990	GRAY.....	10

272000	ALLROUNDER.....	12
272060	LUX.....	35
274450	FAHRENHEIT LATZHOSE.....	59
274460	FAHRENHEIT TRS.....	59
274490	FAHRENHEIT JKT.....	59
274500	FORECAST JKT.....	57
274520	FORECAST TRS.....	57
274530	FAHRENHEIT OVERALL.....	59
274540	FORECAST LATZHOSE.....	61
274630	TWISTER TRS.....	58
274730	FREEZE JKT.....	58
274750	DELISLE.....	11
274760	PASCAL.....	11
274770	CLIMATE JKT.....	57
274780	CLIMATE TRS.....	57
274810	BLIZZARD JKT.....	58
274820	BLIZZARD TRS.....	58
274850	ATMOSPHERE.....	11, 56
275430	SUEPRCELL.....	60
275440	CYCLONE.....	60
279310	EDISON.....	26
279720	AMUNDSEN.....	27
279750	HERTZ.....	26
279830	COLUMBUS.....	27
279840	TESLA.....	27
279850	NOBEL.....	26
279870	ALLROUND BLACK Weste.....	49
279910	ALLROUND GREEN Weste.....	47
279920	FREESTYLE SR Worker-Weste.....	25, 51
279950	DRIZZLE.....	61
279960	VOLTA.....	25
280960	MULTIMETER.....	39
280980	MULTITASK.....	39
281010	MADOC TRS.....	38
283650	PROFI LINE Bundjacke.....	45
284710	APRON.....	61
286240	ALLROUND GREEN Shorts.....	47
286250	ALLROUND BLACK Jacke 2 in 1.....	49
286260	ALLROUND BLACK Latzhose.....	48
286270	ALLROUND BLACK Bundhose.....	49
286280	ALLROUND BLACK Shorts.....	49
286290	ALLROUND GREEN Bundhose.....	47
286300	ALLROUND GREEN Latzhose.....	46
286310	FREESTYLE SR 7/8 Berufshose.....	51
286320	FREESTYLE SR Bundhose.....	50
286340	PROFI LINE Blousonjacke.....	9, 45
286360	PROFI LINE Bundhose.....	45
286370	PROFI LINE Latzhose.....	44
286380	PROFI LINE Shorts.....	45
290200	COPPER.....	36
290300	COPPER LG.....	36
290400	BRONZE 1/2.....	37
290500	BRONZE 1/1.....	37
292030	SOLID.....	35
292060	CONSTRUCTION.....	35
292080	WIRE.....	35
292100	TILER.....	34
297810	COOLER.....	33
297910	SELECT.....	33
297950	REFRESH.....	33
297960	CLASSIC.....	32
297970	ELEMENT.....	32
521840	SMARAGD.....	143
536010	JUWEL.....	143
550150	FLORA.....	148
550160	FLORA BLUE.....	148
550201	MONSUN.....	149
550230	MONSUN LADY.....	149
564010	GUARDIAN HIGH GREEN.....	142
564020	GUARDIAN MID GREEN.....	142
564030	GUARDIAN HIGH BLACK.....	142
564040	GUARDIAN MID BLACK.....	142
575450	LUMBERJACK.....	140
575530	FOREST ISO.....	145
575540	ONYX.....	146

575550	TOPAS	146
576000	BERYLL	145
576030	AURORA	146
576050	ARAGON	145
576160	MONSUN MID	148
590250	PROTECTOR	140
590320	RIVER	61
590880	TITAN	141
593080	THE RANCHER	143
631080	GRAVITATION MID	105
631120	GRAVITY CTX MID	105
631150	BLUETECH MID	98
631320	ENDURANCE MID	102
631330	GRAVEL MID	113
631340	TIMBER MID	113
631500	RIGGER BOOT	109
631650	FUNCTION MID	101
631670	HIKER XTS MID	87
631681	MOTION XTS MID	89
631690	RUNNER XTS MID	88
631700	ROCKY MID	112
631750	X-TREME CTX MID	107
631861	UNIT MID	102
636550	VIGGOR IMPULSE MID	84
641080	GRAVITATION LOW	105
641100	BLUETCH LOW	98
641110	BLUETCH AIR LOW	98
641330	TIMBER LOW	112
641340	GRAVEL LOW	113
641350	ENDURANCE LOW	102
641390	SILVER RACER XTS LOW	87
641401	RED RACER XTS LOW	87
641441	MOTION XTS LOW	89
641460	RUNNER XTS LOW	88
641550	MARATHON XTS LOW	89
641560	CROSSOVER XTS LOW	88
641600	ROCKY LOW	113
641700	FUNCTION LOW	101
641710	ENERGY LOW	101
641950	FREESTYLE BLUE LOW	92
641960	FREESTYLE BLACK LOW	92
645200	TWIST PINK WNS LOW	80
645210	TWIST RED WNS LOW	80
645220	JAZZ WNS LOW	80
645230	SWING WNS LOW	80
646100	BUSINESS CSL LOW	95
646120	SMART CSL LOW	95
646140	SPORT CSL LOW	95
646500	VIGOR IMPULSE LOW	84
646600	LIFT RED IMPULSE LOW	83
646610	LIFT BLUE IMPULSE LOW	83
646620	ENERGY IMPULSE LOW	83
652360	CHAMONIX LOW	134
652500	SENSA BLUE CTX WNS LOW	123
652510	ACADIA CTX WNS LOW	123
654410	VANTAGE CTX LOW	126
654450	ELITE BLUE LOW	125
654500	TRAILBLAZER LOW	126
654510	TRAVELLER LOW	127
654570	VOYAGER GREEN LOW	126
654580	VOYAGER BLUE LOW	125
657531	CHALLENGER CTX LOW	127
658600	LOFOTEN CTX LOW	135
658650	EIGER CTX MID	131
659250	LISSABON CTX LOW	134
671670	GLOBETROTTER MID	127
672550	SENSA GREEN CTX WNS MID	123
674700	PATHFINDER CTX MID	127
676440	MONT BLANC CTX MID	131
676750	VOYAGER BLUE MID	125
677480	CARDIAC CTX MID	135
677500	DAVOS CTX MID	131
677520	HIGHLANDS CTX MID	134
677560	VANTAGE CTX MID	126

677580	ISCHGL CTX MID	123
678510	LOFOTEN CTX MID	135

INDEX ALPHABETICAL

652510	ACADIA CTX WNS LOW	123	641710	ENERGY LOW	101
254160	ACTIVATE	68	264570	EXPLORER BRN	21
264550	ALDRIN	20	274490	FAHRENHEIT JKT	59
286270	ALLROUND BLACK Bundhose	49	274450	FAHRENHEIT LATZHOSE	59
286250	ALLROUND BLACK Jacke 2 in 1	49	274530	FAHRENHEIT OVERALL	59
286260	ALLROUND BLACK Latzhose	48	274460	FAHRENHEIT TRS	59
286280	ALLROUND BLACK Shorts	49	550150	FLORA	148
279870	ALLROUND BLACK Weste	49	550160	FLORA BLUE	148
272000	ALLROUNDER	12	274500	FORECAST JKT	57
286290	ALLROUND GREEN Bundhose	47	274540	FORECAST LATZHOSE	61
286300	ALLROUND GREEN Latzhose	46	274520	FORECAST TRS	57
286240	ALLROUND GREEN Shorts	47	263330	FOREST	31
264350	ALLROUND GREEN Softshelljacke	17, 47	575530	FOREST ISO	145
279910	ALLROUND GREEN Weste	47	641960	FREESTYLE BLACK LOW	92
270930	AMPERE	9	641950	FREESTYLE BLUE LOW	92
279720	AMUNDSEN	27	286310	FREESTYLE SR 7/8 Berufshose	51
284710	APRON	61	286320	FREESTYLE SR Bundhose	50
576050	ARAGON	145	264390	FREESTYLE SR Fleecejacke	22, 51
240930	ARCTIC WOOL	71	270430	FREESTYLE SR Jacke	10, 51
264370	ARMSTRONG	20	279920	FREESTYLE SR Worker-Weste	25, 51
264520	ASCARI FTX	57	255220	FREEZEGUARD	66
274850	ATMOSPHERE	11, 56	274730	FREEZE JKT	58
576030	AURORA	146	255200	FREEZE PROTECT	66
264630	AVERY	16	255170	FROSTGUARD	66
576000	BERYLL	145	641700	FUNCTION LOW	101
274820	BLIZZARD TRS	58	631650	FUNCTION MID	101
641110	BLUETCH AIR LOW	98	264090	GEMINI	24
641100	BLUETCH LOW	98	671670	GLOBETROTTER MID	127
631150	BLUETECH MID	98	641340	GRAVEL LOW	113
274810	BLIZZARD JKT	58	631330	GRAVEL MID	113
257920	BOGART	69	641080	GRAVITATION LOW	105
260110	FITTER	28	631080	GRAVITATION MID	105
290500	BRONZE 1/1	37	631120	GRAVITY CTX MID	105
290400	BRONZE 1/2	37	270990	GRAY	10
646100	BUSINESS CSL LOW	95	263230	GREENWOOD	31
677480	CARDIAC CTX MID	135	241400	GUARD	71
270920	CELSIUS	8	564030	GUARDIAN HIGH BLACK	142
657531	CHALLENGER CTX LOW	127	564010	GUARDIAN HIGH GREEN	142
652360	CHAMONIX LOW	134	564040	GUARDIAN MID BLACK	142
297960	CLASSIC	32	564020	GUARDIAN MID GREEN	142
274770	CLIMATE JKT	57	255300	HARVESTER	69
274780	CLIMATE TRS	57	264060	HAWKING	15
255180	COLDGUARD	66	279750	HERTZ	26
250610	COLDLOCK	65	264220	HEYERDAHL	17
254730	COLDLOCK BAND	69	677520	HIGHLANDS CTX MID	134
254710	COLDLOCK CAP	67	631670	HIKER XTS MID	87
254720	COLDLOCK MULTI	69	263210	HUNTER	30
254740	COLDLOCK SCHAL	69	255230	ICEGUARD	66
279830	COLUMBUS	27	270700	IMPULS	8
204700	COMFIT FOOTBED	92	677580	ISCHGL CTX MID	123
292060	CONSTRUCTION	35	255210	ISO PRO	67
240360	CONTROL TRIO	70	645220	JAZZ WNS LOW	80
297810	COOLER	33	536010	JUWEL	143
290200	COPPER	36	263710	KEPLER Softshelljacke	17
290300	COPPER LG	36	263920	KEPLER Fleece/Sweat-wendejacke	24
240300	COTTON TRIO	70	646610	LIFT BLUE IMPULSE LOW	83
264600	COWPER	19	646600	LIFT RED IMPULSE LOW	83
641560	CROSSOVER XTS LOW	88	264380	LINDBERGH	15
275440	CYCLONE	60	659250	LISSABON CTX LOW	134
264610	DARBY	19	658600	LOFOTEN CTX LOW	135
677500	DAVOS CTX MID	131	678510	LOFOTEN CTX MID	135
274750	DELISLE	11	575450	LUMBERJACK	140
260190	DELTA	28	272060	LUX	35
279950	DRIZZLE	61	281010	MADOC TRS	38
264650	DUKE	18	641550	MARATHON XTS LOW	89
254240	DYNAMIC	68	264460	MAXWELL	59
279310	EDISON	26	264430	MERCURY	23
658650	EIGER CTX MID	131	264210	MISSION	29
264010	ELECTRA	24	550201	MONSUN	149
297970	ELEMENT	32	550230	MONSUN LADY	149
654450	ELITE BLUE LOW	125	576160	MONSUN MID	148
641350	ENDURANCE LOW	102	676440	MONT BLANC CTX MID	131
631320	ENDURANCE MID	102	641441	MOTION XTS LOW	89
646620	ENERGY IMPULSE LOW	83			

631681	MOTION XTS MID.....	89
280960	MULTIMETER	39
280980	MULTITASK.....	39
270450	NEWTON.....	8
279850	NOBEL	26
240920	NORWEGER SH.....	71
260180	OMEGA	29
575540	ONYX.....	146
231050	PADDOCK	68
274760	PASCAL.....	11
674700	PATHFINDER CTX MID	127
264270	PIONEER.....	24
262731	POLAR	22
264290	POLARIS	22
209050	POLISH & CARE	140
286340	PROFI LINE Blousonjacke.....	9, 45
286360	PROFI LINE Bundhose.....	45
283650	PROFI LINE Bundjacke	45
286370	PROFI LINE Latzhose	44
286380	PROFI LINE Shorts	45
590250	PROTECTOR.....	140
263600	RANGER.....	23
641401	RED RACER XTS LOW	87
297950	REFRESH	33
631500	RIGGER BOOT	109
590320	RIVER	61
641600	ROCKY LOW	113
631700	ROCKY MID.....	112
641460	RUNNER XTS LOW	88
631690	RUNNER XTS MID	88
240310	SAFE & SOFT	71
264240	SCOUT	29
297910	SELECT	33
652500	SENSA BLUE CTX WNS LOW	123
672550	SENSA GREEN CTX WNS MID.....	123
250650	SENSITIVE	65
250630	SENSOR.....	65
641390	SILVER RACER XTS LOW.....	87
521840	SMARAGD.....	143
646120	SMART CSL LOW	95
292030	SOLID	35
254140	SONIC	68
646140	SPORT CSL LOW	95
264590	STIRLING.....	19
275430	SUEPRCELL	60
645230	SWING WNS LOW.....	80
240370	TEMPO DUO	71
279840	TESLA	27
593080	THE RANCHER.....	143
240900	THERMO CONTROL LG.....	70
240800	THERMO CONTROL SH.....	70
269470	THERMOGETIC LA.....	64
269480	THERMOGETIC TRS	64
292100	TILER.....	34
641330	TIMBER LOW	112
631340	TIMBER MID	113
590880	TITAN.....	141
575550	TOPAS.....	146
654500	TRAILBLAZER LOW.....	126
654510	TRAVELLER LOW	127
255050	TRILBY	69
274630	TWISTER TRS	58
645200	TWIST PINK WNS LOW	80
645210	TWIST RED WNS LOW.....	80
631861	UNIT MID.....	102
654410	VANTAGE CTX LOW	126
677560	VANTAGE CTX MID.....	126
264260	VECTOR	23
636550	VIGGOR IMPULSE MID.....	84
646500	VIGOR IMPULSE LOW.....	84
279960	VOLTA.....	25
654580	VOYAGER BLUE LOW	125
676750	VOYAGER BLUE MID.....	125

654570	VOYAGER GREEN LOW	126
255190	WINTER PRO.....	67
292080	WIRE	35
240380	WORK ESD	71
264050	WRIGHT	24
631750	X-TREME CTX MID	107



